

GEAR MOTOR

(CORELESS)

コアレスモータ
Coreless Motor

φ8~24mm

遊星ギヤヘッド
Planetary Gearhead

φ8~22mm

スパーギヤヘッド
Spur Gearhead

φ12~16mm
36×66mm

ギヤードモータ
(コアレス)

φ8ギヤードモータ Gear Motor

コアレスモータ Coreless Motor

索引 INDEX

選定 Selection Guide

技術情報 Technical Information

コアレスモータ Coreless Motor

ブラシレスモータ Brushless Motor

マグネット気磁気 Encoder

光学 Encoder

Planetary Gearhead

Spur Gearhead

スパー Gearhead

Planetary Gearhead

Spur Gearhead

スパー Gearhead

Coreless Gear Motor

Coreless Gear Motor

Iron Core Gear Motor

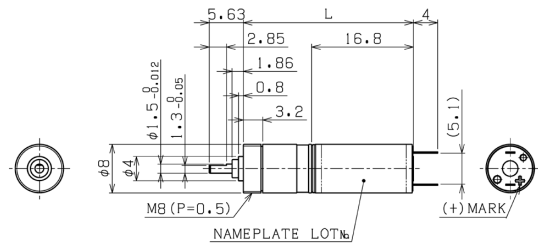
Iron Core Gear Motor

Brushless Gear Motor

Brushless Gear Motor

コアレスモータ Coreless Motor **SCR8-17 × ×** page38

遊星ギヤヘッド Planetary Gearhead **IG-8** page64



| IG-8GM-SRK1701A-03 | | DC3V | | 起動電流 Starting current 578mA | | | | | |
|------------------------------|---|--|-----------------------|-----------------------------|-------|----------------------------------|--------------------|-----------------------------------|--|
| 減速比 Reduction Ratio (1/i) | 無負荷 回転数 No-Load Speed min ⁻¹ | 定格 回転数 Rated Speed min ⁻¹ | 定格トルク Rated Torque | | | 起動 トルク Starting Torque mNm | 長さ(L) Length mm | 回転 方向 Direction of rotation | |
| | | | mNm | kg·cm | oz·in | | | | |
| 4 | 3830 | 3270 | 0.49 | 0.005 | 0.07 | (3.35) | 25.6 | CW | |
| 16 | 958 | 835 | 1.47 | 0.015 | 0.21 | (11.4) | 28.1 | CW | |
| 64 | 239 | 204 | 5.88 | 0.06 | 0.83 | (40.2) | 30.7 | CW | |
| 256 | 59.9 | 51.4 | 19.6 | 0.20 | 2.78 | (138) | 33.2 | CW | |
| 1024 | 15.0 | 12.7 | 73.5 | 0.75 | 10.4 | (479) | 35.8 | CW | |

| IG-8GM-SRK1702A-06 | | DC6V | | 起動電流 Starting current 213mA | | | | | |
|------------------------------|---|--|-----------------------|-----------------------------|-------|----------------------------------|--------------------|-----------------------------------|--|
| 減速比 Reduction Ratio (1/i) | 無負荷 回転数 No-Load Speed min ⁻¹ | 定格 回転数 Rated Speed min ⁻¹ | 定格トルク Rated Torque | | | 起動 トルク Starting Torque mNm | 長さ(L) Length mm | 回転 方向 Direction of rotation | |
| | | | mNm | kg·cm | oz·in | | | | |
| 4 | 3210 | 2640 | 0.49 | 0.005 | 0.07 | (2.76) | 25.6 | CW | |
| 16 | 802 | 679 | 1.47 | 0.015 | 0.21 | (9.58) | 28.1 | CW | |
| 64 | 200 | 165 | 5.88 | 0.06 | 0.83 | (33.6) | 30.7 | CW | |
| 256 | 50.1 | 41.6 | 19.6 | 0.20 | 2.78 | (116) | 33.2 | CW | |
| 1024 | 12.5 | 10.2 | 73.5 | 0.75 | 10.4 | (399) | 35.8 | CW | |

| IG-8GM-SRK1703A-09 | | DC9 V | | 起動電流 Starting current 179mA | | | | | |
|------------------------------|---|--|-----------------------|-----------------------------|-------|----------------------------------|--------------------|-----------------------------------|--|
| 減速比 Reduction Ratio (1/i) | 無負荷 回転数 No-Load Speed min ⁻¹ | 定格 回転数 Rated Speed min ⁻¹ | 定格トルク Rated Torque | | | 起動 トルク Starting Torque mNm | 長さ(L) Length mm | 回転 方向 Direction of rotation | |
| | | | mNm | kg·cm | oz·in | | | | |
| 4 | 3700 | 3110 | 0.49 | 0.005 | 0.07 | (3.07) | 25.6 | CW | |
| 16 | 925 | 797 | 1.47 | 0.015 | 0.21 | (10.6) | 28.1 | CW | |
| 64 | 231 | 194 | 5.88 | 0.06 | 0.83 | (36.7) | 30.7 | CW | |
| 256 | 57.8 | 48.9 | 19.6 | 0.20 | 2.78 | (127) | 33.2 | CW | |
| 1024 | 14.5 | 12.1 | 73.5 | 0.75 | 10.4 | (444) | 35.8 | CW | |

| IG-8GM-SRK1704A-12 | | DC12V | | 起動電流 Starting current 138mA | | | | | |
|------------------------------|---|--|-----------------------|-----------------------------|-------|----------------------------------|--------------------|-----------------------------------|--|
| 減速比 Reduction Ratio (1/i) | 無負荷 回転数 No-Load Speed min ⁻¹ | 定格 回転数 Rated Speed min ⁻¹ | 定格トルク Rated Torque | | | 起動 トルク Starting Torque mNm | 長さ(L) Length mm | 回転 方向 Direction of rotation | |
| | | | mNm | kg·cm | oz·in | | | | |
| 4 | 3820 | 3240 | 0.49 | 0.005 | 0.07 | (3.23) | 25.6 | CW | |
| 16 | 956 | 829 | 1.47 | 0.015 | 0.21 | (11.1) | 28.1 | CW | |
| 64 | 239 | 202 | 5.88 | 0.06 | 0.83 | (38.0) | 30.7 | CW | |
| 256 | 59.8 | 50.9 | 19.6 | 0.20 | 2.78 | (132) | 33.2 | CW | |
| 1024 | 14.9 | 12.5 | 73.5 | 0.75 | 10.4 | (456) | 35.8 | CW | |

標準品 Standard
特注品 Custom-made

1. 上記データは参考値です。
2. 上記スペックは一例で、要望スペックにて承ります。

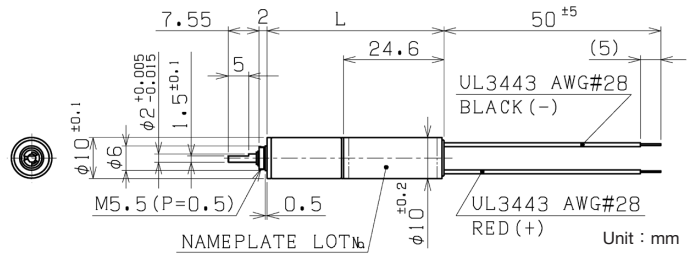
The above data is for reference only.
The above specifications are an example and your specifications are welcomed.

φ 10ギヤードモータ Gear Motor

コアレスモータ Coreless Motor

コアレスモータ Coreless Motor **SCR10-25 × ×** page40

遊星ギヤヘッド Planetary Gearhead **IG-10** page65



| IG-10GM-SRW2501A-03 DC3V | | 起動電流 Starting current 973mA | | | | | | |
|------------------------------|---|--|-----------------------|-------|-------|----------------------------------|--------------------|-----------------------------------|
| 減速比 Reduction Ratio (1/i) | 無負荷 回転数 No-Load Speed min ⁻¹ | 定格 回転数 Rated Speed min ⁻¹ | 定格トルク Rated Torque | | | 起動 トルク Starting Torque mNm | 長さ(L) Length mm | 回転 方向 Direction of rotation |
| | | | mNm | kg·cm | oz·in | | | |
| 16 | 790 | 624 | 4.90 | 0.05 | 0.695 | (23.3) | 37.45 | CW |
| 64 | 198 | 159 | 14.7 | 0.15 | 2.08 | (74.6) | 40.35 | CW |
| 256 | 49.4 | 38.4 | 53.9 | 0.55 | 7.64 | (242) | 43.25 | CW |
| 1024 | 12.3 | 10.1 | 147 | 1.50 | 20.8 | (822) | 46.15 | CW |

| IG-10GM-SRW2502A-03 DC3V | | 起動電流 Starting current 1130mA | | | | | | |
|------------------------------|---|--|-----------------------|-------|-------|----------------------------------|--------------------|-----------------------------------|
| 減速比 Reduction Ratio (1/i) | 無負荷 回転数 No-Load Speed min ⁻¹ | 定格 回転数 Rated Speed min ⁻¹ | 定格トルク Rated Torque | | | 起動 トルク Starting Torque mNm | 長さ(L) Length mm | 回転 方向 Direction of rotation |
| | | | mNm | kg·cm | oz·in | | | |
| 16 | 705 | 592 | 4.41 | 0.045 | 0.625 | (27.5) | 37.45 | CW |
| 64 | 176 | 147 | 14.7 | 0.15 | 2.08 | (89.2) | 40.35 | CW |
| 256 | 44.0 | 36.5 | 49.0 | 0.50 | 6.95 | (287) | 43.25 | CW |
| 1024 | 11.0 | 9.28 | 147 | 1.50 | 20.8 | (940) | 46.15 | CW |

| IG-10GM-SRW2503A-4.5 DC4.5V | | 起動電流 Starting current 1190mA | | | | | | |
|------------------------------|---|--|-----------------------|-------|-------|----------------------------------|--------------------|-----------------------------------|
| 減速比 Reduction Ratio (1/i) | 無負荷 回転数 No-Load Speed min ⁻¹ | 定格 回転数 Rated Speed min ⁻¹ | 定格トルク Rated Torque | | | 起動 トルク Starting Torque mNm | 長さ(L) Length mm | 回転 方向 Direction of rotation |
| | | | mNm | kg·cm | oz·in | | | |
| 16 | 858 | 735 | 5.39 | 0.055 | 0.764 | (37.6) | 37.45 | CW |
| 64 | 214 | 188 | 14.7 | 0.15 | 2.08 | (121) | 40.35 | CW |
| 256 | 53.6 | 46.2 | 53.9 | 0.55 | 7.64 | (390) | 43.25 | CW |
| 1024 | 13.4 | 11.9 | 147 | 1.50 | 20.8 | (1313) | 46.15 | CW |

| IG-10GM-SRW2504A-4.5 DC4.5V | | 起動電流 Starting current 861mA | | | | | | |
|------------------------------|---|--|-----------------------|-------|-------|----------------------------------|--------------------|-----------------------------------|
| 減速比 Reduction Ratio (1/i) | 無負荷 回転数 No-Load Speed min ⁻¹ | 定格 回転数 Rated Speed min ⁻¹ | 定格トルク Rated Torque | | | 起動 トルク Starting Torque mNm | 長さ(L) Length mm | 回転 方向 Direction of rotation |
| | | | mNm | kg·cm | oz·in | | | |
| 16 | 708 | 600 | 4.90 | 0.05 | 0.695 | (32.1) | 37.45 | CW |
| 64 | 177 | 152 | 14.7 | 0.15 | 2.08 | (104) | 40.35 | CW |
| 256 | 44.3 | 37.1 | 53.9 | 0.55 | 7.64 | (332) | 43.25 | CW |
| 1024 | 11.1 | 9.58 | 147 | 1.50 | 20.8 | (1073) | 46.15 | CW |

| IG-10GM-SRW2505A-06 DC6V | | 起動電流 Starting current 641mA | | | | | | |
|------------------------------|---|--|-----------------------|-------|-------|----------------------------------|--------------------|-----------------------------------|
| 減速比 Reduction Ratio (1/i) | 無負荷 回転数 No-Load Speed min ⁻¹ | 定格 回転数 Rated Speed min ⁻¹ | 定格トルク Rated Torque | | | 起動 トルク Starting Torque mNm | 長さ(L) Length mm | 回転 方向 Direction of rotation |
| | | | mNm | kg·cm | oz·in | | | |
| 16 | 721 | 591 | 5.88 | 0.06 | 0.834 | (32.6) | 37.45 | CW |
| 64 | 180 | 146 | 19.6 | 0.20 | 2.78 | (104) | 40.35 | CW |
| 256 | 45.1 | 36.6 | 63.7 | 0.65 | 9.03 | (338) | 43.25 | CW |
| 1024 | 11.3 | 9.76 | 147 | 1.50 | 20.8 | (1079) | 46.15 | CW |

| IG-10GM-SRW2506A-06 DC6V | | 起動電流 Starting current 436mA | | | | | | |
|------------------------------|---|--|-----------------------|-------|-------|----------------------------------|--------------------|-----------------------------------|
| 減速比 Reduction Ratio (1/i) | 無負荷 回転数 No-Load Speed min ⁻¹ | 定格 回転数 Rated Speed min ⁻¹ | 定格トルク Rated Torque | | | 起動 トルク Starting Torque mNm | 長さ(L) Length mm | 回転 方向 Direction of rotation |
| | | | mNm | kg·cm | oz·in | | | |
| 16 | 589 | 480 | 4.90 | 0.05 | 0.695 | (26.5) | 37.45 | CW |
| 64 | 147 | 122 | 14.7 | 0.15 | 2.08 | (86.4) | 40.35 | CW |
| 256 | 36.8 | 29.6 | 53.9 | 0.55 | 7.64 | (275) | 43.25 | CW |
| 1024 | 9.21 | 7.70 | 147 | 1.50 | 20.8 | (897) | 46.15 | CW |

| IG-10GM-SRW2507A-09 DC9V | | 起動電流 Starting current 442mA | | | | | | |
|------------------------------|---|--|-----------------------|-------|-------|----------------------------------|--------------------|-----------------------------------|
| 減速比 Reduction Ratio (1/i) | 無負荷 回転数 No-Load Speed min ⁻¹ | 定格 回転数 Rated Speed min ⁻¹ | 定格トルク Rated Torque | | | 起動 トルク Starting Torque mNm | 長さ(L) Length mm | 回転 方向 Direction of rotation |
| | | | mNm | kg·cm | oz·in | | | |
| 16 | 739 | 604 | 5.88 | 0.06 | 0.834 | (32.2) | 37.45 | CW |
| 64 | 185 | 158 | 14.7 | 0.15 | 2.08 | (101) | 40.35 | CW |
| 256 | 46.2 | 38.1 | 58.8 | 0.60 | 8.34 | (335) | 43.25 | CW |
| 1024 | 11.5 | 9.99 | 147 | 1.50 | 20.8 | (1120) | 46.15 | CW |

| IG-10GM-SRW2509A-12 DC12V | | 起動電流 Starting current 349mA | | | | | | |
|------------------------------|---|--|-----------------------|-------|-------|----------------------------------|--------------------|-----------------------------------|
| 減速比 Reduction Ratio (1/i) | 無負荷 回転数 No-Load Speed min ⁻¹ | 定格 回転数 Rated Speed min ⁻¹ | 定格トルク Rated Torque | | | 起動 トルク Starting Torque mNm | 長さ(L) Length mm | 回転 方向 Direction of rotation |
| | | | mNm | kg·cm | oz·in | | | |
| 16 | 793 | 646 | 5.88 | 0.06 | 0.834 | (31.7) | 37.45 | CW |
| 64 | 198 | 170 | 14.7 | 0.15 | 2.08 | (104) | 40.35 | CW |
| 256 | 49.6 | 40.7 | 58.8 | 0.60 | 8.34 | (328) | 43.25 | CW |
| 1024 | 12.4 | 10.7 | 147 | 1.50 | 20.8 | (1072) | 46.15 | CW |

標準品 Standard

特注品 Custom-made

1. 上記データは参考値です。

2. 上記スペックは一例で、要望スペックにて承ります。

The above data is for reference only.

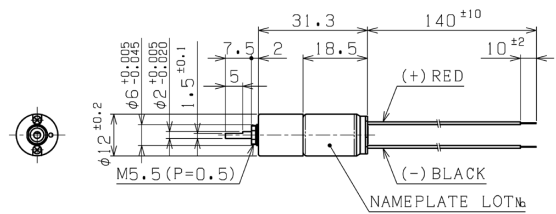
The above specifications are an example and your specifications are welcomed.

φ 12ギヤードモータ Gear Motor

コアレスモータ Coreless Motor

コアレスモータ Coreless Motor **SCR12-18 × ×** page42

スパーギヤヘッド Spur Gearhead **RA-12RB** page66



*THE CABLE LOCATION IS FOR REFERENCE ONLY. Unit : mm

| SCR12BG-1862-03 DC3V | | 起動電流 Starting current 341mA | | | | | | |
|------------------------------|---|--|-----------------------|-------|-------|------------------------------|--------------------|-------------------------------|
| 減速比 Reduction Ratio (1/i) | 無負荷回転数 No-Load Speed min ⁻¹ | 定格回転数 Rated Speed min ⁻¹ | 定格トルク Rated Torque | | | 起動トルク Starting Torque mNm | 長さ(L) Length mm | 回転方向 Direction of rotation |
| | | | mNm | kg·cm | oz·in | | | |
| 7 | 896 | 804 | 0.880 | 0.009 | 0.125 | (8.57) | 31.3 | CW |
| 15 | 431 | 392 | 1.47 | 0.015 | 0.208 | (16.2) | 31.3 | CCW |
| 31 | 216 | 194 | 2.94 | 0.030 | 0.417 | (28.9) | 31.3 | CW |
| 52 | 128 | 114 | 5.39 | 0.055 | 0.764 | (49.3) | 31.3 | CW |
| 71 | 93.2 | 83.1 | 7.35 | 0.075 | 1.04 | (67.8) | 31.3 | CW |
| 100 | 67.0 | 59.9 | 8.83 | 0.09 | 1.25 | (83.3) | 31.3 | CCW |
| 143 | 46.6 | 42.8 | 9.81 | 0.10 | 1.39 | (120) | 31.3 | CCW |
| 208 | 32.1 | 29.4 | 14.7 | 0.15 | 2.08 | (175) | 31.3 | CCW |

| SCR12BG-1801-03 DC3V | | 起動電流 Starting current 386mA | | | | | | |
|------------------------------|---|--|-----------------------|-------|-------|------------------------------|--------------------|-------------------------------|
| 減速比 Reduction Ratio (1/i) | 無負荷回転数 No-Load Speed min ⁻¹ | 定格回転数 Rated Speed min ⁻¹ | 定格トルク Rated Torque | | | 起動トルク Starting Torque mNm | 長さ(L) Length mm | 回転方向 Direction of rotation |
| | | | mNm | kg·cm | oz·in | | | |
| 7 | 1390 | 1170 | 0.980 | 0.010 | 0.139 | (6.19) | 31.3 | CW |
| 15 | 668 | 557 | 1.960 | 0.020 | 0.278 | (11.8) | 31.3 | CCW |
| 31 | 334 | 273 | 3.920 | 0.040 | 0.556 | (21.5) | 31.3 | CW |
| 52 | 199 | 164 | 6.37 | 0.065 | 0.903 | (36.2) | 31.3 | CW |
| 71 | 144 | 117 | 9.32 | 0.095 | 1.32 | (49.7) | 31.3 | CW |
| 100 | 104 | 87.2 | 9.81 | 0.10 | 1.39 | (60.7) | 31.3 | CCW |
| 143 | 72.2 | 60.2 | 14.7 | 0.15 | 2.08 | (88.4) | 31.3 | CCW |
| 208 | 49.8 | 42.2 | 19.6 | 0.20 | 2.78 | (128) | 31.3 | CCW |

| SCR12BG-1804-4.5 DC4.5V | | 起動電流 Starting current 326mA | | | | | | |
|------------------------------|---|--|-----------------------|-------|-------|------------------------------|--------------------|-------------------------------|
| 減速比 Reduction Ratio (1/i) | 無負荷回転数 No-Load Speed min ⁻¹ | 定格回転数 Rated Speed min ⁻¹ | 定格トルク Rated Torque | | | 起動トルク Starting Torque mNm | 長さ(L) Length mm | 回転方向 Direction of rotation |
| | | | mNm | kg·cm | oz·in | | | |
| 7 | 1170 | 988 | 1.47 | 0.015 | 0.208 | (9.45) | 31.3 | CW |
| 15 | 562 | 469 | 2.94 | 0.03 | 0.417 | (17.8) | 31.3 | CCW |
| 31 | 281 | 230 | 5.88 | 0.06 | 0.834 | (32.4) | 31.3 | CW |
| 52 | 167 | 137 | 9.81 | 0.10 | 1.39 | (54.6) | 31.3 | CW |
| 71 | 121 | 106 | 9.81 | 0.10 | 1.39 | (79.1) | 31.3 | CW |
| 100 | 87.2 | 73.5 | 14.7 | 0.15 | 2.08 | (93.6) | 31.3 | CCW |
| 143 | 60.7 | 49.6 | 24.5 | 0.25 | 3.47 | (134) | 31.3 | CCW |
| 208 | 41.9 | 36.6 | 24.5 | 0.25 | 3.47 | (194) | 31.3 | CCW |

| SCR12BG-1807-4.5 DC4.5V | | 起動電流 Starting current 457mA | | | | | | |
|------------------------------|---|--|-----------------------|-------|-------|------------------------------|--------------------|-------------------------------|
| 減速比 Reduction Ratio (1/i) | 無負荷回転数 No-Load Speed min ⁻¹ | 定格回転数 Rated Speed min ⁻¹ | 定格トルク Rated Torque | | | 起動トルク Starting Torque mNm | 長さ(L) Length mm | 回転方向 Direction of rotation |
| | | | mNm | kg·cm | oz·in | | | |
| 7 | 1300 | 1030 | 2.45 | 0.025 | 0.347 | (11.8) | 31.3 | CW |
| 15 | 623 | 486 | 4.90 | 0.05 | 0.695 | (22.3) | 31.3 | CCW |
| 31 | 312 | 243 | 8.83 | 0.09 | 1.25 | (39.9) | 31.3 | CW |
| 52 | 186 | 145 | 14.7 | 0.15 | 2.08 | (66.7) | 31.3 | CW |
| 71 | 135 | 106 | 19.6 | 0.20 | 2.78 | (91.2) | 31.3 | CW |
| 100 | 96.8 | 76.3 | 24.5 | 0.25 | 3.47 | (116) | 31.3 | CCW |
| 143 | 67.4 | 57.5 | 24.5 | 0.25 | 3.47 | (167) | 31.3 | CCW |
| 208 | 46.5 | 41.7 | 24.5 | 0.25 | 3.47 | (237) | 31.3 | CCW |

| SCR12BG-1803-06 DC6V | | 起動電流 Starting current 196mA | | | | | | |
|------------------------------|---|--|-----------------------|-------|-------|------------------------------|--------------------|-------------------------------|
| 減速比 Reduction Ratio (1/i) | 無負荷回転数 No-Load Speed min ⁻¹ | 定格回転数 Rated Speed min ⁻¹ | 定格トルク Rated Torque | | | 起動トルク Starting Torque mNm | 長さ(L) Length mm | 回転方向 Direction of rotation |
| | | | mNm | kg·cm | oz·in | | | |
| 7 | 1200 | 1050 | 0.980 | 0.010 | 0.139 | (7.84) | 31.3 | CW |
| 15 | 578 | 500 | 1.96 | 0.020 | 0.278 | (14.5) | 31.3 | CCW |
| 31 | 289 | 246 | 3.92 | 0.040 | 0.556 | (26.3) | 31.3 | CW |
| 52 | 172 | 147 | 6.37 | 0.065 | 0.903 | (43.8) | 31.3 | CW |
| 71 | 125 | 106 | 9.32 | 0.095 | 1.32 | (61.3) | 31.3 | CW |
| 100 | 89.7 | 78.1 | 9.81 | 0.10 | 1.39 | (75.9) | 31.3 | CCW |
| 143 | 62.4 | 54.0 | 14.7 | 0.15 | 2.08 | (109) | 31.3 | CCW |
| 208 | 43.1 | 37.7 | 19.6 | 0.20 | 2.78 | (156) | 31.3 | CCW |

| SCR12BG-1809-12 DC12V | | 起動電流 Starting current 124mA | | | | | | |
|------------------------------|---|--|-----------------------|-------|-------|------------------------------|--------------------|-------------------------------|
| 減速比 Reduction Ratio (1/i) | 無負荷回転数 No-Load Speed min ⁻¹ | 定格回転数 Rated Speed min ⁻¹ | 定格トルク Rated Torque | | | 起動トルク Starting Torque mNm | 長さ(L) Length mm | 回転方向 Direction of rotation |
| | | | mNm | kg·cm | oz·in | | | |
| 7 | 1130 | 968 | 1.47 | 0.015 | 0.208 | (10.3) | 31.3 | CW |
| 15 | 545 | 475 | 2.45 | 0.025 | 0.347 | (19.1) | 31.3 | CCW |
| 31 | 272 | 234 | 4.90 | 0.050 | 0.695 | (35.1) | 31.3 | CW |
| 52 | 162 | 139 | 8.34 | 0.085 | 1.18 | (58.7) | 31.3 | CW |
| 71 | 118 | 103 | 9.81 | 0.10 | 1.39 | (77.2) | 31.3 | CW |
| 100 | 84.6 | 76.2 | 9.81 | 0.10 | 1.39 | (98.8) | 31.3 | CCW |
| 143 | 58.9 | 50.8 | 19.6 | 0.20 | 2.78 | (143) | 31.3 | CCW |
| 208 | 40.6 | 35.8 | 24.5 | 0.25 | 3.47 | (207) | 31.3 | CCW |

| SCR12BG-1863-12 DC12V | | 起動電流 Starting current 193mA | | | | | | |
|------------------------------|---|--|-----------------------|-------|-------|------------------------------|--------------------|-------------------------------|
| 減速比 Reduction Ratio (1/i) | 無負荷回転数 No-Load Speed min ⁻¹ | 定格回転数 Rated Speed min ⁻¹ | 定格トルク Rated Torque | | | 起動トルク Starting Torque mNm | 長さ(L) Length mm | 回転方向 Direction of rotation |
| | | | mNm | kg·cm | oz·in | | | |
| 7 | 1820 | 1540 | 1.47 | 0.015 | 0.208 | (9.56) | 31.3 | CW |
| 15 | 874 | 755 | 2.45 | 0.025 | 0.347 | (18.0) | 31.3 | CCW |
| 31 | 437 | 371 | 4.90 | 0.050 | 0.695 | (32.4) | 31.3 | CW |
| 52 | 260 | 221 | 8.34 | 0.085 | 1.18 | (55.6) | 31.3 | CW |
| 71 | 189 | 164 | 9.81 | 0.10 | 1.39 | (74.2) | 31.3 | CW |
| 100 | 136 | 122 | 9.81 | 0.10 | 1.39 | (95.3) | 31.3 | CCW |
| 143 | 94.5 | 80.7 | 19.6 | 0.20 | 2.78 | (134) | 31.3 | CCW |
| 208 | 65.1 | 57.0 | 24.5 | 0.25 | 3.47 | (197) | 31.3 | CCW |

| SCR12BG-1815-12 DC12V | | 起動電流 Starting current 225mA | | | | | | |
|------------------------------|---|--|-----------------------|-------|-------|------------------------------|--------------------|-------------------------------|
| 減速比 Reduction Ratio (1/i) | 無負荷回転数 No-Load Speed min ⁻¹ | 定格回転数 Rated Speed min ⁻¹ | 定格トルク Rated Torque | | | 起動トルク Starting Torque mNm | 長さ(L) Length mm | 回転方向 Direction of rotation |
| | | | mNm | kg·cm | oz·in | | | |
| 7 | 2180 | 1830 | 1.47 | 0.015 | 0.208 | (9.16) | 31.3 | CW |
| 15 | 1050 | 900 | 2.45 | 0.025 | 0.347 | (17.2) | 31.3 | CCW |
| 31 | 524 | 442 | 4.90 | 0.050 | 0.695 | (31.3) | 31.3 | CW |
| 52 | 312 | 263 | 8.34 | 0.085 | 1.18 | (53.1) | 31.3 | CW |
| 71 | 226 | 196 | 9.81 | 0.10 | 1.39 | (73.9) | 31.3 | CW |
| 100 | 163 | 145 | 9.81 | 0.10 | 1.39 | (88.8) | 31.3 | CCW |
| 143 | 113 | 96.2 | 19.6 | 0.20 | 2.78 | (132) | 31.3 | CCW |
| 208 | 78.1 | 68.0 | 24.5 | 0.25 | 3.47 | (189) | 31.3 | CCW |

標準品 Standard

特注品 Custom-made

1. 上記データは参考値です。

2. 上記スペックは一例で、要望スペックにて承ります。

The above data is for reference only.

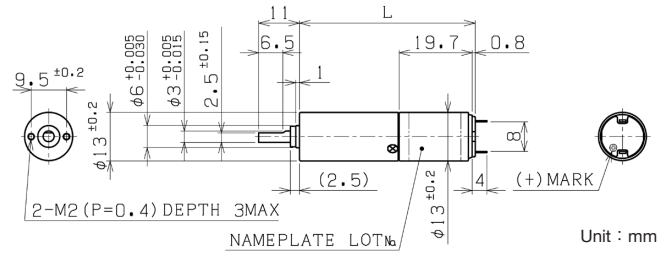
The above specifications are an example and your specifications are welcomed.

φ 13ギヤードモータ Gear Motor

コアレスモータ Coreless Motor

コアレスモータ Coreless Motor **SCR13-20 × ×** page44

遊星ギヤヘッド Planetary Gearhead **IG-13V** page67



| IG-13VM-SRP2007A-03 DC3V 起動電流 Starting current 1150mA | | | | | | | | |
|---|---|--|-----------------------|-------|-------|----------------------------------|--------------------|-----------------------------------|
| 減速比 Reduction Ratio (1/i) | 無負荷 回転数 No-Load Speed min ⁻¹ | 定格 回転数 Rated Speed min ⁻¹ | 定格トルク Rated Torque | | | 起動 トルク Starting Torque mNm | 長さ(L) Length mm | 回転 方向 Direction of rotation |
| | | | mNm | kg·cm | oz·in | | | |
| 16 | 541 | 454 | 6.37 | 0.065 | 0.903 | (39.6) | 39.80 | CW |
| 19 | 466 | 391 | 7.35 | 0.075 | 1.04 | (45.7) | 39.80 | CW |
| 66 | 133 | 115 | 19.6 | 0.20 | 2.78 | (145) | 43.55 | CW |
| 77 | 115 | 98.0 | 24.5 | 0.25 | 3.47 | (166) | 43.55 | CW |
| 90 | 98.8 | 83.9 | 29.4 | 0.3 | 4.17 | (195) | 43.55 | CW |
| 271 | 32.8 | 27.4 | 88.3 | 0.9 | 12.5 | (536) | 47.30 | CW |
| 315 | 28.3 | 23.8 | 98.1 | 1.0 | 13.9 | (617) | 47.30 | CW |
| 366 | 24.3 | 20.3 | 118 | 1.2 | 16.7 | (717) | 47.30 | CW |
| 425 | 20.9 | 17.5 | 137 | 1.4 | 19.4 | (842) | 47.30 | CW |

| IG-13VM-SRP2006A-03 DC3V 起動電流 Starting current 792mA | | | | | | | | |
|--|---|--|-----------------------|-------|-------|----------------------------------|--------------------|-----------------------------------|
| 減速比 Reduction Ratio (1/i) | 無負荷 回転数 No-Load Speed min ⁻¹ | 定格 回転数 Rated Speed min ⁻¹ | 定格トルク Rated Torque | | | 起動 トルク Starting Torque mNm | 長さ(L) Length mm | 回転 方向 Direction of rotation |
| | | | mNm | kg·cm | oz·in | | | |
| 16 | 402 | 331 | 6.37 | 0.065 | 0.903 | (36.1) | 39.80 | CW |
| 19 | 346 | 285 | 7.35 | 0.075 | 1.04 | (41.7) | 39.80 | CW |
| 66 | 99.1 | 84.3 | 19.6 | 0.20 | 2.78 | (131) | 43.55 | CW |
| 77 | 85.3 | 71.6 | 24.5 | 0.25 | 3.47 | (153) | 43.55 | CW |
| 90 | 73.5 | 61.3 | 29.4 | 0.3 | 4.17 | (177) | 43.55 | CW |
| 271 | 24.4 | 20.0 | 88.3 | 0.9 | 12.5 | (490) | 47.30 | CW |
| 315 | 21.0 | 17.3 | 98.1 | 1.0 | 13.9 | (557) | 47.30 | CW |
| 366 | 18.1 | 14.8 | 118 | 1.2 | 16.7 | (647) | 47.30 | CW |
| 425 | 15.6 | 12.8 | 137 | 1.4 | 19.4 | (763) | 47.30 | CW |

| IG-13VM-SRP2005A-06 DC6V 起動電流 Starting current 1240mA | | | | | | | | |
|---|---|--|-----------------------|-------|-------|----------------------------------|--------------------|-----------------------------------|
| 減速比 Reduction Ratio (1/i) | 無負荷 回転数 No-Load Speed min ⁻¹ | 定格 回転数 Rated Speed min ⁻¹ | 定格トルク Rated Torque | | | 起動 トルク Starting Torque mNm | 長さ(L) Length mm | 回転 方向 Direction of rotation |
| | | | mNm | kg·cm | oz·in | | | |
| 16 | 696 | 598 | 9.81 | 0.10 | 1.39 | (69.7) | 39.80 | CW |
| 19 | 599 | 491 | 14.7 | 0.15 | 2.08 | (81.5) | 39.80 | CW |
| 66 | 171 | 142 | 44.1 | 0.45 | 6.25 | (260) | 43.55 | CW |
| 77 | 148 | 121 | 53.9 | 0.55 | 7.64 | (295) | 43.55 | CW |
| 90 | 127 | 104 | 63.7 | 0.65 | 9.03 | (352) | 43.55 | CW |
| 271 | 42.2 | 34.3 | 177 | 1.8 | 25.0 | (945) | 47.30 | CW |
| 315 | 36.4 | 29.5 | 206 | 2.1 | 29.2 | (1087) | 47.30 | CW |
| 366 | 31.3 | 25.5 | 235 | 2.4 | 33.3 | (1268) | 47.30 | CW |
| 425 | 26.9 | 21.9 | 275 | 2.8 | 38.9 | (1480) | 47.30 | CW |

| IG-13VM-SRP2004A-06 DC6V 起動電流 Starting current 780mA | | | | | | | | |
|--|---|--|-----------------------|-------|-------|----------------------------------|--------------------|-----------------------------------|
| 減速比 Reduction Ratio (1/i) | 無負荷 回転数 No-Load Speed min ⁻¹ | 定格 回転数 Rated Speed min ⁻¹ | 定格トルク Rated Torque | | | 起動 トルク Starting Torque mNm | 長さ(L) Length mm | 回転 方向 Direction of rotation |
| | | | mNm | kg·cm | oz·in | | | |
| 16 | 575 | 466 | 9.81 | 0.10 | 1.39 | (51.8) | 39.80 | CW |
| 19 | 495 | 373 | 14.7 | 0.15 | 2.08 | (59.6) | 39.80 | CW |
| 66 | 142 | 108 | 44.1 | 0.45 | 6.25 | (184) | 43.55 | CW |
| 77 | 122 | 91.9 | 53.9 | 0.55 | 7.64 | (218) | 43.55 | CW |
| 90 | 105 | 78.7 | 63.7 | 0.65 | 9.03 | (254) | 43.55 | CW |
| 271 | 34.9 | 26.0 | 177 | 1.8 | 25.0 | (694) | 47.30 | CW |
| 315 | 30.1 | 22.3 | 206 | 2.1 | 29.2 | (795) | 47.30 | CW |
| 366 | 25.9 | 19.3 | 235 | 2.4 | 33.3 | (922) | 47.30 | CW |
| 425 | 22.3 | 16.6 | 275 | 2.8 | 38.9 | (1076) | 47.30 | CW |

| IG-13VM-SRP2003A-06 DC6V 起動電流 Starting current 531mA | | | | | | | | |
|--|---|--|-----------------------|-------|-------|----------------------------------|--------------------|-----------------------------------|
| 減速比 Reduction Ratio (1/i) | 無負荷 回転数 No-Load Speed min ⁻¹ | 定格 回転数 Rated Speed min ⁻¹ | 定格トルク Rated Torque | | | 起動 トルク Starting Torque mNm | 長さ(L) Length mm | 回転 方向 Direction of rotation |
| | | | mNm | kg·cm | oz·in | | | |
| 16 | 462 | 397 | 6.37 | 0.065 | 0.90 | (45.3) | 39.80 | CW |
| 19 | 398 | 343 | 7.35 | 0.075 | 1.04 | (53.2) | 39.80 | CW |
| 66 | 114 | 100 | 19.6 | 0.20 | 2.78 | (160) | 43.55 | CW |
| 77 | 98.0 | 85.6 | 24.5 | 0.25 | 3.47 | (194) | 43.55 | CW |
| 90 | 84.3 | 73.3 | 29.4 | 0.3 | 4.17 | (225) | 43.55 | CW |
| 271 | 28.0 | 24.0 | 88.3 | 0.9 | 12.5 | (618) | 47.30 | CW |
| 315 | 24.1 | 20.8 | 98.1 | 1.0 | 13.9 | (716) | 47.30 | CW |
| 366 | 20.8 | 17.8 | 118 | 1.2 | 16.7 | (818) | 47.30 | CW |
| 425 | 17.9 | 15.3 | 137 | 1.4 | 19.4 | (943) | 47.30 | CW |

| IG-13VM-SRP2002A-12 DC12V 起動電流 Starting current 738mA | | | | | | | | |
|---|---|--|-----------------------|-------|-------|----------------------------------|--------------------|-----------------------------------|
| 減速比 Reduction Ratio (1/i) | 無負荷 回転数 No-Load Speed min ⁻¹ | 定格 回転数 Rated Speed min ⁻¹ | 定格トルク Rated Torque | | | 起動 トルク Starting Torque mNm | 長さ(L) Length mm | 回転 方向 Direction of rotation |
| | | | mNm | kg·cm | oz·in | | | |
| 16 | 768 | 609 | 9.81 | 0.10 | 1.39 | (47.4) | 39.80 | CW |
| 19 | 661 | 543 | 9.81 | 0.10 | 1.39 | (55.0) | 39.80 | CW |
| 66 | 189 | 147 | 34.3 | 0.35 | 4.86 | (154) | 43.55 | CW |
| 77 | 163 | 127 | 39.2 | 0.40 | 5.56 | (177) | 43.55 | CW |
| 90 | 140 | 111 | 44.1 | 0.45 | 6.25 | (213) | 43.55 | CW |
| 271 | 47.0 | 37.0 | 108 | 1.1 | 15.3 | (508) | 47.30 | CW |
| 315 | 40.0 | 31.0 | 127 | 1.3 | 18.1 | (564) | 47.30 | CW |
| 366 | 35.0 | 27.0 | 157 | 1.6 | 22.2 | (687) | 47.30 | CW |
| 425 | 30.0 | 23.0 | 177 | 1.8 | 25.0 | (759) | 47.30 | CW |

| IG-13VM-SRP2001A-12 DC12V 起動電流 Starting current 396mA | | | | | | | | |
|---|---|--|-----------------------|-------|-------|----------------------------------|--------------------|-----------------------------------|
| 減速比 Reduction Ratio (1/i) | 無負荷 回転数 No-Load Speed min ⁻¹ | 定格 回転数 Rated Speed min ⁻¹ | 定格トルク Rated Torque | | | 起動 トルク Starting Torque mNm | 長さ(L) Length mm | 回転 方向 Direction of rotation |
| | | | mNm | kg·cm | oz·in | | | |
| 16 | 564 | 464 | 9.81 | 0.10 | 1.39 | (55.3) | 39.80 | CW |
| 19 | 485 | 374 | 14.7 | 0.15 | 2.08 | (64.2) | 39.80 | CW |
| 66 | 139 | 109 | 44.1 | 0.45 | 6.25 | (204) | 43.55 | CW |
| 77 | 120 | 92.1 | 53.9 | 0.55 | 7.64 | (232) | 43.55 | CW |
| 90 | 103 | 78.9 | 63.7 | 0.65 | 9.03 | (272) | 43.55 | CW |
| 271 | 34.2 | 26.1 | 177 | 1.8 | 25.0 | (747) | 47.30 | CW |
| 315 | 29.4 | 22.4 | 206 | 2.1 | 29.2 | (865) | 47.30 | CW |
| 366 | 25.4 | 19.4 | 235 | 2.4 | 33.3 | (995) | 47.30 | CW |
| 425 | 21.8 | 16.7 | 275 | 2.8 | 38.9 | (1175) | 47.30 | CW |

標準品 Standard
特注品 Custom-made

1. 上記データは参考値です。
2. 上記スペックは一例で、要望スペックにて承ります。

The above data is for reference only.
The above specifications are an example and your specifications are welcomed.

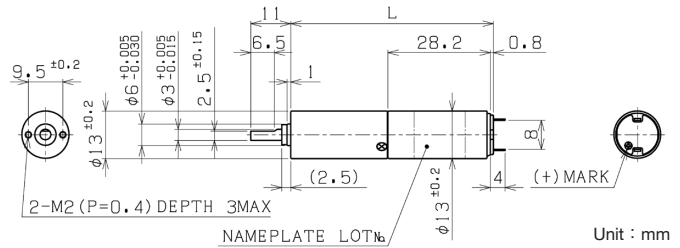
索引 INDEX
選定 Selection Guide
技術情報 Technical Information
モータ Motor
ブラシレス Brushless
エンコーダ Encoder
ギヤードモータ Gear Motor
ブラシレス Brushless
コアレス Coreless
Iron Core
Coreless

φ 13ギヤードモータ Gear Motor

コアレスモータ Coreless Motor

コアレスモータ Coreless Motor **SCR13-28 × ×** page45

遊星ギヤヘッド Planetary Gearhead **IG-13V** page67



| IG-13VM-SRP2807A-06 | | DC6V | | 起動電流 Starting current | | 1590mA | | |
|------------------------------|---|--|-----------------------|-----------------------|-------|------------------------------|--------------------|-------------------------------|
| 減速比 Reduction Ratio (1/i) | 無負荷回転数 No-Load Speed min ⁻¹ | 定格回転数 Rated Speed min ⁻¹ | 定格トルク Rated Torque | | | 起動トルク Starting Torque mNm | 長さ(L) Length mm | 回転方向 Direction of rotation |
| | | | mNm | kg·cm | oz·in | | | |
| 16 | 568 | 522 | 9.81 | 0.10 | 1.39 | (121) | 48.30 | CW |
| 19 | 489 | 437 | 14.7 | 0.15 | 2.08 | (138) | 48.30 | CW |
| 66 | 140 | 126 | 44.1 | 0.45 | 6.25 | (441) | 52.05 | CW |
| 77 | 121 | 108 | 53.9 | 0.55 | 7.64 | (502) | 52.05 | CW |
| 90 | 104 | 92.5 | 63.7 | 0.65 | 9.03 | (576) | 52.05 | CW |
| 271 | 34.5 | 30.7 | 177 | 1.8 | 25.0 | (1607) | 55.80 | CW |
| 315 | 29.7 | 26.4 | 206 | 2.1 | 29.2 | (1854) | 55.80 | CW |
| 366 | 25.6 | 22.8 | 235 | 2.4 | 33.3 | (2149) | 55.80 | CW |
| 425 | 22.0 | 19.6 | 275 | 2.8 | 38.9 | (2521) | 55.80 | CW |

| IG-13VM-SRP2806A-06 | | DC6V | | 起動電流 Starting current | | 1180mA | | |
|------------------------------|---|--|-----------------------|-----------------------|-------|------------------------------|--------------------|-------------------------------|
| 減速比 Reduction Ratio (1/i) | 無負荷回転数 No-Load Speed min ⁻¹ | 定格回転数 Rated Speed min ⁻¹ | 定格トルク Rated Torque | | | 起動トルク Starting Torque mNm | 長さ(L) Length mm | 回転方向 Direction of rotation |
| | | | mNm | kg·cm | oz·in | | | |
| 16 | 499 | 450 | 9.81 | 0.10 | 1.39 | (99.9) | 48.30 | CW |
| 19 | 430 | 375 | 14.7 | 0.15 | 2.08 | (115) | 48.30 | CW |
| 66 | 123 | 108 | 44.1 | 0.45 | 6.25 | (362) | 52.05 | CW |
| 77 | 106 | 92.5 | 53.9 | 0.55 | 7.64 | (423) | 52.05 | CW |
| 90 | 91.2 | 79.4 | 63.7 | 0.65 | 9.03 | (492) | 52.05 | CW |
| 271 | 30.3 | 26.3 | 177 | 1.8 | 25.0 | (1341) | 55.80 | CW |
| 315 | 26.1 | 22.6 | 206 | 2.1 | 29.2 | (1536) | 55.80 | CW |
| 366 | 22.5 | 19.5 | 235 | 2.4 | 33.3 | (1763) | 55.80 | CW |
| 425 | 19.3 | 16.8 | 275 | 2.8 | 38.9 | (2123) | 55.80 | CW |

| IG-13VM-SRP2805A-06 | | DC6V | | 起動電流 Starting current | | 854mA | | |
|------------------------------|---|--|-----------------------|-----------------------|-------|------------------------------|--------------------|-------------------------------|
| 減速比 Reduction Ratio (1/i) | 無負荷回転数 No-Load Speed min ⁻¹ | 定格回転数 Rated Speed min ⁻¹ | 定格トルク Rated Torque | | | 起動トルク Starting Torque mNm | 長さ(L) Length mm | 回転方向 Direction of rotation |
| | | | mNm | kg·cm | oz·in | | | |
| 16 | 412 | 365 | 9.81 | 0.10 | 1.39 | (86.0) | 48.30 | CW |
| 19 | 355 | 303 | 14.7 | 0.15 | 2.08 | (100) | 48.30 | CW |
| 66 | 102 | 87.4 | 44.1 | 0.45 | 6.25 | (308) | 52.05 | CW |
| 77 | 87.4 | 74.6 | 53.9 | 0.55 | 7.64 | (368) | 52.05 | CW |
| 90 | 75.3 | 64.0 | 63.7 | 0.65 | 9.03 | (424) | 52.05 | CW |
| 271 | 25.0 | 21.2 | 177 | 1.8 | 25.0 | (1164) | 55.80 | CW |
| 315 | 21.5 | 18.2 | 206 | 2.1 | 29.2 | (1342) | 55.80 | CW |
| 366 | 18.5 | 15.8 | 235 | 2.4 | 33.3 | (1610) | 55.80 | CW |
| 425 | 16.0 | 13.6 | 275 | 2.8 | 38.9 | (1833) | 55.80 | CW |

| IG-13VM-SRP2804A-12 | | DC12V | | 起動電流 Starting current | | 1140mA | | |
|------------------------------|---|--|-----------------------|-----------------------|-------|------------------------------|--------------------|-------------------------------|
| 減速比 Reduction Ratio (1/i) | 無負荷回転数 No-Load Speed min ⁻¹ | 定格回転数 Rated Speed min ⁻¹ | 定格トルク Rated Torque | | | 起動トルク Starting Torque mNm | 長さ(L) Length mm | 回転方向 Direction of rotation |
| | | | mNm | kg·cm | oz·in | | | |
| 16 | 697 | 574 | 24.5 | 0.25 | 3.47 | (139) | 48.30 | CW |
| 19 | 600 | 491 | 29.4 | 0.30 | 4.17 | (162) | 48.30 | CW |
| 66 | 172 | 140 | 93.2 | 0.95 | 13.2 | (501) | 52.05 | CW |
| 77 | 148 | 121 | 108 | 1.1 | 15.3 | (592) | 52.05 | CW |
| 90 | 127 | 104 | 127 | 1.3 | 18.1 | (701) | 52.05 | CW |
| 271 | 42.3 | 35.6 | 294 | 3.0 | 41.7 | (1856) | 55.80 | CW |
| 315 | 36.4 | 31.5 | 294 | 3.0 | 41.7 | (2184) | 55.80 | CW |
| 366 | 31.3 | 27.7 | 294 | 3.0 | 41.7 | (2556) | 55.80 | CW |
| 425 | 27.0 | 24.3 | 294 | 3.0 | 41.7 | (2940) | 55.80 | CW |

| IG-13VM-SRP2803A-12 | | DC12V | | 起動電流 Starting current | | 766mA | | |
|------------------------------|---|--|-----------------------|-----------------------|-------|------------------------------|--------------------|-------------------------------|
| 減速比 Reduction Ratio (1/i) | 無負荷回転数 No-Load Speed min ⁻¹ | 定格回転数 Rated Speed min ⁻¹ | 定格トルク Rated Torque | | | 起動トルク Starting Torque mNm | 長さ(L) Length mm | 回転方向 Direction of rotation |
| | | | mNm | kg·cm | oz·in | | | |
| 16 | 563 | 468 | 19.6 | 0.20 | 2.78 | (116) | 48.30 | CW |
| 19 | 485 | 414 | 19.6 | 0.20 | 2.78 | (134) | 48.30 | CW |
| 66 | 139 | 116 | 68.6 | 0.70 | 9.72 | (415) | 52.05 | CW |
| 77 | 119 | 99.3 | 83.4 | 0.85 | 11.8 | (504) | 52.05 | CW |
| 90 | 103 | 85.2 | 98.1 | 1.0 | 13.9 | (568) | 52.05 | CW |
| 271 | 34.2 | 28.4 | 265 | 2.7 | 37.5 | (1563) | 55.80 | CW |
| 315 | 29.4 | 24.6 | 294 | 3.0 | 41.7 | (1801) | 55.80 | CW |
| 366 | 25.3 | 21.8 | 294 | 3.0 | 41.7 | (2125) | 55.80 | CW |
| 425 | 21.8 | 19.2 | 294 | 3.0 | 41.7 | (2465) | 55.80 | CW |

| IG-13VM-SRP2802A-12 | | DC12V | | 起動電流 Starting current | | 480mA | | |
|------------------------------|---|--|-----------------------|-----------------------|-------|------------------------------|--------------------|-------------------------------|
| 減速比 Reduction Ratio (1/i) | 無負荷回転数 No-Load Speed min ⁻¹ | 定格回転数 Rated Speed min ⁻¹ | 定格トルク Rated Torque | | | 起動トルク Starting Torque mNm | 長さ(L) Length mm | 回転方向 Direction of rotation |
| | | | mNm | kg·cm | oz·in | | | |
| 16 | 441 | 370 | 14.7 | 0.15 | 2.08 | (91.3) | 48.30 | CW |
| 19 | 380 | 327 | 14.7 | 0.15 | 2.08 | (105) | 48.30 | CW |
| 66 | 109 | 91.2 | 53.9 | 0.55 | 7.64 | (330) | 52.05 | CW |
| 77 | 93.6 | 78.2 | 63.7 | 0.65 | 9.03 | (387) | 52.05 | CW |
| 90 | 80.6 | 66.6 | 78.5 | 0.8 | 11.1 | (452) | 52.05 | CW |
| 271 | 26.8 | 22.3 | 206 | 2.1 | 29.2 | (1227) | 55.80 | CW |
| 315 | 23.1 | 19.1 | 245 | 2.5 | 34.7 | (1415) | 55.80 | CW |
| 366 | 19.9 | 16.4 | 284 | 2.9 | 40.3 | (1615) | 55.80 | CW |
| 425 | 17.1 | 14.5 | 294 | 3.0 | 41.7 | (1934) | 55.80 | CW |

| IG-13VM-SRP2801A-24 | | DC24V | | 起動電流 Starting current | | 547mA | | |
|------------------------------|---|--|-----------------------|-----------------------|-------|------------------------------|--------------------|-------------------------------|
| 減速比 Reduction Ratio (1/i) | 無負荷回転数 No-Load Speed min ⁻¹ | 定格回転数 Rated Speed min ⁻¹ | 定格トルク Rated Torque | | | 起動トルク Starting Torque mNm | 長さ(L) Length mm | 回転方向 Direction of rotation |
| | | | mNm | kg·cm | oz·in | | | |
| 16 | 690 | 565 | 24.5 | 0.25 | 3.47 | (135) | 48.30 | CW |
| 19 | 594 | 483 | 29.4 | 0.30 | 4.17 | (157) | 48.30 | CW |
| 66 | 170 | 138 | 93.2 | 0.95 | 13.2 | (495) | 52.05 | CW |
| 77 | 146 | 119 | 108 | 1.1 | 15.3 | (584) | 52.05 | CW |
| 90 | 126 | 102 | 127 | 1.3 | 18.1 | (667) | 52.05 | CW |
| 271 | 41.9 | 35.1 | 294 | 3.0 | 41.7 | (1812) | 55.80 | CW |
| 315 | 36.1 | 31.0 | 294 | 3.0 | 41.7 | (2081) | 55.80 | CW |
| 366 | 31.1 | 27.3 | 294 | 3.0 | 41.7 | (2406) | 55.80 | CW |
| 425 | 26.7 | 24.0 | 294 | 3.0 | 41.7 | (2907) | 55.80 | CW |

標準品 Standard

特注品 Custom-made

1. 上記データは参考値です。

2. 上記スペックは一例で、要望スペックにて承ります。

The above data is for reference only.

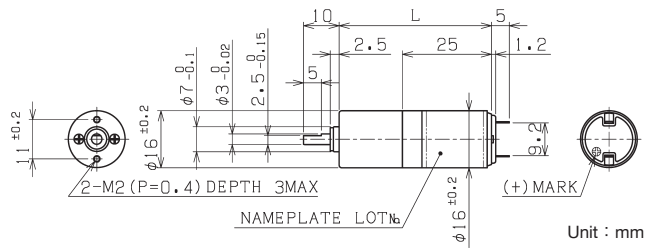
The above specifications are an example and your specifications are welcomed.

φ 16ギヤードモータ Gear Motor

コアレスモータ Coreless Motor

コアレスモータ Coreless Motor **SCR16-25 × ×** page46

スパーギヤヘッド Spur Gearhead **RA-16R** page68



| SCR16G-2503A-06 | | DC6V | | 起動電流 Starting current 319mA | | | | | | |
|------------------------------|---|--|-----------------------|-----------------------------|-------|------------------------------|--------------------|-------------------------------|--|--|
| 減速比 Reduction Ratio (1/i) | 無負荷回転数 No-Load Speed min ⁻¹ | 定格回転数 Rated Speed min ⁻¹ | 定格トルク Rated Torque | | | 起動トルク Starting Torque mNm | 長さ(L) Length mm | 回転方向 Direction of rotation | | |
| | | | mNm | kg·cm | oz·in | | | | | |
| 10 | 537 | 462 | 3.43 | 0.04 | 0.486 | (24.6) | 42.75 | CCW | | |
| 19 | 305 | 257 | 6.86 | 0.07 | 0.972 | (43.6) | 42.75 | CCW | | |
| 31 | 189 | 159 | 9.81 | 0.10 | 1.39 | (61.8) | 42.75 | CW | | |
| 54 | 107 | 93.2 | 14.7 | 0.15 | 2.08 | (114) | 42.75 | CW | | |
| 62 | 94.0 | 79.5 | 19.6 | 0.20 | 2.78 | (127) | 42.75 | CW | | |
| 97 | 60.2 | 51.9 | 24.5 | 0.25 | 3.47 | (178) | 42.75 | CCW | | |
| 150 | 39.0 | 33.4 | 39.2 | 0.4 | 5.56 | (273) | 42.75 | CCW | | |
| 206 | 28.4 | 24.3 | 49.0 | 0.5 | 6.95 | (339) | 42.75 | CW | | |
| 258 | 22.6 | 19.5 | 58.8 | 0.6 | 8.34 | (429) | 42.75 | CW | | |
| 375 | 15.6 | 14.1 | 58.8 | 0.6 | 8.34 | (612) | 42.75 | CW | | |
| 534 | 11.0 | 10.2 | 58.8 | 0.6 | 8.34 | (808) | 42.75 | CW | | |
| 992 | 5.91 | 5.67 | 58.8 | 0.6 | 8.34 | (1448) | 42.75 | CCW | | |
| 1413 | 4.14 | 4.03 | 58.8 | 0.6 | 8.34 | (2213) | 42.75 | CCW | | |

| SCR16G-2506A-06 | | DC6V | | 起動電流 Starting current 612mA | | | | | | |
|------------------------------|---|--|-----------------------|-----------------------------|-------|------------------------------|--------------------|-------------------------------|--|--|
| 減速比 Reduction Ratio (1/i) | 無負荷回転数 No-Load Speed min ⁻¹ | 定格回転数 Rated Speed min ⁻¹ | 定格トルク Rated Torque | | | 起動トルク Starting Torque mNm | 長さ(L) Length mm | 回転方向 Direction of rotation | | |
| | | | mNm | kg·cm | oz·in | | | | | |
| 10 | 623 | 556 | 4.41 | 0.045 | 0.625 | (41.0) | 42.75 | CCW | | |
| 19 | 354 | 315 | 7.85 | 0.080 | 1.11 | (71.3) | 42.75 | CCW | | |
| 31 | 219 | 199 | 9.81 | 0.1 | 1.39 | (107) | 42.75 | CW | | |
| 54 | 125 | 111 | 19.6 | 0.2 | 2.78 | (175) | 42.75 | CW | | |
| 62 | 109 | 98.9 | 19.6 | 0.2 | 2.78 | (212) | 42.75 | CW | | |
| 97 | 69.8 | 62.9 | 29.4 | 0.3 | 4.17 | (297) | 42.75 | CCW | | |
| 150 | 45.3 | 40.4 | 49.0 | 0.5 | 6.95 | (453) | 42.75 | CCW | | |
| 206 | 32.9 | 29.5 | 58.8 | 0.6 | 8.34 | (569) | 42.75 | CW | | |
| 258 | 26.3 | 24.1 | 58.8 | 0.6 | 8.34 | (703) | 42.75 | CW | | |
| 375 | 18.1 | 17.1 | 58.8 | 0.6 | 8.34 | (1064) | 42.75 | CW | | |
| 534 | 12.7 | 12.2 | 58.8 | 0.6 | 8.34 | (1494) | 42.75 | CW | | |
| 992 | 6.85 | 6.69 | 58.8 | 0.6 | 8.34 | (2517) | 42.75 | CCW | | |
| 1413 | 4.81 | 4.73 | 58.8 | 0.6 | 8.34 | (3535) | 42.75 | CCW | | |

| SCR16G-2501A-06 | | DC6V | | 起動電流 Starting current 722mA | | | | | | |
|------------------------------|---|--|-----------------------|-----------------------------|-------|------------------------------|--------------------|-------------------------------|--|--|
| 減速比 Reduction Ratio (1/i) | 無負荷回転数 No-Load Speed min ⁻¹ | 定格回転数 Rated Speed min ⁻¹ | 定格トルク Rated Torque | | | 起動トルク Starting Torque mNm | 長さ(L) Length mm | 回転方向 Direction of rotation | | |
| | | | mNm | kg·cm | oz·in | | | | | |
| 10 | 990 | 843 | 4.41 | 0.045 | 0.625 | (29.7) | 42.75 | CCW | | |
| 19 | 562 | 478 | 7.85 | 0.08 | 1.11 | (52.5) | 42.75 | CCW | | |
| 31 | 348 | 303 | 9.81 | 0.1 | 1.39 | (75.9) | 42.75 | CW | | |
| 54 | 198 | 169 | 19.6 | 0.2 | 2.78 | (134) | 42.75 | CW | | |
| 62 | 173 | 151 | 19.6 | 0.2 | 2.78 | (154) | 42.75 | CW | | |
| 97 | 111 | 95.7 | 29.4 | 0.3 | 4.17 | (213) | 42.75 | CCW | | |
| 150 | 71.9 | 61.3 | 49.0 | 0.5 | 6.95 | (332) | 42.75 | CCW | | |
| 206 | 52.3 | 44.8 | 58.8 | 0.6 | 8.34 | (410) | 42.75 | CW | | |
| 258 | 41.7 | 36.9 | 58.8 | 0.6 | 8.34 | (511) | 42.75 | CW | | |
| 375 | 28.8 | 26.5 | 58.8 | 0.6 | 8.34 | (736) | 42.75 | CW | | |
| 534 | 20.2 | 19.1 | 58.8 | 0.6 | 8.34 | (1080) | 42.75 | CW | | |
| 992 | 10.9 | 10.5 | 58.8 | 0.6 | 8.34 | (1602) | 42.75 | CCW | | |
| 1413 | 7.64 | 7.46 | 58.8 | 0.6 | 8.34 | (2496) | 42.75 | CCW | | |

| SCR16G-2504A-12 | | DC12V | | 起動電流 Starting current 219mA | | | | | | |
|------------------------------|---|--|-----------------------|-----------------------------|-------|------------------------------|--------------------|-------------------------------|--|--|
| 減速比 Reduction Ratio (1/i) | 無負荷回転数 No-Load Speed min ⁻¹ | 定格回転数 Rated Speed min ⁻¹ | 定格トルク Rated Torque | | | 起動トルク Starting Torque mNm | 長さ(L) Length mm | 回転方向 Direction of rotation | | |
| | | | mNm | kg·cm | oz·in | | | | | |
| 10 | 725 | 620 | 3.43 | 0.035 | 0.486 | (23.7) | 42.75 | CCW | | |
| 19 | 412 | 344 | 6.86 | 0.07 | 0.972 | (41.6) | 42.75 | CCW | | |
| 31 | 255 | 214 | 9.81 | 0.10 | 1.39 | (61.0) | 42.75 | CW | | |
| 54 | 145 | 125 | 14.7 | 0.15 | 2.08 | (107) | 42.75 | CW | | |
| 62 | 127 | 107 | 19.6 | 0.20 | 2.78 | (124) | 42.75 | CW | | |
| 97 | 81.2 | 69.6 | 24.5 | 0.25 | 3.47 | (172) | 42.75 | CCW | | |
| 150 | 52.7 | 44.9 | 39.2 | 0.4 | 5.56 | (265) | 42.75 | CCW | | |
| 206 | 38.3 | 32.6 | 49.0 | 0.5 | 6.95 | (329) | 42.75 | CW | | |
| 258 | 30.6 | 26.2 | 58.8 | 0.6 | 8.34 | (409) | 42.75 | CW | | |
| 375 | 21.1 | 19.0 | 58.8 | 0.6 | 8.34 | (591) | 42.75 | CW | | |
| 534 | 14.8 | 13.8 | 58.8 | 0.6 | 8.34 | (870) | 42.75 | CW | | |
| 992 | 7.97 | 7.64 | 58.8 | 0.6 | 8.34 | (1420) | 42.75 | CCW | | |
| 1413 | 5.59 | 5.43 | 58.8 | 0.6 | 8.34 | (2054) | 42.75 | CCW | | |

| SCR16G-2502A-12 | | DC12V | | 起動電流 Starting current 436mA | | | | | | |
|------------------------------|---|--|-----------------------|-----------------------------|-------|------------------------------|--------------------|-------------------------------|--|--|
| 減速比 Reduction Ratio (1/i) | 無負荷回転数 No-Load Speed min ⁻¹ | 定格回転数 Rated Speed min ⁻¹ | 定格トルク Rated Torque | | | 起動トルク Starting Torque mNm | 長さ(L) Length mm | 回転方向 Direction of rotation | | |
| | | | mNm | kg·cm | oz·in | | | | | |
| 10 | 972 | 816 | 5.88 | 0.06 | 0.834 | (36.6) | 42.75 | CCW | | |
| 19 | 552 | 468 | 9.81 | 0.10 | 1.39 | (64.5) | 42.75 | CCW | | |
| 31 | 341 | 288 | 14.7 | 0.15 | 2.08 | (94.6) | 42.75 | CW | | |
| 54 | 194 | 166 | 24.5 | 0.25 | 3.47 | (170) | 42.75 | CW | | |
| 62 | 170 | 144 | 29.4 | 0.30 | 4.17 | (192) | 42.75 | CW | | |
| 97 | 109 | 90.8 | 44.1 | 0.45 | 6.25 | (264) | 42.75 | CCW | | |
| 150 | 70.6 | 60.5 | 58.8 | 0.6 | 8.34 | (411) | 42.75 | CCW | | |
| 206 | 51.3 | 45.4 | 58.8 | 0.6 | 8.34 | (511) | 42.75 | CW | | |
| 258 | 41.0 | 37.2 | 58.8 | 0.6 | 8.34 | (634) | 42.75 | CW | | |
| 375 | 28.2 | 26.4 | 58.8 | 0.6 | 8.34 | (921) | 42.75 | CW | | |
| 534 | 19.8 | 18.9 | 58.8 | 0.6 | 8.34 | (1294) | 42.75 | CW | | |
| 992 | 10.7 | 10.4 | 58.8 | 0.6 | 8.34 | (2097) | 42.75 | CCW | | |
| 1413 | 7.50 | 7.36 | 58.8 | 0.6 | 8.34 | (3150) | 42.75 | CCW | | |

| SCR16G-2512A-12 | | DC12V | | 起動電流 Starting current 1400mA | | | | | | |
|------------------------------|---|--|-----------------------|------------------------------|-------|------------------------------|--------------------|-------------------------------|--|--|
| 減速比 Reduction Ratio (1/i) | 無負荷回転数 No-Load Speed min ⁻¹ | 定格回転数 Rated Speed min ⁻¹ | 定格トルク Rated Torque | | | 起動トルク Starting Torque mNm | 長さ(L) Length mm | 回転方向 Direction of rotation | | |
| | | | mNm | kg·cm | oz·in | | | | | |
| 10 | 1470 | 1280 | 9.81 | 0.10 | 1.39 | (75.9) | 42.75 | CCW | | |
| 19 | 832 | 755 | 12.7 | 0.13 | 1.81 | (137) | 42.75 | CCW | | |
| 31 | 515 | 440 | 29.4 | 0.30 | 4.17 | (202) | 42.75 | CW | | |
| 54 | 293 | 265 | 34.3 | 0.35 | 4.86 | (359) | 42.75 | CW | | |
| 62 | 257 | 235 | 34.3 | 0.35 | 4.86 | (401) | 42.75 | CW | | |
| 97 | 164 | 150 | 49.0 | 0.5 | 6.95 | (574) | 42.75 | CCW | | |
| 150 | 107 | 99.4 | 58.8 | 0.6 | 8.34 | (828) | 42.75 | CCW | | |
| 206 | 77.5 | 73.3 | 58.8 | 0.6 | 8.34 | (1085) | 42.75 | CW | | |
| 258 | 61.8 | 59.1 | 58.8 | 0.6 | 8.34 | (1346) | 42.75 | CW | | |
| 375 | 42.6 | 41.3 | 58.8 | 0.6 | 8.34 | (1927) | 42.75 | CW | | |
| 534 | 29.9 | 29.3 | 58.8 | 0.6 | 8.34 | (2930) | 42.75 | CW | | |
| 992 | 16.1 | 15.9 | 58.8 | 0.6 | 8.34 | (4733) | 42.75 | CCW | | |
| 1413 | 11.3 | 11.2 | 58.8 | 0.6 | 8.34 | (6644) | 42.75 | CCW | | |

| SCR16G-2507A-24 | | DC24V | | 起動電流 Starting current 359mA | | | | | | |
|------------------------------|---|--|-----------------------|-----------------------------|-------|------------------------------|--------------------|-------------------------------|--|--|
| 減速比 Reduction Ratio (1/i) | 無負荷回転数 No-Load Speed min ⁻¹ | 定格回転数 Rated Speed min ⁻¹ | 定格トルク Rated Torque | | | 起動トルク Starting Torque mNm | 長さ(L) Length mm | 回転方向 Direction of rotation | | |
| | | | mNm | kg·cm | oz·in | | | | | |
| 10 | 1160 | 991 | 7.35 | 0.08 | 1.04 | (50.4) | 42.75 | CCW | | |
| 19 | 661 | 564 | 12.7 | 0.13 | 1.81 | (86.5) | 42.75 | CCW | | |
| 31 | 409 | 346 | 19.6 | 0.20 | 2.78 | (127) | 42.75 | CW | | |
| 54 | 233 | 197 | 34.3 | 0.35 | 4.86 | (222) | 42.75 | CW | | |
| 62 | 204 | 176 | 34.3 | 0.35 | 4.86 | (250) | 42.75 | CW | | |
| 97 | 130 | 113 | 49.0 | 0.5 | 6.95 | (375) | 42.75 | CCW | | |
| 150 | 84.6 | 75.6 | 58.8 | 0.6 | 8.34 | (553) | 42.75 | CCW | | |
| 206 | 61.5 | 56.2 | 58.8 | 0.6 | 8.34 | (682) | 42.75 | CW | | |
| 258 | 49.1 | 45.7 | 58.8 | 0.6 | 8.34 | (849) | 42.75 | CW | | |
| 375 | 33.8 | 32.2 | 58.8 | 0.6 | 8.34 | (1242) | 42.75 | CW | | |
| 534 | 23.7 | 22.9 | 58.8 | 0.6 | 8.34 | (1742) | 42.75 | CW | | |
| 992 | 12.8 | 12.5 | 58.8 | 0.6 | 8.34 | (2509) | 42.75 | CCW | | |
| 1413 | 8.98 | 8.86 | 58.8 | 0.6 | 8.34 | (4400) | 42.75 | CCW | | |

| SCR16G-2509A-24 | | DC24V | | 起動電流 Starting current 359mA | | | | | | |
|------------------------------|---|--|-----------------------|-----------------------------|-------|------------------------------|--------------------|-------------------------------|--|--|
| 減速比 Reduction Ratio (1/i) | 無負荷回転数 No-Load Speed min ⁻¹ | 定格回転数 Rated Speed min ⁻¹ | 定格トルク Rated Torque | | | 起動トルク Starting Torque mNm | 長さ(L) Length mm | 回転方向 Direction of rotation | | |
| | | | mNm | kg·cm | oz·in | | | | | |
| 10 | 1160 | 991 | 7.35 | 0.08 | 1.04 | (50.4) | 42.75 | CCW | | |
| 19 | 661 | 564 | 12.7 | 0.13 | 1.81 | (86.5) | 42.75 | CCW | | |
| 31 | 409 | 346 | 19.6 | 0.20 | 2.78 | (127) | 42.75 | CW | | |
| 54 | 233 | 197 | 34.3 | 0.35 | 4.86 | (222) | 42.75 | CW | | |
| 62 | 204 | 176 | 34.3 | 0.35 | 4.86 | (250) | 42.75 | CW | | |
| 97 | 130 | 113 | 49.0 | 0.5 | 6.95 | (375) | 42.75 | CCW | | |
| 150 | 84.6 | 75.6 | 58.8 | 0.6 | 8.34 | (553) | 42.75 | CCW | | |
| 206 | 61.5 | 56.2 | 58.8 | 0.6 | 8.34 | (682) | 42.75 | CW | | |
| 258 | 49.1 | 45.7 | 58.8 | 0.6 | 8.34 | (849) | 42.75 | CW | | |
| 375 | 33.8 | 32.2 | 58.8 | 0.6 | 8.34 | (1242) | 42.75 | CW | | |
| 534 | 23.7 | 22.9 | 58.8 | 0.6 | 8.34 | (1742) | 42.75 | CW | | |
| 992 | 12.8 | 12.5 | 58.8 | 0.6 | 8.34 | (2509) | 42.75 | CCW | | |
| 1413 | 8.98 | 8.86 | 58.8 | 0.6 | 8.34 | (4400) | 42.75 | CCW | | |

：標準品 Standard
 ：特注品 Custom-made

1. 上記データは参考値です。
 2. 上記スペックは一例で、要望スペックにて承ります。

The above data is for reference only.
 The above specifications are an example and your specifications are welcomed.

索引 INDEX

選定 Selection Guide

技術情報 Technical Information

モータ Motor

ブラシレス コアレス Coreless

ブラシレス ブラシレス Brushless

エンコーダ Encoder

光学 Optical

ギヤードモータ Gearhead

スパーギヤヘッド Spur Gearhead

コアレス コアレス Coreless

コアレス Iron Core

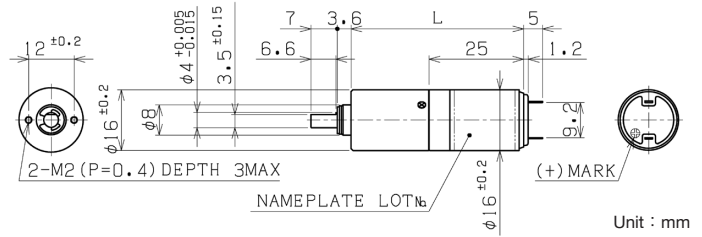
ブラシレス ブラシレス Brushless

φ 16ギヤードモータ Gear Motor

コアレスモータ Coreless Motor

コアレスモータ Coreless Motor **SCR16-25 × ×** page46

遊星ギヤヘッド Planetary Gearhead **IG-16** page69



| IG-16GM-SR2503A-06 DC6V | | 起動電流 Starting current 319mA | | | | | | | | | | | | |
|------------------------------|---|--|-----------------------|-------|-------|----------------------------------|--------------------|-----------------------------------|--|--|--|--|--|--|
| 減速比 Reduction Ratio (1/i) | 無負荷 回転数 No-Load Speed min ⁻¹ | 定格 回転数 Rated Speed min ⁻¹ | 定格トルク Rated Torque | | | 起動 トルク Starting Torque mNm | 長さ(L) Length mm | 回転 方向 Direction of rotation | | | | | | |
| | | | mNm | kg·cm | oz·in | | | | | | | | | |
| 4 | 1050 | 884 | 1.47 | 0.015 | 0.208 | (9.30) | 42.4 | CW | | | | | | |
| 15 | 304 | 246 | 4.90 | 0.050 | 0.695 | (25.7) | 42.4 | CW | | | | | | |
| 23 | 199 | 162 | 7.35 | 0.075 | 1.04 | (39.5) | 42.4 | CW | | | | | | |
| 61 | 77.1 | 63.2 | 14.7 | 0.15 | 2.08 | (81.5) | 45.6 | CW | | | | | | |
| 107 | 44.1 | 36.5 | 24.5 | 0.25 | 3.47 | (142) | 45.6 | CW | | | | | | |
| 242 | 19.5 | 15.9 | 49.0 | 0.50 | 6.95 | (265) | 48.8 | CW | | | | | | |
| 326 | 14.5 | 11.7 | 68.6 | 0.70 | 9.72 | (355) | 48.8 | CW | | | | | | |
| 410 | 11.6 | 9.38 | 83.4 | 0.85 | 11.8 | (436) | 48.8 | CW | | | | | | |
| 483 | 9.81 | 7.96 | 98.1 | 1.0 | 13.9 | (520) | 48.8 | CW | | | | | | |

| IG-16GM-SR2506A-06 DC6V | | 起動電流 Starting current 612mA | | | | | | | | | | | | |
|------------------------------|---|--|-----------------------|-------|-------|----------------------------------|--------------------|-----------------------------------|--|--|--|--|--|--|
| 減速比 Reduction Ratio (1/i) | 無負荷 回転数 No-Load Speed min ⁻¹ | 定格 回転数 Rated Speed min ⁻¹ | 定格トルク Rated Torque | | | 起動 トルク Starting Torque mNm | 長さ(L) Length mm | 回転 方向 Direction of rotation | | | | | | |
| | | | mNm | kg·cm | oz·in | | | | | | | | | |
| 4 | 1340 | 1180 | 1.96 | 0.02 | 0.278 | (16.4) | 42.4 | CW | | | | | | |
| 15 | 386 | 338 | 5.88 | 0.06 | 0.834 | (47.3) | 42.4 | CW | | | | | | |
| 23 | 252 | 221 | 8.83 | 0.09 | 1.25 | (71.8) | 42.4 | CW | | | | | | |
| 61 | 97.9 | 88.1 | 14.7 | 0.15 | 2.08 | (147) | 45.6 | CW | | | | | | |
| 107 | 56.0 | 49.6 | 29.4 | 0.3 | 4.17 | (257) | 45.6 | CW | | | | | | |
| 242 | 24.8 | 21.7 | 58.8 | 0.6 | 8.34 | (470) | 48.8 | CW | | | | | | |
| 326 | 18.4 | 16.2 | 78.5 | 0.8 | 11.1 | (657) | 48.8 | CW | | | | | | |
| 410 | 14.7 | 12.9 | 98.1 | 1.0 | 13.9 | (801) | 48.8 | CW | | | | | | |
| 483 | 12.4 | 10.9 | 118 | 1.2 | 16.7 | (975) | 48.8 | CW | | | | | | |

| IG-16GM-SR2501A-06 DC6V | | 起動電流 Starting current 722mA | | | | | | | | | | | | |
|------------------------------|---|--|-----------------------|-------|-------|----------------------------------|--------------------|-----------------------------------|--|--|--|--|--|--|
| 減速比 Reduction Ratio (1/i) | 無負荷 回転数 No-Load Speed min ⁻¹ | 定格 回転数 Rated Speed min ⁻¹ | 定格トルク Rated Torque | | | 起動 トルク Starting Torque mNm | 長さ(L) Length mm | 回転 方向 Direction of rotation | | | | | | |
| | | | mNm | kg·cm | oz·in | | | | | | | | | |
| 4 | 2020 | 1680 | 1.96 | 0.02 | 0.278 | (11.6) | 42.4 | CW | | | | | | |
| 15 | 584 | 478 | 5.88 | 0.06 | 0.834 | (32.4) | 42.4 | CW | | | | | | |
| 23 | 381 | 313 | 8.83 | 0.09 | 1.25 | (49.5) | 42.4 | CW | | | | | | |
| 61 | 148 | 127 | 14.7 | 0.15 | 2.08 | (104) | 45.6 | CW | | | | | | |
| 107 | 84.7 | 70.8 | 29.4 | 0.3 | 4.17 | (179) | 45.6 | CW | | | | | | |
| 242 | 37.5 | 30.8 | 58.8 | 0.6 | 8.34 | (329) | 48.8 | CW | | | | | | |
| 326 | 27.9 | 22.9 | 78.5 | 0.8 | 11.1 | (438) | 48.8 | CW | | | | | | |
| 410 | 22.2 | 18.3 | 98.1 | 1.0 | 13.9 | (558) | 48.8 | CW | | | | | | |
| 483 | 18.8 | 15.4 | 118 | 1.2 | 16.7 | (652) | 48.8 | CW | | | | | | |

| IG-16GM-SR2504A-12 DC12V | | 起動電流 Starting current 219mA | | | | | | | | | | | | |
|------------------------------|---|--|-----------------------|-------|-------|----------------------------------|--------------------|-----------------------------------|--|--|--|--|--|--|
| 減速比 Reduction Ratio (1/i) | 無負荷 回転数 No-Load Speed min ⁻¹ | 定格 回転数 Rated Speed min ⁻¹ | 定格トルク Rated Torque | | | 起動 トルク Starting Torque mNm | 長さ(L) Length mm | 回転 方向 Direction of rotation | | | | | | |
| | | | mNm | kg·cm | oz·in | | | | | | | | | |
| 4 | 1410 | 1170 | 1.47 | 0.015 | 0.208 | (8.64) | 42.4 | CW | | | | | | |
| 15 | 408 | 326 | 4.90 | 0.050 | 0.695 | (24.4) | 42.4 | CW | | | | | | |
| 23 | 266 | 214 | 7.35 | 0.075 | 1.04 | (37.6) | 42.4 | CW | | | | | | |
| 61 | 103 | 83.8 | 14.7 | 0.15 | 2.08 | (78.9) | 45.6 | CW | | | | | | |
| 107 | 59.1 | 48.5 | 24.5 | 0.25 | 3.47 | (137) | 45.6 | CW | | | | | | |
| 242 | 26.2 | 21.0 | 49.0 | 0.50 | 6.95 | (247) | 48.8 | CW | | | | | | |
| 326 | 19.5 | 15.5 | 68.6 | 0.70 | 9.72 | (334) | 48.8 | CW | | | | | | |
| 410 | 15.5 | 12.4 | 83.4 | 0.85 | 11.8 | (417) | 48.8 | CW | | | | | | |
| 483 | 13.1 | 10.5 | 98.1 | 1.0 | 13.9 | (494) | 48.8 | CW | | | | | | |

| IG-16GM-SR2502A-12 DC12V | | 起動電流 Starting current 436mA | | | | | | | | | | | | |
|------------------------------|---|--|-----------------------|-------|-------|----------------------------------|--------------------|-----------------------------------|--|--|--|--|--|--|
| 減速比 Reduction Ratio (1/i) | 無負荷 回転数 No-Load Speed min ⁻¹ | 定格 回転数 Rated Speed min ⁻¹ | 定格トルク Rated Torque | | | 起動 トルク Starting Torque mNm | 長さ(L) Length mm | 回転 方向 Direction of rotation | | | | | | |
| | | | mNm | kg·cm | oz·in | | | | | | | | | |
| 4 | 2060 | 1710 | 2.45 | 0.025 | 0.347 | (14.4) | 42.4 | CW | | | | | | |
| 15 | 594 | 481 | 7.85 | 0.08 | 1.11 | (41.3) | 42.4 | CW | | | | | | |
| 23 | 387 | 328 | 9.81 | 0.10 | 1.39 | (64.3) | 42.4 | CW | | | | | | |
| 61 | 150 | 122 | 24.5 | 0.25 | 3.47 | (131) | 45.6 | CW | | | | | | |
| 107 | 86.1 | 69.5 | 44.1 | 0.45 | 6.25 | (229) | 45.6 | CW | | | | | | |
| 242 | 38.1 | 31.0 | 78.5 | 0.8 | 11.1 | (421) | 48.8 | CW | | | | | | |
| 326 | 28.3 | 22.9 | 108 | 1.1 | 15.3 | (566) | 48.8 | CW | | | | | | |
| 410 | 22.6 | 18.2 | 137 | 1.4 | 19.4 | (704) | 48.8 | CW | | | | | | |
| 483 | 19.1 | 15.5 | 157 | 1.6 | 22.2 | (833) | 48.8 | CW | | | | | | |

| IG-16GM-SR2512A-12 DC12V | | 起動電流 Starting current 1400mA | | | | | | | | | | | | |
|------------------------------|---|--|-----------------------|-------|-------|----------------------------------|--------------------|-----------------------------------|--|--|--|--|--|--|
| 減速比 Reduction Ratio (1/i) | 無負荷 回転数 No-Load Speed min ⁻¹ | 定格 回転数 Rated Speed min ⁻¹ | 定格トルク Rated Torque | | | 起動 トルク Starting Torque mNm | 長さ(L) Length mm | 回転 方向 Direction of rotation | | | | | | |
| | | | mNm | kg·cm | oz·in | | | | | | | | | |
| 4 | 3340 | 2850 | 4.90 | 0.05 | 0.695 | (33.4) | 42.4 | CW | | | | | | |
| 15 | 965 | 816 | 14.7 | 0.15 | 2.08 | (95.2) | 42.4 | CW | | | | | | |
| 23 | 630 | 545 | 19.6 | 0.20 | 2.78 | (145) | 42.4 | CW | | | | | | |
| 61 | 245 | 209 | 44.1 | 0.45 | 6.25 | (300) | 45.6 | CW | | | | | | |
| 107 | 140 | 118 | 83.4 | 0.85 | 11.8 | (531) | 45.6 | CW | | | | | | |
| 242 | 61.9 | 52.5 | 147 | 1.5 | 20.8 | (968) | 48.8 | CW | | | | | | |
| 326 | 46.1 | 40.8 | 147 | 1.5 | 20.8 | (1279) | 48.8 | CW | | | | | | |
| 410 | 36.7 | 32.3 | 196 | 2.0 | 27.8 | (1635) | 48.8 | CW | | | | | | |
| 483 | 31.1 | 27.9 | 196 | 2.0 | 27.8 | (1905) | 48.8 | CW | | | | | | |

| IG-16GM-SR2507A-24 DC24V | | 起動電流 Starting current 359mA | | | | | | | | | | | | |
|------------------------------|---|--|-----------------------|-------|-------|----------------------------------|--------------------|-----------------------------------|--|--|--|--|--|--|
| 減速比 Reduction Ratio (1/i) | 無負荷 回転数 No-Load Speed min ⁻¹ | 定格 回転数 Rated Speed min ⁻¹ | 定格トルク Rated Torque | | | 起動 トルク Starting Torque mNm | 長さ(L) Length mm | 回転 方向 Direction of rotation | | | | | | |
| | | | mNm | kg·cm | oz·in | | | | | | | | | |
| 4 | 2560 | 2130 | 3.43 | 0.035 | 0.486 | (20.4) | 42.4 | CW | | | | | | |
| 15 | 738 | 613 | 9.81 | 0.10 | 1.39 | (57.9) | 42.4 | CW | | | | | | |
| 23 | 482 | 402 | 14.7 | 0.15 | 2.08 | (88.6) | 42.4 | CW | | | | | | |
| 61 | 187 | 157 | 29.4 | 0.30 | 4.17 | (183) | 45.6 | CW | | | | | | |
| 107 | 107 | 89.0 | 53.9 | 0.55 | 7.64 | (320) | 45.6 | CW | | | | | | |
| 242 | 47.4 | 39.5 | 98.1 | 1.0 | 13.9 | (589) | 48.8 | CW | | | | | | |
| 326 | 35.2 | 29.1 | 137 | 1.4 | 19.4 | (791) | 48.8 | CW | | | | | | |
| 410 | 28.0 | 23.3 | 167 | 1.7 | 23.6 | (995) | 48.8 | CW | | | | | | |
| 483 | 23.8 | 19.8 | 196 | 2.0 | 27.8 | (1166) | 48.8 | CW | | | | | | |

：標準品 Standard
：特注品 Custom-made

1. 上記データは参考値です。
2. 上記スペックは一例で、要望スペックにて承ります。

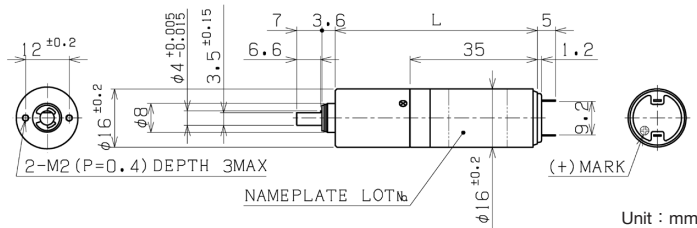
The above data is for reference only.
The above specifications are an example and your specifications are welcomed.

φ 16ギヤードモータ Gear Motor

コアレスモータ Coreless Motor

コアレスモータ Coreless Motor **SCR16-35 × ×** page47

遊星ギヤヘッド Planetary Gearhead **IG-16** page69



Unit : mm

| IG-16GM-SR3505A-06 DC6V | | 起動電流 Starting current 534mA | | | | | | |
|------------------------------|---|--|-----------------------|-------|--------------|------------------------------|--------------------|-------------------------------|
| 減速比 Reduction Ratio (1/i) | 無負荷回転数 No-Load Speed min ⁻¹ | 定格回転数 Rated Speed min ⁻¹ | 定格トルク Rated Torque | | | 起動トルク Starting Torque mNm | 長さ(L) Length mm | 回転方向 Direction of rotation |
| | | | mNm | kg·cm | oz·in | | | |
| 4 | 976 | 835 | 2.94 | 0.03 | 0.417 (20.4) | 52.4 | CW | |
| 15 | 282 | 239 | 8.83 | 0.09 | 1.25 (57.9) | 52.4 | CW | |
| 23 | 184 | 163 | 9.81 | 0.10 | 1.39 (86.0) | 52.4 | CW | |
| 61 | 71.4 | 61.8 | 24.5 | 0.25 | 3.47 (182) | 55.6 | CW | |
| 107 | 40.8 | 34.6 | 49.0 | 0.5 | 6.95 (322) | 55.6 | CW | |
| 242 | 18.1 | 15.4 | 88.3 | 0.9 | 12.5 (592) | 58.8 | CW | |
| 326 | 13.4 | 11.4 | 118 | 1.2 | 16.7 (791) | 58.8 | CW | |
| 410 | 10.7 | 9.12 | 147 | 1.5 | 20.8 (996) | 58.8 | CW | |
| 483 | 9.08 | 7.70 | 177 | 1.8 | 25.0 (1165) | 58.8 | CW | |

| IG-16GM-SR3501A-06 DC6V | | 起動電流 Starting current 1500mA | | | | | | |
|------------------------------|---|--|-----------------------|-------|--------------|------------------------------|--------------------|-------------------------------|
| 減速比 Reduction Ratio (1/i) | 無負荷回転数 No-Load Speed min ⁻¹ | 定格回転数 Rated Speed min ⁻¹ | 定格トルク Rated Torque | | | 起動トルク Starting Torque mNm | 長さ(L) Length mm | 回転方向 Direction of rotation |
| | | | mNm | kg·cm | oz·in | | | |
| 4 | 1300 | 1170 | 4.90 | 0.05 | 0.695 (49.0) | 52.4 | CW | |
| 15 | 374 | 335 | 14.7 | 0.15 | 2.08 (141) | 52.4 | CW | |
| 23 | 244 | 222 | 19.6 | 0.20 | 2.78 (217) | 52.4 | CW | |
| 61 | 94.8 | 85.3 | 44.1 | 0.45 | 6.25 (440) | 55.6 | CW | |
| 107 | 54.3 | 48.4 | 83.4 | 0.85 | 11.8 (768) | 55.6 | CW | |
| 242 | 24.0 | 21.5 | 147 | 1.5 | 20.8 (1411) | 58.8 | CW | |
| 326 | 17.9 | 16.5 | 147 | 1.5 | 20.8 (1880) | 58.8 | CW | |
| 410 | 14.2 | 13.0 | 196 | 2.0 | 27.8 (2319) | 58.8 | CW | |
| 483 | 12.1 | 11.2 | 196 | 2.0 | 27.8 (2635) | 58.8 | CW | |

| IG-16GM-SR3502A-12 DC12V | | 起動電流 Starting current 862mA | | | | | | |
|------------------------------|---|--|-----------------------|-------|--------------|------------------------------|--------------------|-------------------------------|
| 減速比 Reduction Ratio (1/i) | 無負荷回転数 No-Load Speed min ⁻¹ | 定格回転数 Rated Speed min ⁻¹ | 定格トルク Rated Torque | | | 起動トルク Starting Torque mNm | 長さ(L) Length mm | 回転方向 Direction of rotation |
| | | | mNm | kg·cm | oz·in | | | |
| 4 | 1760 | 1460 | 6.86 | 0.07 | 0.972 (40.2) | 52.4 | CW | |
| 15 | 507 | 420 | 19.6 | 0.20 | 2.78 (114) | 52.4 | CW | |
| 23 | 331 | 276 | 29.4 | 0.30 | 4.17 (177) | 52.4 | CW | |
| 61 | 128 | 106 | 63.7 | 0.65 | 9.03 (371) | 55.6 | CW | |
| 107 | 73.5 | 62.2 | 98.1 | 1.0 | 13.9 (638) | 55.6 | CW | |
| 242 | 32.6 | 28.4 | 147 | 1.5 | 20.8 (1141) | 58.8 | CW | |
| 326 | 24.2 | 21.9 | 147 | 1.5 | 20.8 (1547) | 58.8 | CW | |
| 410 | 19.3 | 17.4 | 196 | 2.0 | 27.8 (1991) | 58.8 | CW | |
| 483 | 16.3 | 15.0 | 196 | 2.0 | 27.8 (2458) | 58.8 | CW | |

| IG-16GM-SR3506A-12 DC12V | | 起動電流 Starting current 1260mA | | | | | | |
|------------------------------|---|--|-----------------------|-------|--------------|------------------------------|--------------------|-------------------------------|
| 減速比 Reduction Ratio (1/i) | 無負荷回転数 No-Load Speed min ⁻¹ | 定格回転数 Rated Speed min ⁻¹ | 定格トルク Rated Torque | | | 起動トルク Starting Torque mNm | 長さ(L) Length mm | 回転方向 Direction of rotation |
| | | | mNm | kg·cm | oz·in | | | |
| 4 | 2270 | 2020 | 4.90 | 0.05 | 0.695 (44.5) | 52.4 | CW | |
| 15 | 656 | 605 | 9.81 | 0.10 | 1.39 (126) | 52.4 | CW | |
| 23 | 428 | 385 | 19.6 | 0.20 | 2.78 (195) | 52.4 | CW | |
| 61 | 166 | 148 | 44.1 | 0.45 | 6.25 (407) | 55.6 | CW | |
| 107 | 95.0 | 84.5 | 78.5 | 0.8 | 11.1 (710) | 55.6 | CW | |
| 242 | 42.1 | 37.3 | 147 | 1.5 | 20.8 (1289) | 58.8 | CW | |
| 326 | 31.3 | 28.7 | 147 | 1.5 | 20.8 (1770) | 58.8 | CW | |
| 410 | 24.9 | 22.7 | 196 | 2.0 | 27.8 (2218) | 58.8 | CW | |
| 483 | 21.1 | 19.5 | 196 | 2.0 | 27.8 (2585) | 58.8 | CW | |

| IG-16GM-SR3504A-24 DC24V | | 起動電流 Starting current 624mA | | | | | | |
|------------------------------|---|--|-----------------------|-------|--------------|------------------------------|--------------------|-------------------------------|
| 減速比 Reduction Ratio (1/i) | 無負荷回転数 No-Load Speed min ⁻¹ | 定格回転数 Rated Speed min ⁻¹ | 定格トルク Rated Torque | | | 起動トルク Starting Torque mNm | 長さ(L) Length mm | 回転方向 Direction of rotation |
| | | | mNm | kg·cm | oz·in | | | |
| 4 | 2590 | 2350 | 3.43 | 0.035 | 0.486 (37.0) | 52.4 | CW | |
| 15 | 747 | 678 | 9.81 | 0.10 | 1.39 (106) | 52.4 | CW | |
| 23 | 487 | 444 | 14.7 | 0.15 | 2.08 (166) | 52.4 | CW | |
| 61 | 189 | 173 | 29.4 | 0.30 | 4.17 (347) | 55.6 | CW | |
| 107 | 108 | 98.4 | 53.9 | 0.55 | 7.64 (606) | 55.6 | CW | |
| 242 | 47.9 | 43.6 | 98.1 | 1.0 | 13.9 (1093) | 58.8 | CW | |
| 326 | 35.7 | 32.3 | 137 | 1.4 | 19.4 (1439) | 58.8 | CW | |
| 410 | 28.4 | 25.8 | 167 | 1.7 | 23.6 (1824) | 58.8 | CW | |
| 483 | 24.1 | 21.9 | 196 | 2.0 | 27.8 (2147) | 58.8 | CW | |

| IG-16GM-SR3509A-24 DC24V | | 起動電流 Starting current 748mA | | | | | | |
|------------------------------|---|--|-----------------------|-------|--------------|------------------------------|--------------------|-------------------------------|
| 減速比 Reduction Ratio (1/i) | 無負荷回転数 No-Load Speed min ⁻¹ | 定格回転数 Rated Speed min ⁻¹ | 定格トルク Rated Torque | | | 起動トルク Starting Torque mNm | 長さ(L) Length mm | 回転方向 Direction of rotation |
| | | | mNm | kg·cm | oz·in | | | |
| 4 | 2540 | 2370 | 3.43 | 0.035 | 0.486 (51.2) | 52.4 | CW | |
| 15 | 733 | 683 | 9.81 | 0.10 | 1.39 (144) | 52.4 | CW | |
| 23 | 478 | 446 | 14.7 | 0.15 | 2.08 (220) | 52.4 | CW | |
| 61 | 186 | 174 | 29.4 | 0.30 | 4.17 (456) | 55.6 | CW | |
| 107 | 106 | 99.1 | 53.9 | 0.55 | 7.64 (828) | 55.6 | CW | |
| 242 | 47.0 | 43.9 | 98.1 | 1.0 | 13.9 (1487) | 58.8 | CW | |
| 326 | 35.0 | 32.5 | 137 | 1.4 | 19.4 (1918) | 58.8 | CW | |
| 410 | 27.8 | 26.0 | 167 | 1.7 | 23.6 (2579) | 58.8 | CW | |
| 483 | 23.6 | 22.0 | 196 | 2.0 | 27.8 (2891) | 58.8 | CW | |

標準品 Standard

特注品 Custom-made

1. 上記データは参考値です。

2. 上記スペックは一例で、要望スペックにて承ります。

The above data is for reference only.

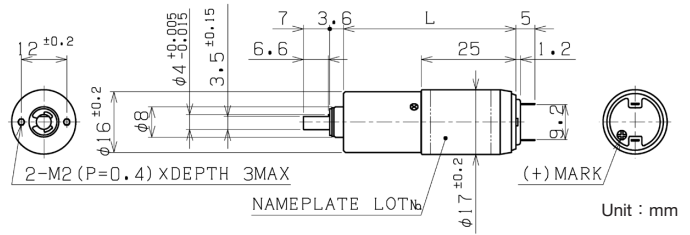
The above specifications are an example and your specifications are welcomed.

φ 17ギヤードモータ Gear Motor

コアレスモータ Coreless Motor

コアレスモータ Coreless Motor **SCR17-25 × ×** page48

遊星ギヤヘッド Planetary Gearhead **IG-16** page69



| IG-16GM-SRU2501A-06 DC6V | | 起動電流 Starting current 2310mA | | | | |
|---------------------------|--|-------------------------------------|--------------------|---------------------------|-----------------|----------------------------|
| 減速比 Reduction Ratio (1/i) | 無負荷回転数 No-Load Speed min ⁻¹ | 定格回転数 Rated Speed min ⁻¹ | 定格トルク Rated Torque | 起動トルク Starting Torque mNm | 長さ(L) Length mm | 回転方向 Direction of rotation |
| 4 | 2200 | 1840 | 6.86 0.07 0.972 | (41.9) | 42.4 | CW |
| 15 | 635 | 531 | 19.6 0.20 2.78 | (120) | 42.4 | CW |
| 23 | 415 | 348 | 29.4 0.30 4.17 | (182) | 42.4 | CW |
| 61 | 161 | 134 | 63.7 0.65 9.03 | (380) | 45.6 | CW |
| 107 | 92.1 | 78.5 | 98.1 1.0 13.9 | (664) | 45.6 | CW |
| 242 | 40.8 | 35.8 | 147 1.5 20.8 | (1200) | 48.8 | CW |
| 326 | 30.3 | 27.6 | 147 1.5 20.8 | (1650) | 48.8 | CW |
| 410 | 24.1 | 21.8 | 196 2.0 27.8 | (2054) | 48.8 | CW |
| 483 | 20.5 | 18.8 | 196 2.0 27.8 | (2364) | 48.8 | CW |

| IG-16GM-SRU2502A-06 DC6V | | 起動電流 Starting current 1660mA | | | | |
|---------------------------|--|-------------------------------------|--------------------|---------------------------|-----------------|----------------------------|
| 減速比 Reduction Ratio (1/i) | 無負荷回転数 No-Load Speed min ⁻¹ | 定格回転数 Rated Speed min ⁻¹ | 定格トルク Rated Torque | 起動トルク Starting Torque mNm | 長さ(L) Length mm | 回転方向 Direction of rotation |
| 4 | 1790 | 1510 | 5.88 0.06 0.834 | (37.6) | 42.4 | CW |
| 15 | 517 | 446 | 14.7 0.15 2.08 | (107) | 42.4 | CW |
| 23 | 338 | 287 | 24.5 0.25 3.47 | (162) | 42.4 | CW |
| 61 | 131 | 110 | 53.9 0.55 7.64 | (336) | 45.6 | CW |
| 107 | 75.0 | 63.2 | 93.2 0.95 13.2 | (592) | 45.6 | CW |
| 242 | 33.2 | 28.7 | 147 1.5 20.8 | (1085) | 48.8 | CW |
| 326 | 24.7 | 22.2 | 147 1.5 20.8 | (1452) | 48.8 | CW |
| 410 | 19.7 | 17.6 | 196 2.0 27.8 | (1839) | 48.8 | CW |
| 483 | 16.7 | 15.2 | 196 2.0 27.8 | (2182) | 48.8 | CW |

| IG-16GM-SRU2503A-06 DC6V | | 起動電流 Starting current 1220mA | | | | |
|---------------------------|--|-------------------------------------|--------------------|---------------------------|-----------------|----------------------------|
| 減速比 Reduction Ratio (1/i) | 無負荷回転数 No-Load Speed min ⁻¹ | 定格回転数 Rated Speed min ⁻¹ | 定格トルク Rated Torque | 起動トルク Starting Torque mNm | 長さ(L) Length mm | 回転方向 Direction of rotation |
| 4 | 1490 | 1250 | 5.39 0.06 0.764 | (33.5) | 42.4 | CW |
| 15 | 430 | 363 | 14.7 0.15 2.08 | (94.3) | 42.4 | CW |
| 23 | 281 | 242 | 19.6 0.20 2.78 | (141) | 42.4 | CW |
| 61 | 109 | 92.8 | 44.1 0.45 6.25 | (297) | 45.6 | CW |
| 107 | 62.3 | 52.3 | 83.4 0.85 11.8 | (520) | 45.6 | CW |
| 242 | 27.6 | 23.3 | 147 1.5 20.8 | (944) | 48.8 | CW |
| 326 | 20.5 | 18.2 | 147 1.5 20.8 | (1310) | 48.8 | CW |
| 410 | 16.3 | 14.3 | 196 2.0 27.8 | (1597) | 48.8 | CW |
| 483 | 13.8 | 12.4 | 196 2.0 27.8 | (1932) | 48.8 | CW |

| IG-16GM-SRU2505A-12 DC12V | | 起動電流 Starting current 1310mA | | | | |
|---------------------------|--|-------------------------------------|--------------------|---------------------------|-----------------|----------------------------|
| 減速比 Reduction Ratio (1/i) | 無負荷回転数 No-Load Speed min ⁻¹ | 定格回転数 Rated Speed min ⁻¹ | 定格トルク Rated Torque | 起動トルク Starting Torque mNm | 長さ(L) Length mm | 回転方向 Direction of rotation |
| 4 | 2220 | 1910 | 6.86 0.07 0.972 | (49.1) | 42.4 | CW |
| 15 | 640 | 551 | 19.6 0.20 2.78 | (141) | 42.4 | CW |
| 23 | 418 | 361 | 29.4 0.30 4.17 | (216) | 42.4 | CW |
| 61 | 162 | 139 | 63.7 0.65 9.03 | (449) | 45.6 | CW |
| 107 | 92.8 | 81.2 | 98.1 1.0 13.9 | (785) | 45.6 | CW |
| 242 | 41.1 | 36.9 | 147 1.5 20.8 | (1439) | 48.8 | CW |
| 326 | 30.6 | 28.2 | 147 1.5 20.8 | (1874) | 48.8 | CW |
| 410 | 24.3 | 22.4 | 196 2.0 27.8 | (2507) | 48.8 | CW |
| 483 | 20.6 | 19.2 | 196 2.0 27.8 | (2884) | 48.8 | CW |

| IG-16GM-SRU2506A-12 DC12V | | 起動電流 Starting current 877mA | | | | |
|---------------------------|--|-------------------------------------|--------------------|---------------------------|-----------------|----------------------------|
| 減速比 Reduction Ratio (1/i) | 無負荷回転数 No-Load Speed min ⁻¹ | 定格回転数 Rated Speed min ⁻¹ | 定格トルク Rated Torque | 起動トルク Starting Torque mNm | 長さ(L) Length mm | 回転方向 Direction of rotation |
| 4 | 1860 | 1530 | 6.86 0.07 0.972 | (38.7) | 42.4 | CW |
| 15 | 536 | 441 | 19.6 0.20 2.78 | (111) | 42.4 | CW |
| 23 | 350 | 289 | 29.4 0.30 4.17 | (169) | 42.4 | CW |
| 61 | 136 | 111 | 63.7 0.65 9.03 | (347) | 45.6 | CW |
| 107 | 77.7 | 65.2 | 98.1 1.0 13.9 | (610) | 45.6 | CW |
| 242 | 34.4 | 29.9 | 147 1.5 20.8 | (1124) | 48.8 | CW |
| 326 | 25.6 | 23.1 | 147 1.5 20.8 | (1505) | 48.8 | CW |
| 410 | 20.4 | 18.3 | 196 2.0 27.8 | (1904) | 48.8 | CW |
| 483 | 17.3 | 15.7 | 196 2.0 27.8 | (2119) | 48.8 | CW |

| IG-16GM-SRU2507A-12 DC12V | | 起動電流 Starting current 610mA | | | | |
|---------------------------|--|-------------------------------------|--------------------|---------------------------|-----------------|----------------------------|
| 減速比 Reduction Ratio (1/i) | 無負荷回転数 No-Load Speed min ⁻¹ | 定格回転数 Rated Speed min ⁻¹ | 定格トルク Rated Torque | 起動トルク Starting Torque mNm | 長さ(L) Length mm | 回転方向 Direction of rotation |
| 4 | 1490 | 1200 | 6.37 0.065 0.903 | (32.7) | 42.4 | CW |
| 15 | 430 | 363 | 14.7 0.15 2.08 | (94.3) | 42.4 | CW |
| 23 | 281 | 233 | 24.5 0.25 3.47 | (143) | 42.4 | CW |
| 61 | 109 | 89.2 | 53.9 0.55 7.64 | (297) | 45.6 | CW |
| 107 | 62.4 | 50.6 | 98.1 1.0 13.9 | (519) | 45.6 | CW |
| 242 | 27.6 | 23.3 | 147 1.5 20.8 | (944) | 48.8 | CW |
| 326 | 20.5 | 18.2 | 147 1.5 20.8 | (1310) | 48.8 | CW |
| 410 | 16.4 | 14.4 | 196 2.0 27.8 | (1607) | 48.8 | CW |
| 483 | 13.9 | 12.4 | 196 2.0 27.8 | (1816) | 48.8 | CW |

| IG-16GM-SRU2508A-24 DC24V | | 起動電流 Starting current 756mA | | | | |
|---------------------------|--|-------------------------------------|--------------------|---------------------------|-----------------|----------------------------|
| 減速比 Reduction Ratio (1/i) | 無負荷回転数 No-Load Speed min ⁻¹ | 定格回転数 Rated Speed min ⁻¹ | 定格トルク Rated Torque | 起動トルク Starting Torque mNm | 長さ(L) Length mm | 回転方向 Direction of rotation |
| 4 | 2430 | 2110 | 6.86 0.07 0.972 | (52.1) | 42.4 | CW |
| 15 | 702 | 607 | 19.6 0.20 2.78 | (145) | 42.4 | CW |
| 23 | 458 | 397 | 29.4 0.30 4.17 | (221) | 42.4 | CW |
| 61 | 178 | 153 | 63.7 0.65 9.03 | (454) | 45.6 | CW |
| 107 | 102 | 89.3 | 98.1 1.0 13.9 | (788) | 45.6 | CW |
| 242 | 45.1 | 40.5 | 147 1.5 20.8 | (1441) | 48.8 | CW |
| 326 | 33.5 | 31.0 | 147 1.5 20.8 | (1970) | 48.8 | CW |
| 410 | 26.7 | 24.6 | 196 2.0 27.8 | (2492) | 48.8 | CW |
| 483 | 22.6 | 21.1 | 196 2.0 27.8 | (2953) | 48.8 | CW |

| IG-16GM-SRU2509A-24 DC24V | | 起動電流 Starting current 448mA | | | | |
|---------------------------|--|-------------------------------------|--------------------|---------------------------|-----------------|----------------------------|
| 減速比 Reduction Ratio (1/i) | 無負荷回転数 No-Load Speed min ⁻¹ | 定格回転数 Rated Speed min ⁻¹ | 定格トルク Rated Torque | 起動トルク Starting Torque mNm | 長さ(L) Length mm | 回転方向 Direction of rotation |
| 4 | 1800 | 1500 | 6.86 0.07 0.972 | (41.2) | 42.4 | CW |
| 15 | 521 | 432 | 19.6 0.20 2.78 | (115) | 42.4 | CW |
| 23 | 340 | 283 | 29.4 0.30 4.17 | (175) | 42.4 | CW |
| 61 | 132 | 109 | 63.7 0.65 9.03 | (366) | 45.6 | CW |
| 107 | 75.6 | 63.9 | 98.1 1.0 13.9 | (634) | 45.6 | CW |
| 242 | 33.4 | 29.2 | 147 1.5 20.8 | (1169) | 48.8 | CW |
| 326 | 24.9 | 22.5 | 147 1.5 20.8 | (1525) | 48.8 | CW |
| 410 | 19.8 | 17.8 | 196 2.0 27.8 | (1940) | 48.8 | CW |
| 483 | 16.8 | 15.4 | 196 2.0 27.8 | (2352) | 48.8 | CW |

標準品 Standard 1. 上記データは参考値です。
 特注品 Custom-made 2. 上記スペックは一例で、要望スペックにて承ります。

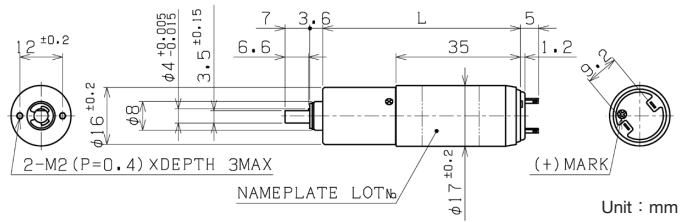
The above data is for reference only.
 The above specifications are an example and your specifications are welcomed.

φ 17ギヤードモータ Gear Motor

コアレスモータ Coreless Motor

コアレスモータ Coreless Motor **SCR17-35 × ×** page49

遊星ギヤヘッド Planetary Gearhead **IG-16** page69



| IG-16GM-SRU3551B-06 DC6V | | 起動電流 Starting current 1040mA | | | | | | |
|------------------------------|---|--|-----------------------|-------|-------|------------------------------|--------------------|-------------------------------|
| 減速比 Reduction Ratio (1/i) | 無負荷回転数 No-Load Speed min ⁻¹ | 定格回転数 Rated Speed min ⁻¹ | 定格トルク Rated Torque | | | 起動トルク Starting Torque mNm | 長さ(L) Length mm | 回転方向 Direction of rotation |
| | | | mNm | kg·cm | oz·in | | | |
| 4 | 1030 | 788 | 9.81 | 0.10 | 1.39 | (41.8) | 52.4 | CW |
| 15 | 299 | 223 | 29.4 | 0.30 | 4.17 | (116) | 52.4 | CW |
| 23 | 195 | 147 | 44.1 | 0.45 | 6.25 | (179) | 52.4 | CW |
| 61 | 75.7 | 56.5 | 93.2 | 0.95 | 13.2 | (367) | 55.6 | CW |
| 107 | 43.3 | 36.7 | 98.1 | 1.0 | 13.9 | (644) | 55.6 | CW |
| 242 | 19.2 | 16.8 | 147 | 1.5 | 20.8 | (1176) | 58.8 | CW |
| 326 | 14.3 | 12.9 | 147 | 1.5 | 20.8 | (1502) | 58.8 | CW |
| 410 | 11.4 | 10.2 | 196 | 2.0 | 27.8 | (1862) | 58.8 | CW |
| 483 | 9.63 | 8.82 | 196 | 2.0 | 27.8 | (2330) | 58.8 | CW |

| IG-16GM-SRU3552B-06 DC6V | | 起動電流 Starting current 827mA | | | | | | |
|------------------------------|---|--|-----------------------|-------|-------|------------------------------|--------------------|-------------------------------|
| 減速比 Reduction Ratio (1/i) | 無負荷回転数 No-Load Speed min ⁻¹ | 定格回転数 Rated Speed min ⁻¹ | 定格トルク Rated Torque | | | 起動トルク Starting Torque mNm | 長さ(L) Length mm | 回転方向 Direction of rotation |
| | | | mNm | kg·cm | oz·in | | | |
| 4 | 864 | 670 | 8.83 | 0.09 | 1.25 | (39.3) | 52.4 | CW |
| 15 | 250 | 194 | 24.5 | 0.25 | 3.47 | (109) | 52.4 | CW |
| 23 | 163 | 125 | 39.2 | 0.4 | 5.56 | (168) | 52.4 | CW |
| 61 | 63.2 | 49.1 | 78.5 | 0.8 | 11.1 | (352) | 55.6 | CW |
| 107 | 36.2 | 30.4 | 98.1 | 1.0 | 13.9 | (612) | 55.6 | CW |
| 242 | 16.0 | 13.9 | 147 | 1.5 | 20.8 | (1120) | 58.8 | CW |
| 326 | 11.9 | 10.8 | 147 | 1.5 | 20.8 | (1590) | 58.8 | CW |
| 410 | 9.48 | 8.51 | 196 | 2.0 | 27.8 | (1916) | 58.8 | CW |
| 483 | 8.04 | 7.34 | 196 | 2.0 | 27.8 | (2251) | 58.8 | CW |

| IG-16GM-SRU3551B-12 DC12V | | 起動電流 Starting current 2270mA | | | | | | |
|------------------------------|---|--|-----------------------|-------|-------|------------------------------|--------------------|-------------------------------|
| 減速比 Reduction Ratio (1/i) | 無負荷回転数 No-Load Speed min ⁻¹ | 定格回転数 Rated Speed min ⁻¹ | 定格トルク Rated Torque | | | 起動トルク Starting Torque mNm | 長さ(L) Length mm | 回転方向 Direction of rotation |
| | | | mNm | kg·cm | oz·in | | | |
| 4 | 2140 | 1910 | 9.81 | 0.10 | 1.39 | (91.3) | 52.4 | CW |
| 15 | 619 | 549 | 29.4 | 0.30 | 4.17 | (260) | 52.4 | CW |
| 23 | 404 | 359 | 44.1 | 0.45 | 6.25 | (396) | 52.4 | CW |
| 61 | 157 | 139 | 93.2 | 0.95 | 13.2 | (813) | 55.6 | CW |
| 107 | 89.7 | 83.6 | 98.1 | 1.0 | 13.9 | (1443) | 55.6 | CW |
| 242 | 39.7 | 37.5 | 147 | 1.5 | 20.8 | (2653) | 58.8 | CW |
| 326 | 29.5 | 28.3 | 147 | 1.5 | 20.8 | (3614) | 58.8 | CW |
| 410 | 23.5 | 22.5 | 196 | 2.0 | 27.8 | (4606) | 58.8 | CW |
| 483 | 19.9 | 19.2 | 196 | 2.0 | 27.8 | (5572) | 58.8 | CW |

| IG-16GM-SRU3553B-12 DC12V | | 起動電流 Starting current 1310mA | | | | | | |
|------------------------------|---|--|-----------------------|-------|-------|------------------------------|--------------------|-------------------------------|
| 減速比 Reduction Ratio (1/i) | 無負荷回転数 No-Load Speed min ⁻¹ | 定格回転数 Rated Speed min ⁻¹ | 定格トルク Rated Torque | | | 起動トルク Starting Torque mNm | 長さ(L) Length mm | 回転方向 Direction of rotation |
| | | | mNm | kg·cm | oz·in | | | |
| 4 | 1570 | 1240 | 14.7 | 0.15 | 2.08 | (69.9) | 52.4 | CW |
| 15 | 454 | 352 | 44.1 | 0.45 | 6.25 | (196) | 52.4 | CW |
| 23 | 297 | 248 | 49.0 | 0.50 | 6.95 | (297) | 52.4 | CW |
| 61 | 115 | 96.9 | 98.1 | 1.0 | 13.9 | (623) | 55.6 | CW |
| 107 | 65.9 | 59.9 | 98.1 | 1.0 | 13.9 | (1077) | 55.6 | CW |
| 242 | 29.2 | 27.0 | 147 | 1.5 | 20.8 | (1951) | 58.8 | CW |
| 326 | 21.7 | 20.5 | 147 | 1.5 | 20.8 | (2658) | 58.8 | CW |
| 410 | 17.3 | 16.3 | 196 | 2.0 | 27.8 | (3391) | 58.8 | CW |
| 483 | 14.6 | 13.9 | 196 | 2.0 | 27.8 | (4088) | 58.8 | CW |

| IG-16GM-SRU3554B-12 DC12V | | 起動電流 Starting current 951mA | | | | | | |
|------------------------------|---|--|-----------------------|-------|-------|------------------------------|--------------------|-------------------------------|
| 減速比 Reduction Ratio (1/i) | 無負荷回転数 No-Load Speed min ⁻¹ | 定格回転数 Rated Speed min ⁻¹ | 定格トルク Rated Torque | | | 起動トルク Starting Torque mNm | 長さ(L) Length mm | 回転方向 Direction of rotation |
| | | | mNm | kg·cm | oz·in | | | |
| 4 | 1290 | 1090 | 9.81 | 0.10 | 1.39 | (63.3) | 52.4 | CW |
| 15 | 373 | 291 | 39.2 | 0.40 | 5.56 | (178) | 52.4 | CW |
| 23 | 243 | 200 | 49.0 | 0.50 | 6.95 | (277) | 52.4 | CW |
| 61 | 94.4 | 78.1 | 98.1 | 1.0 | 13.9 | (568) | 55.6 | CW |
| 107 | 54.0 | 48.7 | 98.1 | 1.0 | 13.9 | (1000) | 55.6 | CW |
| 242 | 23.9 | 22.0 | 147 | 1.5 | 20.8 | (1849) | 58.8 | CW |
| 326 | 17.8 | 16.7 | 147 | 1.5 | 20.8 | (2379) | 58.8 | CW |
| 410 | 14.2 | 13.3 | 196 | 2.0 | 27.8 | (3092) | 58.8 | CW |
| 483 | 12.0 | 11.4 | 196 | 2.0 | 27.8 | (3920) | 58.8 | CW |

| IG-16GM-SRU3560B-24 DC24V | | 起動電流 Starting current 855mA | | | | | | |
|------------------------------|---|--|-----------------------|-------|-------|------------------------------|--------------------|-------------------------------|
| 減速比 Reduction Ratio (1/i) | 無負荷回転数 No-Load Speed min ⁻¹ | 定格回転数 Rated Speed min ⁻¹ | 定格トルク Rated Torque | | | 起動トルク Starting Torque mNm | 長さ(L) Length mm | 回転方向 Direction of rotation |
| | | | mNm | kg·cm | oz·in | | | |
| 4 | 1840 | 1590 | 9.81 | 0.10 | 1.39 | (72.2) | 52.4 | CW |
| 15 | 530 | 430 | 39.2 | 0.40 | 5.56 | (208) | 52.4 | CW |
| 23 | 346 | 293 | 49.0 | 0.50 | 6.95 | (320) | 52.4 | CW |
| 61 | 134 | 114 | 98.1 | 1.0 | 13.9 | (657) | 55.6 | CW |
| 107 | 76.9 | 70.3 | 98.1 | 1.0 | 13.9 | (1143) | 55.6 | CW |
| 242 | 34.0 | 31.7 | 147 | 1.5 | 20.8 | (2173) | 58.8 | CW |
| 326 | 25.3 | 24.0 | 147 | 1.5 | 20.8 | (2861) | 58.8 | CW |
| 410 | 20.1 | 19.0 | 196 | 2.0 | 27.8 | (3581) | 58.8 | CW |
| 483 | 17.1 | 16.3 | 196 | 2.0 | 27.8 | (4190) | 58.8 | CW |

| IG-16GM-SRU3557B-24 DC24V | | 起動電流 Starting current 692mA | | | | | | |
|------------------------------|---|--|-----------------------|-------|-------|------------------------------|--------------------|-------------------------------|
| 減速比 Reduction Ratio (1/i) | 無負荷回転数 No-Load Speed min ⁻¹ | 定格回転数 Rated Speed min ⁻¹ | 定格トルク Rated Torque | | | 起動トルク Starting Torque mNm | 長さ(L) Length mm | 回転方向 Direction of rotation |
| | | | mNm | kg·cm | oz·in | | | |
| 4 | 1510 | 1230 | 14.7 | 0.15 | 2.08 | (79.3) | 52.4 | CW |
| 15 | 437 | 350 | 44.1 | 0.45 | 6.25 | (222) | 52.4 | CW |
| 23 | 285 | 244 | 49.0 | 0.50 | 6.95 | (341) | 52.4 | CW |
| 61 | 111 | 95.2 | 98.1 | 1.0 | 13.9 | (689) | 55.6 | CW |
| 107 | 63.4 | 58.3 | 98.1 | 1.0 | 13.9 | (1220) | 55.6 | CW |
| 242 | 28.1 | 26.2 | 147 | 1.5 | 20.8 | (2174) | 58.8 | CW |
| 326 | 20.9 | 19.8 | 147 | 1.5 | 20.8 | (2793) | 58.8 | CW |
| 410 | 16.6 | 15.8 | 196 | 2.0 | 27.8 | (4067) | 58.8 | CW |
| 483 | 14.1 | 13.5 | 196 | 2.0 | 27.8 | (4606) | 58.8 | CW |

| IG-16GM-SRU3554B-24 DC24V | | 起動電流 Starting current 2020mA | | | | | | |
|------------------------------|---|--|-----------------------|-------|-------|------------------------------|--------------------|-------------------------------|
| 減速比 Reduction Ratio (1/i) | 無負荷回転数 No-Load Speed min ⁻¹ | 定格回転数 Rated Speed min ⁻¹ | 定格トルク Rated Torque | | | 起動トルク Starting Torque mNm | 長さ(L) Length mm | 回転方向 Direction of rotation |
| | | | mNm | kg·cm | oz·in | | | |
| 4 | 2520 | 2360 | 9.81 | 0.10 | 1.39 | (155) | 52.4 | CW |
| 15 | 728 | 660 | 39.2 | 0.40 | 5.56 | (420) | 52.4 | CW |
| 23 | 475 | 439 | 49.0 | 0.50 | 6.95 | (647) | 52.4 | CW |
| 61 | 184 | 171 | 98.1 | 1.0 | 13.9 | (1388) | 55.6 | CW |
| 107 | 105 | 101 | 98.1 | 1.0 | 13.9 | (2575) | 55.6 | CW |
| 242 | 46.7 | 45.1 | 147 | 1.5 | 20.8 | (4291) | 58.8 | CW |
| 326 | 34.7 | 33.8 | 147 | 1.5 | 20.8 | (5668) | 58.8 | CW |
| 410 | 27.7 | 26.9 | 196 | 2.0 | 27.8 | (6786) | 58.8 | CW |
| 483 | 23.4 | 22.9 | 196 | 2.0 | 27.8 | (9173) | 58.8 | CW |

標準品 Standard
特注品 Custom-made

1. 上記データは参考値です。
2. 上記スペックは一例で、要望スペックにて承ります。

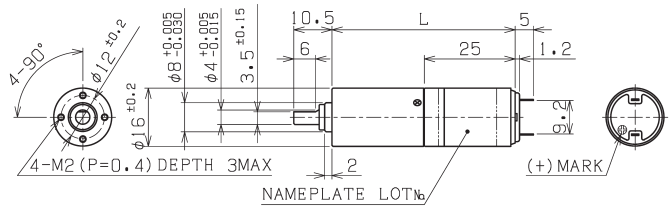
The above data is for reference only.
The above specifications are an example and your specifications are welcomed.

φ 16ギヤードモータ Gear Motor

コアレスモータ Coreless Motor

コアレスモータ Coreless Motor **SCR16-25 × ×** page46

遊星ギヤヘッド Planetary Gearhead **IG-16V** page70



| IG-16VM-SR2503A-06 DC6V | | 起動電流 Starting current 319mA | | | | | | |
|------------------------------|---|--|-----------------------|-------|--------------|------------------------------|--------------------|-------------------------------|
| 減速比 Reduction Ratio (1/i) | 無負荷回転数 No-Load Speed min ⁻¹ | 定格回転数 Rated Speed min ⁻¹ | 定格トルク Rated Torque | | | 起動トルク Starting Torque mNm | 長さ(L) Length mm | 回転方向 Direction of rotation |
| | | | mNm | kg·cm | oz·in | | | |
| 19 | 276 | 230 | 5.88 | 0.060 | 0.834 (35.3) | 43.2 | CW | |
| 23 | 224 | 186 | 7.35 | 0.075 | 1.04 (43.3) | 43.2 | CW | |
| 29 | 182 | 150 | 9.32 | 0.095 | 1.32 (53.0) | 43.2 | CW | |
| 84 | 62.9 | 53.0 | 19.6 | 0.20 | 2.78 (125) | 46.8 | CW | |
| 103 | 51.1 | 42.9 | 24.5 | 0.25 | 3.47 (153) | 46.8 | CW | |
| 127 | 41.5 | 35.0 | 29.4 | 0.30 | 4.17 (188) | 46.8 | CW | |
| 157 | 33.7 | 28.0 | 39.2 | 0.40 | 5.56 (232) | 46.8 | CW | |
| 369 | 14.3 | 12.0 | 73.5 | 0.75 | 10.4 (457) | 50.4 | CW | |
| 455 | 11.6 | 9.66 | 93.2 | 0.95 | 13.2 (557) | 50.4 | CW | |
| 560 | 9.46 | 7.81 | 118 | 1.2 | 16.7 (677) | 50.4 | CW | |
| 690 | 7.68 | 6.41 | 137 | 1.4 | 19.4 (828) | 50.4 | CW | |
| 850 | 6.24 | 5.16 | 177 | 1.8 | 25.0 (1023) | 50.4 | CW | |

| IG-16VM-SR2506A-06 DC6V | | 起動電流 Starting current 612mA | | | | | | |
|------------------------------|---|--|-----------------------|-------|-------------|------------------------------|--------------------|-------------------------------|
| 減速比 Reduction Ratio (1/i) | 無負荷回転数 No-Load Speed min ⁻¹ | 定格回転数 Rated Speed min ⁻¹ | 定格トルク Rated Torque | | | 起動トルク Starting Torque mNm | 長さ(L) Length mm | 回転方向 Direction of rotation |
| | | | mNm | kg·cm | oz·in | | | |
| 19 | 334 | 294 | 7.35 | 0.075 | 1.04 (61.4) | 43.2 | CW | |
| 23 | 271 | 239 | 8.83 | 0.090 | 1.25 (74.8) | 43.2 | CW | |
| 29 | 220 | 197 | 9.81 | 0.10 | 1.39 (93.8) | 43.2 | CW | |
| 84 | 76.0 | 67.4 | 24.5 | 0.25 | 3.47 (217) | 46.8 | CW | |
| 103 | 61.7 | 54.9 | 29.4 | 0.30 | 4.17 (267) | 46.8 | CW | |
| 127 | 50.1 | 44.1 | 39.2 | 0.40 | 5.56 (327) | 46.8 | CW | |
| 157 | 40.7 | 35.8 | 49.0 | 0.50 | 6.95 (407) | 46.8 | CW | |
| 369 | 17.3 | 15.2 | 93.2 | 0.95 | 13.2 (768) | 50.4 | CW | |
| 455 | 14.1 | 12.5 | 108 | 1.1 | 15.3 (952) | 50.4 | CW | |
| 560 | 11.4 | 10.1 | 137 | 1.4 | 19.4 (1201) | 50.4 | CW | |
| 690 | 9.28 | 8.21 | 167 | 1.7 | 23.6 (1448) | 50.4 | CW | |
| 850 | 7.54 | 6.66 | 206 | 2.1 | 29.2 (1765) | 50.4 | CW | |

| IG-16VM-SR2501A-06 DC6V | | 起動電流 Starting current 722mA | | | | | | |
|------------------------------|---|--|-----------------------|-------|-------------|------------------------------|--------------------|-------------------------------|
| 減速比 Reduction Ratio (1/i) | 無負荷回転数 No-Load Speed min ⁻¹ | 定格回転数 Rated Speed min ⁻¹ | 定格トルク Rated Torque | | | 起動トルク Starting Torque mNm | 長さ(L) Length mm | 回転方向 Direction of rotation |
| | | | mNm | kg·cm | oz·in | | | |
| 19 | 518 | 431 | 7.35 | 0.075 | 1.04 (43.8) | 43.2 | CW | |
| 23 | 420 | 351 | 8.83 | 0.090 | 1.25 (53.7) | 43.2 | CW | |
| 29 | 341 | 291 | 9.81 | 0.10 | 1.39 (66.9) | 43.2 | CW | |
| 84 | 118 | 99.2 | 24.5 | 0.25 | 3.47 (154) | 46.8 | CW | |
| 103 | 95.8 | 81.0 | 29.4 | 0.30 | 4.17 (190) | 46.8 | CW | |
| 127 | 77.8 | 64.7 | 39.2 | 0.40 | 5.56 (233) | 46.8 | CW | |
| 157 | 63.2 | 52.4 | 49.0 | 0.50 | 6.95 (287) | 46.8 | CW | |
| 369 | 26.9 | 22.3 | 93.2 | 0.95 | 13.2 (545) | 50.4 | CW | |
| 455 | 21.9 | 18.4 | 108 | 1.1 | 15.3 (676) | 50.4 | CW | |
| 560 | 17.7 | 14.8 | 137 | 1.4 | 19.4 (836) | 50.4 | CW | |
| 690 | 14.4 | 12.1 | 167 | 1.7 | 23.6 (1046) | 50.4 | CW | |
| 850 | 11.7 | 9.79 | 206 | 2.1 | 29.2 (1262) | 50.4 | CW | |

| IG-16VM-SR2504A-12 DC12V | | 起動電流 Starting current 219mA | | | | | | |
|------------------------------|---|--|-----------------------|-------|--------------|------------------------------|--------------------|-------------------------------|
| 減速比 Reduction Ratio (1/i) | 無負荷回転数 No-Load Speed min ⁻¹ | 定格回転数 Rated Speed min ⁻¹ | 定格トルク Rated Torque | | | 起動トルク Starting Torque mNm | 長さ(L) Length mm | 回転方向 Direction of rotation |
| | | | mNm | kg·cm | oz·in | | | |
| 19 | 371 | 307 | 5.88 | 0.060 | 0.834 (34.1) | 43.2 | CW | |
| 23 | 301 | 248 | 7.35 | 0.075 | 1.04 (41.7) | 43.2 | CW | |
| 29 | 245 | 201 | 9.32 | 0.095 | 1.32 (51.9) | 43.2 | CW | |
| 84 | 84.6 | 70.8 | 19.6 | 0.20 | 2.78 (120) | 46.8 | CW | |
| 103 | 68.7 | 57.3 | 24.5 | 0.25 | 3.47 (148) | 46.8 | CW | |
| 127 | 55.8 | 46.8 | 29.4 | 0.30 | 4.17 (182) | 46.8 | CW | |
| 157 | 45.3 | 37.4 | 39.2 | 0.40 | 5.56 (225) | 46.8 | CW | |
| 369 | 19.3 | 16.0 | 73.5 | 0.75 | 10.4 (430) | 50.4 | CW | |
| 455 | 15.7 | 12.9 | 93.2 | 0.95 | 13.2 (523) | 50.4 | CW | |
| 560 | 12.7 | 10.4 | 118 | 1.2 | 16.7 (652) | 50.4 | CW | |
| 690 | 10.3 | 8.55 | 137 | 1.4 | 19.4 (806) | 50.4 | CW | |
| 850 | 8.39 | 6.88 | 177 | 1.8 | 25.0 (983) | 50.4 | CW | |

| IG-16VM-SR2502A-12 DC12V | | 起動電流 Starting current 436mA | | | | | | |
|------------------------------|---|--|-----------------------|-------|-------------|------------------------------|--------------------|-------------------------------|
| 減速比 Reduction Ratio (1/i) | 無負荷回転数 No-Load Speed min ⁻¹ | 定格回転数 Rated Speed min ⁻¹ | 定格トルク Rated Torque | | | 起動トルク Starting Torque mNm | 長さ(L) Length mm | 回転方向 Direction of rotation |
| | | | mNm | kg·cm | oz·in | | | |
| 19 | 516 | 424 | 9.81 | 0.10 | 1.39 (55.0) | 43.2 | CW | |
| 23 | 419 | 358 | 9.81 | 0.10 | 1.39 (67.4) | 43.2 | CW | |
| 29 | 340 | 280 | 14.7 | 0.15 | 2.08 (83.3) | 43.2 | CW | |
| 84 | 118 | 96.8 | 34.3 | 0.35 | 4.86 (191) | 46.8 | CW | |
| 103 | 95.6 | 79.8 | 39.2 | 0.40 | 5.56 (237) | 46.8 | CW | |
| 127 | 77.6 | 64.6 | 49.0 | 0.50 | 6.95 (292) | 46.8 | CW | |
| 157 | 63.0 | 51.9 | 63.7 | 0.65 | 9.03 (362) | 46.8 | CW | |
| 369 | 26.9 | 22.3 | 118 | 1.2 | 16.7 (690) | 50.4 | CW | |
| 455 | 21.8 | 18.0 | 147 | 1.5 | 20.8 (843) | 50.4 | CW | |
| 560 | 17.7 | 14.5 | 186 | 1.9 | 26.4 (1029) | 50.4 | CW | |
| 690 | 14.4 | 11.9 | 226 | 2.3 | 32.0 (1302) | 50.4 | CW | |
| 850 | 11.7 | 9.57 | 284 | 2.9 | 40.3 (1560) | 50.4 | CW | |

| IG-16VM-SR2512A-12 DC12V | | 起動電流 Starting current 1400mA | | | | | | |
|------------------------------|---|--|-----------------------|-------|-------------|------------------------------|--------------------|-------------------------------|
| 減速比 Reduction Ratio (1/i) | 無負荷回転数 No-Load Speed min ⁻¹ | 定格回転数 Rated Speed min ⁻¹ | 定格トルク Rated Torque | | | 起動トルク Starting Torque mNm | 長さ(L) Length mm | 回転方向 Direction of rotation |
| | | | mNm | kg·cm | oz·in | | | |
| 19 | 807 | 709 | 14.7 | 0.15 | 2.08 (121) | 43.2 | CW | |
| 23 | 655 | 569 | 19.6 | 0.20 | 2.78 (149) | 43.2 | CW | |
| 29 | 532 | 461 | 24.5 | 0.25 | 3.47 (184) | 43.2 | CW | |
| 84 | 184 | 157 | 63.7 | 0.65 | 9.03 (434) | 46.8 | CW | |
| 103 | 150 | 127 | 78.5 | 0.8 | 11.1 (512) | 46.8 | CW | |
| 127 | 121 | 103 | 98.1 | 1.0 | 13.9 (659) | 46.8 | CW | |
| 157 | 98.6 | 84.0 | 118 | 1.2 | 16.7 (797) | 46.8 | CW | |
| 369 | 42.0 | 35.7 | 226 | 2.3 | 32.0 (1507) | 50.4 | CW | |
| 455 | 34.1 | 28.9 | 284 | 2.9 | 40.3 (1862) | 50.4 | CW | |
| 560 | 27.7 | 23.4 | 353 | 3.6 | 50.0 (2274) | 50.4 | CW | |
| 690 | 22.5 | 19.0 | 431 | 4.4 | 61.1 (2771) | 50.4 | CW | |
| 850 | 18.3 | 15.7 | 490 | 5.0 | 69.5 (3449) | 50.4 | CW | |

| IG-16VM-SR2507A-24 DC24V | | 起動電流 Starting current 359mA | | | | | | |
|------------------------------|---|--|-----------------------|-------|-------------|------------------------------|--------------------|-------------------------------|
| 減速比 Reduction Ratio (1/i) | 無負荷回転数 No-Load Speed min ⁻¹ | 定格回転数 Rated Speed min ⁻¹ | 定格トルク Rated Torque | | | 起動トルク Starting Torque mNm | 長さ(L) Length mm | 回転方向 Direction of rotation |
| | | | mNm | kg·cm | oz·in | | | |
| 19 | 630 | 548 | 9.81 | 0.10 | 1.39 (75.4) | 43.2 | CW | |
| 23 | 511 | 430 | 14.7 | 0.15 | 2.08 (92.7) | 43.2 | CW | |
| 29 | 415 | 361 | 14.7 | 0.15 | 2.08 (113) | 43.2 | CW | |
| 84 | 144 | 122 | 39.2 | 0.40 | 5.56 (257) | 46.8 | CW | |
| 103 | 117 | 97.3 | 53.9 | 0.55 | 7.64 (320) | 46.8 | CW | |
| 127 | 94.6 | 79.6 | 63.7 | 0.65 | 9.03 (402) | 46.8 | CW | |
| 157 | 76.8 | 64.7 | 78.5 | 0.8 | 11.1 (498) | 46.8 | CW | |
| 369 | 32.7 | 27.6 | 147 | 1.5 | 20.8 (943) | 50.4 | CW | |
| 455 | 26.6 | 22.3 | 186 | 1.9 | 26.4 (1151) | 50.4 | CW | |
| 560 | 21.6 | 18.0 | 235 | 2.4 | 33.3 (1410) | 50.4 | CW | |
| 690 | 17.5 | 14.7 | 284 | 2.9 | 40.3 (1775) | 50.4 | CW | |
| 850 | 14.2 | 11.9 | 353 | 3.6 | 50.0 (2179) | 50.4 | CW | |

| IG-16VM-SR2504A-12 DC12V | | 起動電流 Starting current 219mA | | | | | | |
|------------------------------|---|--|-----------------------|-------|--------------|------------------------------|--------------------|-------------------------------|
| 減速比 Reduction Ratio (1/i) | 無負荷回転数 No-Load Speed min ⁻¹ | 定格回転数 Rated Speed min ⁻¹ | 定格トルク Rated Torque | | | 起動トルク Starting Torque mNm | 長さ(L) Length mm | 回転方向 Direction of rotation |
| | | | mNm | kg·cm | oz·in | | | |
| 19 | 371 | 307 | 5.88 | 0.060 | 0.834 (34.1) | 43.2 | CW | |
| 23 | 301 | 248 | 7.35 | 0.075 | 1.04 (41.7) | 43.2 | CW | |
| 29 | 245 | 201 | 9.32 | 0.095 | 1.32 (51.9) | 43.2 | CW | |
| 84 | 84.6 | 70.8 | 19.6 | 0.20 | 2.78 (120) | 46.8 | CW | |
| 103 | 68.7 | 57.3 | 24.5 | 0.25 | 3.47 (148) | 46.8 | CW | |
| 127 | 55.8 | 46.8 | 29.4 | 0.30 | 4.17 (182) | 46.8 | CW | |
| 157 | 45.3 | 37.4 | 39.2 | 0.40 | 5.56 (225) | 46.8 | CW | |
| 369 | 19.3 | 16.0 | 73.5 | 0.75 | 10.4 (430) | 50.4 | CW | |
| 455 | 15.7 | 12.9 | 93.2 | 0.95 | 13.2 (523) | 50.4 | CW | |
| 560 | 12.7 | 10.4 | 118 | 1.2 | 16.7 (652) | 50.4 | CW | |
| 690 | 10.3 | 8.55 | 137 | 1.4 | 19.4 (806) | 50.4 | CW | |
| 850 | 8.39 | 6.88 | 177 | 1.8 | 25.0 (983) | 50.4 | CW | |

標準品 Standard
特注品 Custom-made

1. 上記データは参考値です。
2. 上記スペックは一例で、要望スペックにて承ります。

The above data is for reference only.
The above specifications are an example and your specifications are welcomed.

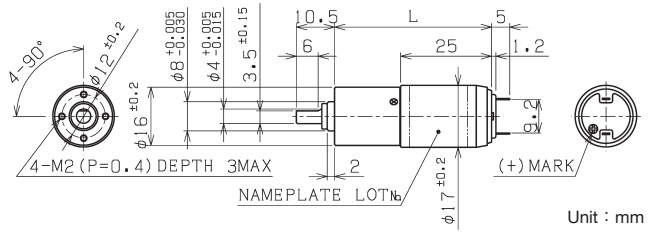
索引 INDEX
選定 Selection Guide
技術情報 Technical Information
Motor
コアレス Coreless
ブラシレス Brushless
ブラシレス Brushless
エンコーダ Encoder
磁気 Magnetic
光学 Optical
ギヤヘッド Gearhead
遊星 Planetary
スパー Spur
コアレス Coreless
コアレス Iron Core
ブラシレス Brushless

φ 17ギヤードモータ Gear Motor

コアレスモータ Coreless Motor

コアレスモータ Coreless Motor **SCR17-25 × ×** page48

遊星ギヤヘッド Planetary Gearhead **IG-16V** page70



| IG-16VM-SRU2501A-06 DC6V 起動電流 Starting current 2310mA | | | | | | | | | |
|---|---|--|-----------------------|-------|-------|----------------------------------|--------------------|-----------------------------------|--|
| 減速比 Reduction Ratio (1/i) | 無負荷 回転数 No-Load Speed min ⁻¹ | 定格 回転数 Rated Speed min ⁻¹ | 定格トルク Rated Torque | | | 起動 トルク Starting Torque mNm | 長さ(L) Length mm | 回転 方向 Direction of rotation | |
| | | | mNm | kg·cm | oz·in | | | | |
| 19 | 515 | 430 | 24.5 | 0.25 | 3.47 | (148) | 43.2 | CW | |
| 23 | 418 | 351 | 29.4 | 0.30 | 4.17 | (183) | 43.2 | CW | |
| 29 | 340 | 288 | 34.3 | 0.35 | 4.86 | (224) | 43.2 | CW | |
| 84 | 117 | 97.5 | 88.3 | 0.9 | 12.5 | (530) | 46.8 | CW | |
| 103 | 95.4 | 79.3 | 108 | 1.1 | 15.3 | (640) | 46.8 | CW | |
| 127 | 77.4 | 64.9 | 127 | 1.3 | 18.1 | (786) | 46.8 | CW | |
| 157 | 62.9 | 52.1 | 167 | 1.7 | 23.6 | (973) | 46.8 | CW | |
| 369 | 26.8 | 22.2 | 314 | 3.2 | 44.5 | (1829) | 50.4 | CW | |
| 455 | 21.7 | 18.1 | 382 | 3.9 | 54.2 | (2303) | 50.4 | CW | |
| 560 | 17.7 | 14.6 | 481 | 4.9 | 68.1 | (2746) | 50.4 | CW | |
| 690 | 14.3 | 12.3 | 490 | 5.0 | 69.5 | (3504) | 50.4 | CW | |
| 850 | 11.6 | 10.3 | 490 | 5.0 | 69.5 | (4372) | 50.4 | CW | |

| IG-16VM-SRU2502A-06 DC6V 起動電流 Starting current 1660mA | | | | | | | | | |
|---|---|--|-----------------------|-------|-------|----------------------------------|--------------------|-----------------------------------|--|
| 減速比 Reduction Ratio (1/i) | 無負荷 回転数 No-Load Speed min ⁻¹ | 定格 回転数 Rated Speed min ⁻¹ | 定格トルク Rated Torque | | | 起動 トルク Starting Torque mNm | 長さ(L) Length mm | 回転 方向 Direction of rotation | |
| | | | mNm | kg·cm | oz·in | | | | |
| 19 | 419 | 357 | 19.6 | 0.20 | 2.78 | (132) | 43.2 | CW | |
| 23 | 340 | 289 | 24.5 | 0.25 | 3.47 | (163) | 43.2 | CW | |
| 29 | 276 | 236 | 29.4 | 0.30 | 4.17 | (203) | 43.2 | CW | |
| 84 | 95.6 | 80.5 | 73.5 | 0.75 | 10.4 | (465) | 46.8 | CW | |
| 103 | 77.7 | 65.0 | 93.2 | 0.95 | 13.2 | (570) | 46.8 | CW | |
| 127 | 63.1 | 53.4 | 108 | 1.1 | 15.3 | (703) | 46.8 | CW | |
| 157 | 51.2 | 43.1 | 137 | 1.4 | 19.4 | (866) | 46.8 | CW | |
| 369 | 21.8 | 18.3 | 265 | 2.7 | 37.5 | (1651) | 50.4 | CW | |
| 455 | 17.7 | 14.9 | 324 | 3.3 | 45.8 | (2048) | 50.4 | CW | |
| 560 | 14.4 | 12.1 | 402 | 4.1 | 57.0 | (2517) | 50.4 | CW | |
| 690 | 11.7 | 9.82 | 490 | 5.0 | 69.5 | (3049) | 50.4 | CW | |
| 850 | 9.48 | 8.25 | 490 | 5.0 | 69.5 | (3777) | 50.4 | CW | |

| IG-16VM-SRU2503A-06 DC6V 起動電流 Starting current 1220mA | | | | | | | | | |
|---|---|--|-----------------------|-------|-------|----------------------------------|--------------------|-----------------------------------|--|
| 減速比 Reduction Ratio (1/i) | 無負荷 回転数 No-Load Speed min ⁻¹ | 定格 回転数 Rated Speed min ⁻¹ | 定格トルク Rated Torque | | | 起動 トルク Starting Torque mNm | 長さ(L) Length mm | 回転 方向 Direction of rotation | |
| | | | mNm | kg·cm | oz·in | | | | |
| 19 | 349 | 304 | 14.7 | 0.15 | 2.08 | (114) | 43.2 | CW | |
| 23 | 283 | 244 | 19.6 | 0.20 | 2.78 | (142) | 43.2 | CW | |
| 29 | 230 | 198 | 24.5 | 0.25 | 3.47 | (176) | 43.2 | CW | |
| 84 | 79.5 | 67.1 | 63.7 | 0.65 | 9.03 | (408) | 46.8 | CW | |
| 103 | 64.5 | 54.5 | 78.5 | 0.8 | 11.1 | (506) | 46.8 | CW | |
| 127 | 52.4 | 44.1 | 98.1 | 1.0 | 13.9 | (619) | 46.8 | CW | |
| 157 | 42.5 | 36.0 | 118 | 1.2 | 16.7 | (772) | 46.8 | CW | |
| 369 | 18.1 | 15.2 | 235 | 2.4 | 33.3 | (1467) | 50.4 | CW | |
| 455 | 14.7 | 12.4 | 284 | 2.9 | 40.3 | (1815) | 50.4 | CW | |
| 560 | 11.9 | 10.0 | 353 | 3.6 | 50.0 | (2211) | 50.4 | CW | |
| 690 | 9.70 | 8.12 | 441 | 4.5 | 62.5 | (2707) | 50.4 | CW | |
| 850 | 7.88 | 6.72 | 490 | 5.0 | 69.5 | (3329) | 50.4 | CW | |

| IG-16VM-SRU2505A-12 DC12V 起動電流 Starting current 1310mA | | | | | | | | | |
|--|---|--|-----------------------|-------|-------|----------------------------------|--------------------|-----------------------------------|--|
| 減速比 Reduction Ratio (1/i) | 無負荷 回転数 No-Load Speed min ⁻¹ | 定格 回転数 Rated Speed min ⁻¹ | 定格トルク Rated Torque | | | 起動 トルク Starting Torque mNm | 長さ(L) Length mm | 回転 方向 Direction of rotation | |
| | | | mNm | kg·cm | oz·in | | | | |
| 19 | 519 | 446 | 24.5 | 0.25 | 3.47 | (174) | 43.2 | CW | |
| 23 | 421 | 364 | 29.4 | 0.30 | 4.17 | (217) | 43.2 | CW | |
| 29 | 342 | 298 | 34.3 | 0.35 | 4.86 | (267) | 43.2 | CW | |
| 84 | 118 | 101 | 88.3 | 0.9 | 12.5 | (613) | 46.8 | CW | |
| 103 | 96.1 | 82.4 | 108 | 1.1 | 15.3 | (758) | 46.8 | CW | |
| 127 | 78.0 | 67.3 | 127 | 1.3 | 18.1 | (926) | 46.8 | CW | |
| 157 | 63.3 | 54.1 | 167 | 1.7 | 23.6 | (1149) | 46.8 | CW | |
| 369 | 27.0 | 23.1 | 314 | 3.2 | 44.5 | (2174) | 50.4 | CW | |
| 455 | 21.9 | 18.8 | 382 | 3.9 | 54.2 | (2699) | 50.4 | CW | |
| 560 | 17.8 | 15.2 | 481 | 4.9 | 68.1 | (3293) | 50.4 | CW | |
| 690 | 14.4 | 12.7 | 490 | 5.0 | 69.5 | (4151) | 50.4 | CW | |
| 850 | 11.7 | 10.6 | 490 | 5.0 | 69.5 | (5212) | 50.4 | CW | |

| IG-16VM-SRU2506A-12 DC12V 起動電流 Starting current 877mA | | | | | | | | | |
|---|---|--|-----------------------|-------|-------|----------------------------------|--------------------|-----------------------------------|--|
| 減速比 Reduction Ratio (1/i) | 無負荷 回転数 No-Load Speed min ⁻¹ | 定格 回転数 Rated Speed min ⁻¹ | 定格トルク Rated Torque | | | 起動 トルク Starting Torque mNm | 長さ(L) Length mm | 回転 方向 Direction of rotation | |
| | | | mNm | kg·cm | oz·in | | | | |
| 19 | 435 | 356 | 24.5 | 0.25 | 3.47 | (135) | 43.2 | CW | |
| 23 | 353 | 291 | 29.4 | 0.30 | 4.17 | (167) | 43.2 | CW | |
| 29 | 286 | 239 | 34.3 | 0.35 | 4.86 | (209) | 43.2 | CW | |
| 84 | 99.1 | 80.8 | 88.3 | 0.9 | 12.5 | (478) | 46.8 | CW | |
| 103 | 80.4 | 65.7 | 108 | 1.1 | 15.3 | (591) | 46.8 | CW | |
| 127 | 65.3 | 53.8 | 127 | 1.3 | 18.1 | (721) | 46.8 | CW | |
| 157 | 53.0 | 43.1 | 167 | 1.7 | 23.6 | (894) | 46.8 | CW | |
| 369 | 22.6 | 18.4 | 314 | 3.2 | 44.5 | (1690) | 50.4 | CW | |
| 455 | 18.3 | 15.0 | 382 | 3.9 | 54.2 | (2118) | 50.4 | CW | |
| 560 | 14.9 | 12.1 | 481 | 4.9 | 68.1 | (2560) | 50.4 | CW | |
| 690 | 12.1 | 10.2 | 490 | 5.0 | 69.5 | (3121) | 50.4 | CW | |
| 850 | 9.82 | 8.59 | 490 | 5.0 | 69.5 | (3912) | 50.4 | CW | |

| IG-16VM-SRU2507A-12 DC12V 起動電流 Starting current 610mA | | | | | | | | | |
|---|---|--|-----------------------|-------|-------|----------------------------------|--------------------|-----------------------------------|--|
| 減速比 Reduction Ratio (1/i) | 無負荷 回転数 No-Load Speed min ⁻¹ | 定格 回転数 Rated Speed min ⁻¹ | 定格トルク Rated Torque | | | 起動 トルク Starting Torque mNm | 長さ(L) Length mm | 回転 方向 Direction of rotation | |
| | | | mNm | kg·cm | oz·in | | | | |
| 19 | 349 | 290 | 19.6 | 0.20 | 2.78 | (116) | 43.2 | CW | |
| 23 | 283 | 234 | 24.5 | 0.25 | 3.47 | (142) | 43.2 | CW | |
| 29 | 230 | 185 | 34.3 | 0.35 | 4.86 | (175) | 43.2 | CW | |
| 84 | 79.6 | 64.2 | 78.5 | 0.8 | 11.1 | (406) | 46.8 | CW | |
| 103 | 64.6 | 51.9 | 98.1 | 1.0 | 13.9 | (499) | 46.8 | CW | |
| 127 | 52.5 | 42.4 | 118 | 1.2 | 16.7 | (613) | 46.8 | CW | |
| 157 | 42.6 | 34.3 | 147 | 1.5 | 20.8 | (754) | 46.8 | CW | |
| 369 | 18.1 | 14.6 | 284 | 2.9 | 40.3 | (1469) | 50.4 | CW | |
| 455 | 14.7 | 11.8 | 353 | 3.6 | 50.0 | (1789) | 50.4 | CW | |
| 560 | 12.0 | 9.61 | 431 | 4.4 | 61.1 | (2164) | 50.4 | CW | |
| 690 | 9.71 | 7.95 | 490 | 5.0 | 69.5 | (2703) | 50.4 | CW | |
| 850 | 7.89 | 6.72 | 490 | 5.0 | 69.5 | (3304) | 50.4 | CW | |

| IG-16VM-SRU2508A-24 DC24V 起動電流 Starting current 756mA | | | | | | | | | |
|---|---|--|-----------------------|-------|-------|----------------------------------|--------------------|-----------------------------------|--|
| 減速比 Reduction Ratio (1/i) | 無負荷 回転数 No-Load Speed min ⁻¹ | 定格 回転数 Rated Speed min ⁻¹ | 定格トルク Rated Torque | | | 起動 トルク Starting Torque mNm | 長さ(L) Length mm | 回転 方向 Direction of rotation | |
| | | | mNm | kg·cm | oz·in | | | | |
| 19 | 569 | 491 | 24.5 | 0.25 | 3.47 | (179) | 43.2 | CW | |
| 23 | 462 | 400 | 29.4 | 0.30 | 4.17 | (219) | 43.2 | CW | |
| 29 | 375 | 328 | 34.3 | 0.35 | 4.86 | (274) | 43.2 | CW | |
| 84 | 130 | 112 | 88.3 | 0.9 | 12.5 | (638) | 46.8 | CW | |
| 103 | 105 | 90.7 | 108 | 1.1 | 15.3 | (793) | 46.8 | CW | |
| 127 | 85.6 | 74.1 | 127 | 1.3 | 18.1 | (945) | 46.8 | CW | |
| 157 | 69.5 | 59.6 | 167 | 1.7 | 23.6 | (1172) | 46.8 | CW | |
| 369 | 29.6 | 25.4 | 314 | 3.2 | 44.5 | (2213) | 50.4 | CW | |
| 455 | 24.0 | 20.7 | 382 | 3.9 | 54.2 | (2778) | 50.4 | CW | |
| 560 | 19.5 | 16.7 | 481 | 4.9 | 68.1 | (3350) | 50.4 | CW | |
| 690 | 15.8 | 14.0 | 490 | 5.0 | 69.5 | (4301) | 50.4 | CW | |
| 850 | 12.9 | 11.6 | 490 | 5.0 | 69.5 | (4862) | 50.4 | CW | |

| IG-16VM-SRU2509A-24 DC24V 起動電流 Starting current 448mA | | | | | | | | | |
|---|---|--|-----------------------|-------|-------|----------------------------------|--------------------|-----------------------------------|--|
| 減速比 Reduction Ratio (1/i) | 無負荷 回転数 No-Load Speed min ⁻¹ | 定格 回転数 Rated Speed min ⁻¹ | 定格トルク Rated Torque | | | 起動 トルク Starting Torque mNm | 長さ(L) Length mm | 回転 方向 Direction of rotation | |
| | | | mNm | kg·cm | oz·in | | | | |
| 19 | 423 | 349 | 24.5 | 0.25 | 3.47 | (140) | 43.2 | CW | |
| 23 | 343 | 285 | 29.4 | 0.30 | 4.17 | (174) | 43.2 | CW | |
| 29 | 278 | 234 | 34.3 | 0.35 | 4.86 | (217) | 43.2 | CW | |
| 84 | 96.3 | 79.2 | 88.3 | 0.9 | 12.5 | (497) | 46.8 | CW | |
| 103 | 78.2 | 64.4 | 108 | 1.1 | 15.3 | (612) | 46.8 | CW | |
| 127 | 63.5 | 52.8 | 127 | 1.3 | 18.1 | (754) | 46.8 | CW | |
| 157 | 51.6 | 42.3 | 167 | 1.7 | 23.6 | (927) | 46.8 | CW | |
| 369 | 22.0 | 18.1 | 314 | 3.2 | 44.5 | (1771) | 50.4 | CW | |
| 455 | 17.8 | 14.7 | 382 | 3.9 | 54.2 | (2193) | 50.4 | CW | |
| 560 | 14.5 | 11.9 | 481 | 4.9 | 68.1 | (2683) | 50.4 | CW | |
| 690 | 11.8 | 10.0 | 490 | 5.0 | 69.5 | (3212) | 50.4 | CW | |
| 850 | 9.55 | 8.40 | 490 | 5.0 | 69.5 | (4069) | 50.4 | CW | |

標準品 Standard
特注品 Custom-made

1. 上記データは参考値です。
2. 上記スペックは一例で、要望スペックにて承ります。

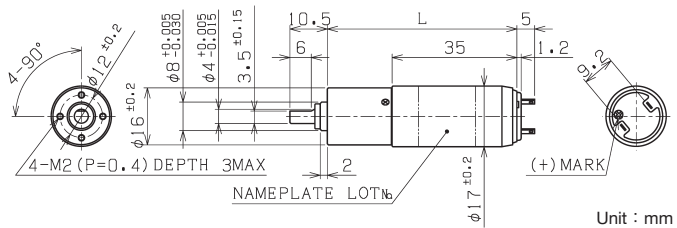
The above data is for reference only.
The above specifications are an example and your specifications are welcomed.

φ 17ギヤードモータ Gear Motor

コアレスモータ Coreless Motor

コアレスモータ Coreless Motor **SCR17-35 × ×** page49

遊星ギヤヘッド Planetary Gearhead **IG-16V** page70



Unit : mm

| IG-16VM-SRU3551B-06 DC6V | | 起動電流 Starting current 1040mA | | | | | | |
|------------------------------|---|--|-----------------------|-------|-------|------------------------------|--------------------|-------------------------------|
| 減速比 Reduction Ratio (1/i) | 無負荷回転数 No-Load Speed min ⁻¹ | 定格回転数 Rated Speed min ⁻¹ | 定格トルク Rated Torque | | | 起動トルク Starting Torque mNm | 長さ(L) Length mm | 回転方向 Direction of rotation |
| | | | mNm | kg·cm | oz·in | | | |
| 19 | 242 | 184 | 34.3 | 0.35 | 4.86 | (143) | 53.2 | CW |
| 23 | 197 | 147 | 44.1 | 0.45 | 6.25 | (174) | 53.2 | CW |
| 29 | 160 | 120 | 53.9 | 0.55 | 7.64 | (216) | 53.2 | CW |
| 84 | 55.2 | 41.3 | 127 | 1.3 | 18.1 | (504) | 56.8 | CW |
| 103 | 44.9 | 33.5 | 157 | 1.6 | 22.2 | (618) | 56.8 | CW |
| 127 | 36.4 | 27.1 | 196 | 2.0 | 27.8 | (767) | 56.8 | CW |
| 157 | 29.6 | 22.2 | 235 | 2.4 | 33.3 | (940) | 56.8 | CW |
| 369 | 12.6 | 9.36 | 461 | 4.7 | 65.3 | (1793) | 60.4 | CW |
| 455 | 10.2 | 7.96 | 490 | 5.0 | 69.5 | (2231) | 60.4 | CW |
| 560 | 8.31 | 6.81 | 490 | 5.0 | 69.5 | (2715) | 60.4 | CW |
| 690 | 6.74 | 5.76 | 490 | 5.0 | 69.5 | (3370) | 60.4 | CW |
| 850 | 5.48 | 4.82 | 490 | 5.0 | 69.5 | (4068) | 60.4 | CW |

| IG-16VM-SRU3552B-06 DC6V | | 起動電流 Starting current 827mA | | | | | | |
|------------------------------|---|--|-----------------------|-------|-------|------------------------------|--------------------|-------------------------------|
| 減速比 Reduction Ratio (1/i) | 無負荷回転数 No-Load Speed min ⁻¹ | 定格回転数 Rated Speed min ⁻¹ | 定格トルク Rated Torque | | | 起動トルク Starting Torque mNm | 長さ(L) Length mm | 回転方向 Direction of rotation |
| | | | mNm | kg·cm | oz·in | | | |
| 19 | 202 | 159 | 29.4 | 0.30 | 4.17 | (138) | 53.2 | CW |
| 23 | 164 | 131 | 34.3 | 0.35 | 4.86 | (170) | 53.2 | CW |
| 29 | 133 | 105 | 44.1 | 0.45 | 6.25 | (209) | 53.2 | CW |
| 84 | 46.1 | 35.8 | 108 | 1.1 | 15.3 | (483) | 56.8 | CW |
| 103 | 37.5 | 28.8 | 137 | 1.4 | 19.4 | (591) | 56.8 | CW |
| 127 | 30.4 | 23.5 | 167 | 1.7 | 23.6 | (736) | 56.8 | CW |
| 157 | 24.7 | 19.1 | 206 | 2.1 | 29.2 | (909) | 56.8 | CW |
| 369 | 10.5 | 8.12 | 392 | 4.0 | 55.6 | (1729) | 60.4 | CW |
| 455 | 8.54 | 6.60 | 481 | 4.9 | 68.1 | (2117) | 60.4 | CW |
| 560 | 6.94 | 5.63 | 490 | 5.0 | 69.5 | (2596) | 60.4 | CW |
| 690 | 5.63 | 4.77 | 490 | 5.0 | 69.5 | (3208) | 60.4 | CW |
| 850 | 4.57 | 4.01 | 490 | 5.0 | 69.5 | (3999) | 60.4 | CW |

| IG-16VM-SRU3551B-12 DC12V | | 起動電流 Starting current 2270mA | | | | | | |
|------------------------------|---|--|-----------------------|-------|-------|------------------------------|--------------------|-------------------------------|
| 減速比 Reduction Ratio (1/i) | 無負荷回転数 No-Load Speed min ⁻¹ | 定格回転数 Rated Speed min ⁻¹ | 定格トルク Rated Torque | | | 起動トルク Starting Torque mNm | 長さ(L) Length mm | 回転方向 Direction of rotation |
| | | | mNm | kg·cm | oz·in | | | |
| 19 | 502 | 448 | 34.3 | 0.35 | 4.86 | (319) | 53.2 | CW |
| 23 | 407 | 362 | 44.1 | 0.45 | 6.25 | (399) | 53.2 | CW |
| 29 | 331 | 294 | 53.9 | 0.55 | 7.64 | (482) | 53.2 | CW |
| 84 | 114 | 101 | 127 | 1.3 | 18.1 | (1114) | 56.8 | CW |
| 103 | 92.9 | 82.4 | 157 | 1.6 | 22.2 | (1389) | 56.8 | CW |
| 127 | 75.4 | 66.8 | 196 | 2.0 | 27.8 | (1718) | 56.8 | CW |
| 157 | 61.3 | 54.1 | 245 | 2.5 | 34.7 | (2086) | 56.8 | CW |
| 369 | 26.1 | 23.0 | 471 | 4.8 | 66.7 | (3966) | 60.4 | CW |
| 455 | 21.2 | 19.1 | 490 | 5.0 | 69.5 | (4947) | 60.4 | CW |
| 560 | 17.2 | 15.8 | 490 | 5.0 | 69.5 | (6020) | 60.4 | CW |
| 690 | 14.0 | 13.1 | 490 | 5.0 | 69.5 | (7622) | 60.4 | CW |
| 850 | 11.3 | 10.7 | 490 | 5.0 | 69.5 | (9228) | 60.4 | CW |

| IG-16VM-SRU3553B-12 DC12V | | 起動電流 Starting current 1310mA | | | | | | |
|------------------------------|---|--|-----------------------|-------|-------|------------------------------|--------------------|-------------------------------|
| 減速比 Reduction Ratio (1/i) | 無負荷回転数 No-Load Speed min ⁻¹ | 定格回転数 Rated Speed min ⁻¹ | 定格トルク Rated Torque | | | 起動トルク Starting Torque mNm | 長さ(L) Length mm | 回転方向 Direction of rotation |
| | | | mNm | kg·cm | oz·in | | | |
| 19 | 368 | 286 | 53.9 | 0.55 | 7.64 | (242) | 53.2 | CW |
| 23 | 299 | 235 | 63.7 | 0.65 | 9.03 | (298) | 53.2 | CW |
| 29 | 243 | 191 | 78.5 | 0.8 | 11.1 | (367) | 53.2 | CW |
| 84 | 84.0 | 65.6 | 186 | 1.9 | 26.4 | (849) | 56.8 | CW |
| 103 | 68.2 | 52.9 | 235 | 2.4 | 33.3 | (1048) | 56.8 | CW |
| 127 | 55.4 | 43.2 | 284 | 2.9 | 40.3 | (1290) | 56.8 | CW |
| 157 | 45.0 | 35.0 | 353 | 3.6 | 50.0 | (1589) | 56.8 | CW |
| 369 | 19.2 | 16.0 | 490 | 5.0 | 69.5 | (2940) | 60.4 | CW |
| 455 | 15.6 | 13.5 | 490 | 5.0 | 69.5 | (3640) | 60.4 | CW |
| 560 | 12.6 | 11.3 | 490 | 5.0 | 69.5 | (4749) | 60.4 | CW |
| 690 | 10.3 | 9.36 | 490 | 5.0 | 69.5 | (5369) | 60.4 | CW |
| 850 | 8.33 | 7.74 | 490 | 5.0 | 69.5 | (6918) | 60.4 | CW |

| IG-16VM-SRU3554B-12 DC12V | | 起動電流 Starting current 951mA | | | | | | |
|------------------------------|---|--|-----------------------|-------|-------|------------------------------|--------------------|-------------------------------|
| 減速比 Reduction Ratio (1/i) | 無負荷回転数 No-Load Speed min ⁻¹ | 定格回転数 Rated Speed min ⁻¹ | 定格トルク Rated Torque | | | 起動トルク Starting Torque mNm | 長さ(L) Length mm | 回転方向 Direction of rotation |
| | | | mNm | kg·cm | oz·in | | | |
| 19 | 302 | 235 | 49.0 | 0.50 | 6.95 | (221) | 53.2 | CW |
| 23 | 245 | 192 | 58.8 | 0.60 | 8.34 | (272) | 53.2 | CW |
| 29 | 199 | 155 | 73.5 | 0.75 | 10.4 | (332) | 53.2 | CW |
| 84 | 68.9 | 54.1 | 167 | 1.7 | 23.6 | (777) | 56.8 | CW |
| 103 | 55.9 | 43.9 | 206 | 2.1 | 29.2 | (960) | 56.8 | CW |
| 127 | 45.4 | 35.6 | 255 | 2.6 | 36.1 | (1181) | 56.8 | CW |
| 157 | 36.9 | 28.7 | 324 | 3.3 | 45.8 | (1458) | 56.8 | CW |
| 369 | 15.7 | 12.9 | 490 | 5.0 | 69.5 | (2748) | 60.4 | CW |
| 455 | 12.8 | 10.9 | 490 | 5.0 | 69.5 | (3301) | 60.4 | CW |
| 560 | 10.4 | 9.14 | 490 | 5.0 | 69.5 | (4044) | 60.4 | CW |
| 690 | 8.41 | 7.61 | 490 | 5.0 | 69.5 | (5151) | 60.4 | CW |
| 850 | 6.83 | 6.30 | 490 | 5.0 | 69.5 | (6315) | 60.4 | CW |

| IG-16VM-SRU3560B-24 DC24V | | 起動電流 Starting current 855mA | | | | | | |
|------------------------------|---|--|-----------------------|-------|-------|------------------------------|--------------------|-------------------------------|
| 減速比 Reduction Ratio (1/i) | 無負荷回転数 No-Load Speed min ⁻¹ | 定格回転数 Rated Speed min ⁻¹ | 定格トルク Rated Torque | | | 起動トルク Starting Torque mNm | 長さ(L) Length mm | 回転方向 Direction of rotation |
| | | | mNm | kg·cm | oz·in | | | |
| 19 | 430 | 348 | 49.0 | 0.50 | 6.95 | (257) | 53.2 | CW |
| 23 | 349 | 284 | 58.8 | 0.60 | 8.34 | (316) | 53.2 | CW |
| 29 | 283 | 230 | 73.5 | 0.75 | 10.4 | (392) | 53.2 | CW |
| 84 | 98.0 | 79.9 | 167 | 1.7 | 23.6 | (904) | 56.8 | CW |
| 103 | 79.6 | 64.2 | 216 | 2.2 | 30.6 | (1116) | 56.8 | CW |
| 127 | 64.6 | 52.1 | 265 | 2.7 | 37.5 | (1370) | 56.8 | CW |
| 157 | 52.5 | 42.4 | 324 | 3.3 | 45.8 | (1684) | 56.8 | CW |
| 369 | 22.3 | 18.9 | 490 | 5.0 | 69.5 | (3214) | 60.4 | CW |
| 455 | 18.1 | 15.9 | 490 | 5.0 | 69.5 | (4031) | 60.4 | CW |
| 560 | 14.7 | 13.3 | 490 | 5.0 | 69.5 | (5145) | 60.4 | CW |
| 690 | 12.0 | 11.0 | 490 | 5.0 | 69.5 | (5880) | 60.4 | CW |
| 850 | 9.71 | 9.07 | 490 | 5.0 | 69.5 | (7434) | 60.4 | CW |

| IG-16VM-SRU3557B-24 DC24V | | 起動電流 Starting current 692mA | | | | | | |
|------------------------------|---|--|-----------------------|-------|-------|------------------------------|--------------------|-------------------------------|
| 減速比 Reduction Ratio (1/i) | 無負荷回転数 No-Load Speed min ⁻¹ | 定格回転数 Rated Speed min ⁻¹ | 定格トルク Rated Torque | | | 起動トルク Starting Torque mNm | 長さ(L) Length mm | 回転方向 Direction of rotation |
| | | | mNm | kg·cm | oz·in | | | |
| 19 | 354 | 284 | 53.9 | 0.55 | 7.64 | (273) | 53.2 | CW |
| 23 | 288 | 229 | 68.6 | 0.70 | 9.72 | (335) | 53.2 | CW |
| 29 | 234 | 186 | 83.4 | 0.85 | 11.8 | (407) | 53.2 | CW |
| 84 | 80.8 | 64.3 | 196 | 2.0 | 27.8 | (960) | 56.8 | CW |
| 103 | 65.6 | 52.5 | 235 | 2.4 | 33.3 | (1177) | 56.8 | CW |
| 127 | 53.3 | 42.5 | 294 | 3.0 | 41.7 | (1451) | 56.8 | CW |
| 157 | 43.3 | 34.5 | 363 | 3.7 | 51.4 | (1786) | 56.8 | CW |
| 369 | 18.4 | 15.8 | 490 | 5.0 | 69.5 | (3468) | 60.4 | CW |
| 455 | 15.0 | 13.2 | 490 | 5.0 | 69.5 | (4083) | 60.4 | CW |
| 560 | 12.2 | 11.0 | 490 | 5.0 | 69.5 | (4982) | 60.4 | CW |
| 690 | 9.87 | 9.11 | 490 | 5.0 | 69.5 | (6364) | 60.4 | CW |
| 850 | 8.01 | 7.51 | 490 | 5.0 | 69.5 | (7850) | 60.4 | CW |

| IG-16VM-SRU3554B-24 DC24V | | 起動電流 Starting current 2020mA | | | | | | |
|------------------------------|---|--|-----------------------|-------|-------|------------------------------|--------------------|-------------------------------|
| 減速比 Reduction Ratio (1/i) | 無負荷回転数 No-Load Speed min ⁻¹ | 定格回転数 Rated Speed min ⁻¹ | 定格トルク Rated Torque | | | 起動トルク Starting Torque mNm | 長さ(L) Length mm | 回転方向 Direction of rotation |
| | | | mNm | kg·cm | oz·in | | | |
| 19 | 590 | 535 | 49.0 | 0.50 | 6.95 | (526) | 53.2 | CW |
| 23 | 479 | 435 | 58.8 | 0.60 | 8.34 | (640) | 53.2 | CW |
| 29 | 389 | 353 | 73.5 | 0.75 | 10.4 | (794) | 53.2 | CW |
| 84 | 135 | 122 | 177 | 1.8 | 25.0 | (1838) | 56.8 | CW |
| 103 | 109 | 98.8 | 216 | 2.2 | 30.6 | (2308) | 56.8 | CW |
| 127 | 88.7 | 80.3 | 265 | 2.7 | 37.5 | (2798) | 56.8 | CW |
| 157 | 72.0 | 65.0 | 333 | 3.4 | 47.2 | (3425) | 56.8 | CW |
| 369 | 30.7 | 28.4 | 490 | 5.0 | 69.5 | (6540) | 60.4 | CW |
| 455 | 24.9 | 23.4 | 490 | 5.0 | 69.5 | (8134) | 60.4 | CW |
| 560 | 20.2 | 19.2 | 490 | 5.0 | 69.5 | (9898) | 60.4 | CW |
| 690 | 16.4 | 15.8 | 490 | 5.0 | 69.5 | (13393) | 60.4 | CW |
| 850 | 13.3 | 12.9 | 490 | 5.0 | 69.5 | (16293) | 60.4 | CW |

標準品 Standard
特注品 Custom-made

1. 上記データは参考値です。
2. 上記スペックは一例で、要望スペックにて承ります。

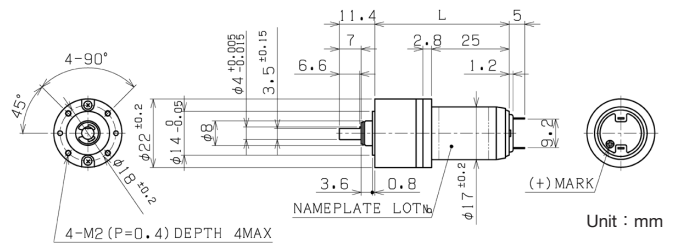
The above data is for reference only.
The above specifications are an example and your specifications are welcomed.

φ 22ギヤードモータ Gear Motor

コアレスモータ Coreless Motor

コアレスモータ Coreless Motor SCR17-25 × × page48

遊星ギヤヘッド Planetary Gearhead IG-22C page71



| IG-22CGM-SRU2501A-06 DC6V 起動電流 Starting current 2310mA | | | | | | | | |
|--|---|--|-----------------------|-------|-------|------------------------------|--------------------|-------------------------------|
| 減速比 Reduction Ratio (1/i) | 無負荷回転数 No-Load Speed min ⁻¹ | 定格回転数 Rated Speed min ⁻¹ | 定格トルク Rated Torque | | | 起動トルク Starting Torque mNm | 長さ(L) Length mm | 回転方向 Direction of rotation |
| | | | mNm | kg·cm | oz·in | | | |
| 4 | 2200 | 1840 | 6.86 | 0.07 | 0.972 | (41.9) | 43.3 | CW |
| 15 | 635 | 531 | 19.6 | 0.20 | 2.78 | (120) | 43.3 | CW |
| 20 | 489 | 412 | 24.5 | 0.25 | 3.47 | (156) | 43.3 | CW |
| 23 | 415 | 348 | 29.4 | 0.30 | 4.17 | (182) | 43.3 | CW |
| 61 | 161 | 134 | 63.7 | 0.65 | 9.03 | (380) | 46.5 | CW |
| 107 | 92.1 | 78.5 | 98.1 | 1.0 | 13.9 | (664) | 46.5 | CW |
| 242 | 40.8 | 35.8 | 147 | 1.5 | 20.8 | (1200) | 49.7 | CW |
| 326 | 30.3 | 27.6 | 147 | 1.5 | 20.8 | (1650) | 49.7 | CW |
| 410 | 24.1 | 21.8 | 196 | 2.0 | 27.8 | (2054) | 49.7 | CW |
| 483 | 20.5 | 18.8 | 196 | 2.0 | 27.8 | (2364) | 49.7 | CW |

| IG-22CGM-SRU2502A-06 DC6V 起動電流 Starting current 1660mA | | | | | | | | |
|--|---|--|-----------------------|-------|-------|------------------------------|--------------------|-------------------------------|
| 減速比 Reduction Ratio (1/i) | 無負荷回転数 No-Load Speed min ⁻¹ | 定格回転数 Rated Speed min ⁻¹ | 定格トルク Rated Torque | | | 起動トルク Starting Torque mNm | 長さ(L) Length mm | 回転方向 Direction of rotation |
| | | | mNm | kg·cm | oz·in | | | |
| 4 | 1790 | 1510 | 5.88 | 0.06 | 0.834 | (37.6) | 43.3 | CW |
| 15 | 517 | 446 | 14.7 | 0.15 | 2.08 | (107) | 43.3 | CW |
| 20 | 398 | 342 | 19.6 | 0.20 | 2.78 | (139) | 43.3 | CW |
| 23 | 338 | 287 | 24.5 | 0.25 | 3.47 | (162) | 43.3 | CW |
| 61 | 131 | 110 | 53.9 | 0.55 | 7.64 | (336) | 46.5 | CW |
| 107 | 75.0 | 63.2 | 93.2 | 0.95 | 13.2 | (592) | 46.5 | CW |
| 242 | 33.2 | 28.7 | 147 | 1.5 | 20.8 | (1085) | 49.7 | CW |
| 326 | 24.7 | 22.2 | 147 | 1.5 | 20.8 | (1452) | 49.7 | CW |
| 410 | 19.7 | 17.6 | 196 | 2.0 | 27.8 | (1839) | 49.7 | CW |
| 483 | 16.7 | 15.2 | 196 | 2.0 | 27.8 | (2182) | 49.7 | CW |

| IG-22CGM-SRU2503A-06 DC6V 起動電流 Starting current 1220mA | | | | | | | | |
|--|---|--|-----------------------|-------|-------|------------------------------|--------------------|-------------------------------|
| 減速比 Reduction Ratio (1/i) | 無負荷回転数 No-Load Speed min ⁻¹ | 定格回転数 Rated Speed min ⁻¹ | 定格トルク Rated Torque | | | 起動トルク Starting Torque mNm | 長さ(L) Length mm | 回転方向 Direction of rotation |
| | | | mNm | kg·cm | oz·in | | | |
| 4 | 1490 | 1250 | 5.39 | 0.06 | 0.764 | (33.5) | 43.3 | CW |
| 15 | 430 | 363 | 14.7 | 0.15 | 2.08 | (94.3) | 43.3 | CW |
| 20 | 331 | 278 | 19.6 | 0.20 | 2.78 | (122) | 43.3 | CW |
| 23 | 281 | 242 | 19.6 | 0.20 | 2.78 | (141) | 43.3 | CW |
| 61 | 109 | 92.8 | 44.1 | 0.45 | 6.25 | (297) | 46.5 | CW |
| 107 | 62.3 | 52.3 | 83.4 | 0.85 | 11.8 | (520) | 46.5 | CW |
| 242 | 27.6 | 23.3 | 147 | 1.5 | 20.8 | (944) | 49.7 | CW |
| 326 | 20.5 | 18.2 | 147 | 1.5 | 20.8 | (1310) | 49.7 | CW |
| 410 | 16.3 | 14.3 | 196 | 2.0 | 27.8 | (1597) | 49.7 | CW |
| 483 | 13.8 | 12.4 | 196 | 2.0 | 27.8 | (1932) | 49.7 | CW |

| IG-22CGM-SRU2505A-12 DC12V 起動電流 Starting current 1310mA | | | | | | | | |
|---|---|--|-----------------------|-------|-------|------------------------------|--------------------|-------------------------------|
| 減速比 Reduction Ratio (1/i) | 無負荷回転数 No-Load Speed min ⁻¹ | 定格回転数 Rated Speed min ⁻¹ | 定格トルク Rated Torque | | | 起動トルク Starting Torque mNm | 長さ(L) Length mm | 回転方向 Direction of rotation |
| | | | mNm | kg·cm | oz·in | | | |
| 4 | 2220 | 1910 | 6.86 | 0.07 | 0.972 | (49.1) | 43.3 | CW |
| 15 | 640 | 551 | 19.6 | 0.20 | 2.78 | (141) | 43.3 | CW |
| 20 | 493 | 427 | 24.5 | 0.25 | 3.47 | (183) | 43.3 | CW |
| 23 | 418 | 361 | 29.4 | 0.30 | 4.17 | (216) | 43.3 | CW |
| 61 | 162 | 139 | 63.7 | 0.65 | 9.03 | (449) | 46.5 | CW |
| 107 | 92.8 | 81.2 | 98.1 | 1.0 | 13.9 | (785) | 46.5 | CW |
| 242 | 41.1 | 36.9 | 147 | 1.5 | 20.8 | (1439) | 49.7 | CW |
| 326 | 30.6 | 28.2 | 147 | 1.5 | 20.8 | (1874) | 49.7 | CW |
| 410 | 24.3 | 22.4 | 196 | 2.0 | 27.8 | (2507) | 49.7 | CW |
| 483 | 20.6 | 19.2 | 196 | 2.0 | 27.8 | (2884) | 49.7 | CW |

| IG-22CGM-SRU2506A-12 DC12V 起動電流 Starting current 877mA | | | | | | | | |
|--|---|--|-----------------------|-------|-------|------------------------------|--------------------|-------------------------------|
| 減速比 Reduction Ratio (1/i) | 無負荷回転数 No-Load Speed min ⁻¹ | 定格回転数 Rated Speed min ⁻¹ | 定格トルク Rated Torque | | | 起動トルク Starting Torque mNm | 長さ(L) Length mm | 回転方向 Direction of rotation |
| | | | mNm | kg·cm | oz·in | | | |
| 4 | 1860 | 1530 | 6.86 | 0.07 | 0.972 | (38.7) | 43.3 | CW |
| 15 | 536 | 441 | 19.6 | 0.20 | 2.78 | (111) | 43.3 | CW |
| 20 | 412 | 342 | 24.5 | 0.25 | 3.47 | (144) | 43.3 | CW |
| 23 | 350 | 289 | 29.4 | 0.30 | 4.17 | (169) | 43.3 | CW |
| 61 | 136 | 111 | 63.7 | 0.65 | 9.03 | (347) | 46.5 | CW |
| 107 | 77.7 | 65.2 | 98.1 | 1.0 | 13.9 | (610) | 46.5 | CW |
| 242 | 34.4 | 29.9 | 147 | 1.5 | 20.8 | (1124) | 49.7 | CW |
| 326 | 25.6 | 23.1 | 147 | 1.5 | 20.8 | (1505) | 49.7 | CW |
| 410 | 20.4 | 18.3 | 196 | 2.0 | 27.8 | (1904) | 49.7 | CW |
| 483 | 17.3 | 15.7 | 196 | 2.0 | 27.8 | (2119) | 49.7 | CW |

| IG-22CGM-SRU2507A-12 DC12V 起動電流 Starting current 610mA | | | | | | | | |
|--|---|--|-----------------------|-------|-------|------------------------------|--------------------|-------------------------------|
| 減速比 Reduction Ratio (1/i) | 無負荷回転数 No-Load Speed min ⁻¹ | 定格回転数 Rated Speed min ⁻¹ | 定格トルク Rated Torque | | | 起動トルク Starting Torque mNm | 長さ(L) Length mm | 回転方向 Direction of rotation |
| | | | mNm | kg·cm | oz·in | | | |
| 4 | 1490 | 1200 | 6.37 | 0.07 | 0.903 | (32.7) | 43.3 | CW |
| 15 | 430 | 363 | 14.7 | 0.15 | 2.08 | (94.3) | 43.3 | CW |
| 20 | 331 | 278 | 19.6 | 0.20 | 2.78 | (122) | 43.3 | CW |
| 23 | 281 | 233 | 24.5 | 0.25 | 3.47 | (143) | 43.3 | CW |
| 61 | 109 | 89.2 | 53.9 | 0.55 | 7.64 | (297) | 46.5 | CW |
| 107 | 62.4 | 50.6 | 98.1 | 1.0 | 13.9 | (519) | 46.5 | CW |
| 242 | 27.6 | 23.3 | 147 | 1.5 | 20.8 | (944) | 49.7 | CW |
| 326 | 20.5 | 18.2 | 147 | 1.5 | 20.8 | (1310) | 49.7 | CW |
| 410 | 16.4 | 14.4 | 196 | 2.0 | 27.8 | (1607) | 49.7 | CW |
| 483 | 13.9 | 12.4 | 196 | 2.0 | 27.8 | (1816) | 49.7 | CW |

| IG-22CGM-SRU2508A-24 DC24V 起動電流 Starting current 756mA | | | | | | | | |
|--|---|--|-----------------------|-------|-------|------------------------------|--------------------|-------------------------------|
| 減速比 Reduction Ratio (1/i) | 無負荷回転数 No-Load Speed min ⁻¹ | 定格回転数 Rated Speed min ⁻¹ | 定格トルク Rated Torque | | | 起動トルク Starting Torque mNm | 長さ(L) Length mm | 回転方向 Direction of rotation |
| | | | mNm | kg·cm | oz·in | | | |
| 4 | 2430 | 2110 | 6.86 | 0.07 | 0.972 | (52.1) | 43.3 | CW |
| 15 | 702 | 607 | 19.6 | 0.20 | 2.78 | (145) | 43.3 | CW |
| 20 | 540 | 470 | 24.5 | 0.25 | 3.47 | (189) | 43.3 | CW |
| 23 | 458 | 397 | 29.4 | 0.30 | 4.17 | (221) | 43.3 | CW |
| 61 | 178 | 153 | 63.7 | 0.65 | 9.03 | (454) | 46.5 | CW |
| 107 | 102 | 89.3 | 98.1 | 1.0 | 13.9 | (788) | 46.5 | CW |
| 242 | 45.1 | 40.5 | 147 | 1.5 | 20.8 | (1441) | 49.7 | CW |
| 326 | 33.5 | 31.0 | 147 | 1.5 | 20.8 | (1970) | 49.7 | CW |
| 410 | 26.7 | 24.6 | 196 | 2.0 | 27.8 | (2492) | 49.7 | CW |
| 483 | 22.6 | 21.1 | 196 | 2.0 | 27.8 | (2953) | 49.7 | CW |

| IG-22CGM-SRU2509A-24 DC24V 起動電流 Starting current 448mA | | | | | | | | |
|--|---|--|-----------------------|-------|-------|------------------------------|--------------------|-------------------------------|
| 減速比 Reduction Ratio (1/i) | 無負荷回転数 No-Load Speed min ⁻¹ | 定格回転数 Rated Speed min ⁻¹ | 定格トルク Rated Torque | | | 起動トルク Starting Torque mNm | 長さ(L) Length mm | 回転方向 Direction of rotation |
| | | | mNm | kg·cm | oz·in | | | |
| 4 | 1800 | 1500 | 6.86 | 0.07 | 0.972 | (41.2) | 43.3 | CW |
| 15 | 521 | 432 | 19.6 | 0.20 | 2.78 | (115) | 43.3 | CW |
| 20 | 401 | 335 | 24.5 | 0.25 | 3.47 | (149) | 43.3 | CW |
| 23 | 340 | 283 | 29.4 | 0.30 | 4.17 | (175) | 43.3 | CW |
| 61 | 132 | 109 | 63.7 | 0.65 | 9.03 | (366) | 46.5 | CW |
| 107 | 75.6 | 63.9 | 98.1 | 1.0 | 13.9 | (634) | 46.5 | CW |
| 242 | 33.4 | 29.2 | 147 | 1.5 | 20.8 | (1169) | 49.7 | CW |
| 326 | 24.9 | 22.5 | 147 | 1.5 | 20.8 | (1525) | 49.7 | CW |
| 410 | 19.8 | 17.8 | 196 | 2.0 | 27.8 | (1940) | 49.7 | CW |
| 483 | 16.8 | 15.4 | 196 | 2.0 | 27.8 | (2352) | 49.7 | CW |

標準品 Standard
特注品 Custom-made

1. 上記データは参考値です。
2. 上記スペックは一例で、要望スペックにて承ります。

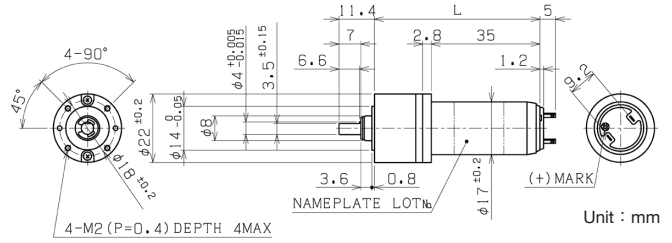
The above data is for reference only.
The above specifications are an example and your specifications are welcomed.

φ 22ギヤードモータ Gear Motor

コアレスモータ Coreless Motor

コアレスモータ Coreless Motor **SCR17-35 × ×** page49

遊星ギヤヘッド Planetary Gearhead **IG-22C** page71



| IG-22CGM-SRU3551B-06 DC6V 起動電流 Starting current 1040mA | | | | | | | | |
|--|---|--|-----------------------|-------|-------|------------------------------|--------------------|-------------------------------|
| 減速比 Reduction Ratio (1/i) | 無負荷回転数 No-Load Speed min ⁻¹ | 定格回転数 Rated Speed min ⁻¹ | 定格トルク Rated Torque | | | 起動トルク Starting Torque mNm | 長さ(L) Length mm | 回転方向 Direction of rotation |
| | | | mNm | kg·cm | oz·in | | | |
| 4 | 1030 | 788 | 9.81 | 0.10 | 1.39 | (41.8) | 53.3 | CW |
| 15 | 299 | 223 | 29.4 | 0.30 | 4.17 | (116) | 53.3 | CW |
| 20 | 230 | 178 | 34.3 | 0.35 | 4.86 | (152) | 53.3 | CW |
| 23 | 195 | 147 | 44.1 | 0.45 | 6.25 | (179) | 53.3 | CW |
| 61 | 75.7 | 56.5 | 93.2 | 0.95 | 13.2 | (367) | 56.5 | CW |
| 107 | 43.3 | 36.7 | 98.1 | 1.0 | 13.9 | (644) | 56.5 | CW |
| 242 | 19.2 | 16.8 | 147 | 1.5 | 20.8 | (1176) | 59.7 | CW |
| 326 | 14.3 | 12.9 | 147 | 1.5 | 20.8 | (1502) | 59.7 | CW |
| 410 | 11.4 | 10.2 | 196 | 2.0 | 27.8 | (1862) | 59.7 | CW |
| 483 | 9.63 | 8.82 | 196 | 2.0 | 27.8 | (2330) | 59.7 | CW |

| IG-22CGM-SRU3552B-06 DC6V 起動電流 Starting current 827mA | | | | | | | | |
|---|---|--|-----------------------|-------|-------|------------------------------|--------------------|-------------------------------|
| 減速比 Reduction Ratio (1/i) | 無負荷回転数 No-Load Speed min ⁻¹ | 定格回転数 Rated Speed min ⁻¹ | 定格トルク Rated Torque | | | 起動トルク Starting Torque mNm | 長さ(L) Length mm | 回転方向 Direction of rotation |
| | | | mNm | kg·cm | oz·in | | | |
| 4 | 864 | 670 | 8.83 | 0.09 | 1.25 | (39.3) | 53.3 | CW |
| 15 | 250 | 194 | 24.5 | 0.25 | 3.47 | (109) | 53.3 | CW |
| 20 | 192 | 153 | 29.4 | 0.3 | 4.17 | (145) | 53.3 | CW |
| 23 | 163 | 125 | 39.2 | 0.4 | 5.56 | (168) | 53.3 | CW |
| 61 | 63.2 | 49.1 | 78.5 | 0.8 | 11.1 | (352) | 56.5 | CW |
| 107 | 36.2 | 30.4 | 98.1 | 1.0 | 13.9 | (612) | 56.5 | CW |
| 242 | 16.0 | 13.9 | 147 | 1.5 | 20.8 | (1120) | 59.7 | CW |
| 326 | 11.9 | 10.8 | 147 | 1.5 | 20.8 | (1590) | 59.7 | CW |
| 410 | 9.48 | 8.51 | 196 | 2.0 | 27.8 | (1916) | 59.7 | CW |
| 483 | 8.04 | 7.34 | 196 | 2.0 | 27.8 | (2251) | 59.7 | CW |

| IG-22CGM-SRU3551B-12 DC12V 起動電流 Starting current 2270mA | | | | | | | | |
|---|---|--|-----------------------|-------|-------|------------------------------|--------------------|-------------------------------|
| 減速比 Reduction Ratio (1/i) | 無負荷回転数 No-Load Speed min ⁻¹ | 定格回転数 Rated Speed min ⁻¹ | 定格トルク Rated Torque | | | 起動トルク Starting Torque mNm | 長さ(L) Length mm | 回転方向 Direction of rotation |
| | | | mNm | kg·cm | oz·in | | | |
| 4 | 2140 | 1910 | 9.81 | 0.10 | 1.39 | (91.3) | 53.3 | CW |
| 15 | 619 | 549 | 29.4 | 0.30 | 4.17 | (260) | 53.3 | CW |
| 20 | 476 | 421 | 39.2 | 0.40 | 5.56 | (339) | 53.3 | CW |
| 23 | 404 | 359 | 44.1 | 0.45 | 6.25 | (396) | 53.3 | CW |
| 61 | 157 | 139 | 93.2 | 0.95 | 13.2 | (813) | 56.5 | CW |
| 107 | 89.7 | 83.6 | 98.1 | 1.0 | 13.9 | (1443) | 56.5 | CW |
| 242 | 39.7 | 37.5 | 147 | 1.5 | 20.8 | (2653) | 59.7 | CW |
| 326 | 29.5 | 28.3 | 147 | 1.5 | 20.8 | (3614) | 59.7 | CW |
| 410 | 23.5 | 22.5 | 196 | 2.0 | 27.8 | (4606) | 59.7 | CW |
| 483 | 19.9 | 19.2 | 196 | 2.0 | 27.8 | (5572) | 59.7 | CW |

| IG-22CGM-SRU3553B-12 DC12V 起動電流 Starting current 1310mA | | | | | | | | |
|---|---|--|-----------------------|-------|-------|------------------------------|--------------------|-------------------------------|
| 減速比 Reduction Ratio (1/i) | 無負荷回転数 No-Load Speed min ⁻¹ | 定格回転数 Rated Speed min ⁻¹ | 定格トルク Rated Torque | | | 起動トルク Starting Torque mNm | 長さ(L) Length mm | 回転方向 Direction of rotation |
| | | | mNm | kg·cm | oz·in | | | |
| 4 | 1570 | 1240 | 14.7 | 0.15 | 2.08 | (69.9) | 53.3 | CW |
| 15 | 454 | 352 | 44.1 | 0.45 | 6.25 | (196) | 53.3 | CW |
| 20 | 350 | 282 | 49.0 | 0.5 | 6.95 | (252) | 53.3 | CW |
| 23 | 297 | 248 | 49.0 | 0.5 | 6.95 | (297) | 53.3 | CW |
| 61 | 115 | 96.9 | 98.1 | 1.0 | 13.9 | (623) | 56.5 | CW |
| 107 | 65.9 | 59.9 | 98.1 | 1.0 | 13.9 | (1077) | 56.5 | CW |
| 242 | 29.2 | 27.0 | 147 | 1.5 | 20.8 | (1951) | 59.7 | CW |
| 326 | 21.7 | 20.5 | 147 | 1.5 | 20.8 | (2658) | 59.7 | CW |
| 410 | 17.3 | 16.3 | 196 | 2.0 | 27.8 | (3391) | 59.7 | CW |
| 483 | 14.6 | 13.9 | 196 | 2.0 | 27.8 | (4088) | 59.7 | CW |

| IG-22CGM-SRU3554B-12 DC12V 起動電流 Starting current 951mA | | | | | | | | |
|--|---|--|-----------------------|-------|-------|------------------------------|--------------------|-------------------------------|
| 減速比 Reduction Ratio (1/i) | 無負荷回転数 No-Load Speed min ⁻¹ | 定格回転数 Rated Speed min ⁻¹ | 定格トルク Rated Torque | | | 起動トルク Starting Torque mNm | 長さ(L) Length mm | 回転方向 Direction of rotation |
| | | | mNm | kg·cm | oz·in | | | |
| 4 | 1290 | 1090 | 9.81 | 0.1 | 1.39 | (63.3) | 53.3 | CW |
| 15 | 373 | 291 | 39.2 | 0.4 | 5.56 | (178) | 53.3 | CW |
| 20 | 287 | 226 | 49.0 | 0.5 | 6.95 | (231) | 53.3 | CW |
| 23 | 243 | 200 | 49.0 | 0.5 | 6.95 | (277) | 53.3 | CW |
| 61 | 94.4 | 78.1 | 98.1 | 1.0 | 13.9 | (568) | 56.5 | CW |
| 107 | 54.0 | 48.7 | 98.1 | 1.0 | 13.9 | (1000) | 56.5 | CW |
| 242 | 23.9 | 22.0 | 147 | 1.5 | 20.8 | (1849) | 59.7 | CW |
| 326 | 17.8 | 16.7 | 147 | 1.5 | 20.8 | (2379) | 59.7 | CW |
| 410 | 14.2 | 13.3 | 196 | 2.0 | 27.8 | (3092) | 59.7 | CW |
| 483 | 12.0 | 11.4 | 196 | 2.0 | 27.8 | (3920) | 59.7 | CW |

| IG-22CGM-SRU3560B-24 DC24V 起動電流 Starting current 855mA | | | | | | | | |
|--|---|--|-----------------------|-------|-------|------------------------------|--------------------|-------------------------------|
| 減速比 Reduction Ratio (1/i) | 無負荷回転数 No-Load Speed min ⁻¹ | 定格回転数 Rated Speed min ⁻¹ | 定格トルク Rated Torque | | | 起動トルク Starting Torque mNm | 長さ(L) Length mm | 回転方向 Direction of rotation |
| | | | mNm | kg·cm | oz·in | | | |
| 4 | 1840 | 1590 | 9.81 | 0.1 | 1.39 | (72.2) | 53.3 | CW |
| 15 | 530 | 430 | 39.2 | 0.4 | 5.56 | (208) | 53.3 | CW |
| 20 | 408 | 334 | 49.0 | 0.5 | 6.95 | (270) | 53.3 | CW |
| 23 | 346 | 293 | 49.0 | 0.5 | 6.95 | (320) | 53.3 | CW |
| 61 | 134 | 114 | 98.1 | 1.0 | 13.9 | (657) | 56.5 | CW |
| 107 | 76.9 | 70.3 | 98.1 | 1.0 | 13.9 | (1143) | 56.5 | CW |
| 242 | 34.0 | 31.7 | 147 | 1.5 | 20.8 | (2173) | 59.7 | CW |
| 326 | 25.3 | 24.0 | 147 | 1.5 | 20.8 | (2861) | 59.7 | CW |
| 410 | 20.1 | 19.0 | 196 | 2.0 | 27.8 | (3581) | 59.7 | CW |
| 483 | 17.1 | 16.3 | 196 | 2.0 | 27.8 | (4190) | 59.7 | CW |

| IG-22CGM-SRU3557B-24 DC24V 起動電流 Starting current 692mA | | | | | | | | |
|--|---|--|-----------------------|-------|-------|------------------------------|--------------------|-------------------------------|
| 減速比 Reduction Ratio (1/i) | 無負荷回転数 No-Load Speed min ⁻¹ | 定格回転数 Rated Speed min ⁻¹ | 定格トルク Rated Torque | | | 起動トルク Starting Torque mNm | 長さ(L) Length mm | 回転方向 Direction of rotation |
| | | | mNm | kg·cm | oz·in | | | |
| 4 | 1510 | 1230 | 14.7 | 0.15 | 2.08 | (79.3) | 53.3 | CW |
| 15 | 437 | 350 | 44.1 | 0.45 | 6.25 | (222) | 53.3 | CW |
| 20 | 336 | 279 | 49.0 | 0.5 | 6.95 | (289) | 53.3 | CW |
| 23 | 285 | 244 | 49.0 | 0.5 | 6.95 | (341) | 53.3 | CW |
| 61 | 111 | 95.2 | 98.1 | 1.0 | 13.9 | (689) | 56.5 | CW |
| 107 | 63.4 | 58.3 | 98.1 | 1.0 | 13.9 | (1220) | 56.5 | CW |
| 242 | 28.1 | 26.2 | 147 | 1.5 | 20.8 | (2174) | 59.7 | CW |
| 326 | 20.9 | 19.8 | 147 | 1.5 | 20.8 | (2793) | 59.7 | CW |
| 410 | 16.6 | 15.8 | 196 | 2.0 | 27.8 | (4067) | 59.7 | CW |
| 483 | 14.1 | 13.5 | 196 | 2.0 | 27.8 | (4606) | 59.7 | CW |

| IG-22CGM-SRU3554B-24 DC24V 起動電流 Starting current 2020mA | | | | | | | | |
|---|---|--|-----------------------|-------|-------|------------------------------|--------------------|-------------------------------|
| 減速比 Reduction Ratio (1/i) | 無負荷回転数 No-Load Speed min ⁻¹ | 定格回転数 Rated Speed min ⁻¹ | 定格トルク Rated Torque | | | 起動トルク Starting Torque mNm | 長さ(L) Length mm | 回転方向 Direction of rotation |
| | | | mNm | kg·cm | oz·in | | | |
| 4 | 2520 | 2360 | 9.81 | 0.1 | 1.39 | (155) | 53.3 | CW |
| 15 | 728 | 660 | 39.2 | 0.4 | 5.56 | (420) | 53.3 | CW |
| 20 | 560 | 510 | 49.0 | 0.5 | 6.95 | (549) | 53.3 | CW |
| 23 | 475 | 439 | 49.0 | 0.5 | 6.95 | (647) | 53.3 | CW |
| 61 | 184 | 171 | 98.1 | 1.0 | 13.9 | (1388) | 56.5 | CW |
| 107 | 105 | 101 | 98.1 | 1.0 | 13.9 | (2575) | 56.5 | CW |
| 242 | 46.7 | 45.1 | 147 | 1.5 | 20.8 | (4291) | 59.7 | CW |
| 326 | 34.7 | 33.8 | 147 | 1.5 | 20.8 | (5668) | 59.7 | CW |
| 410 | 27.7 | 26.9 | 196 | 2.0 | 27.8 | (6786) | 59.7 | CW |
| 483 | 23.4 | 22.9 | 196 | 2.0 | 27.8 | (9173) | 59.7 | CW |

：標準品 Standard 1. 上記データは参考値です。 The above data is for reference only.
 ：特注品 Custom-made 2. 上記スペックは一例で、要望スペックにて承ります。 The above specifications are an example and your specifications are welcomed.

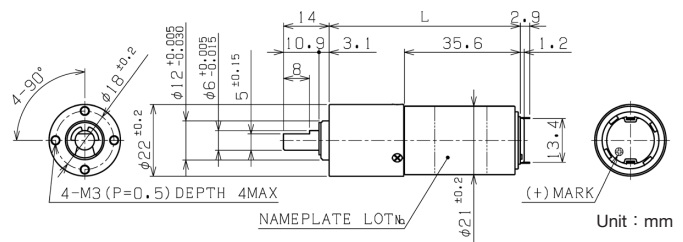
索引 INDEX
 選定 Selection Guide
 技術情報 Technical Information
 Motor
 コアレス Coreless
 ブラシレス Brushless
 エンコーダ Encoder
 磁気 Magnetic
 光学 Optical
 Gearhead
 遊星 Planetary
 Spur
 スパー
 Gear Motor
 コアレス Coreless
 Iron Core
 ブラシレス Brushless

φ22ギヤードモータ Gear Motor

コアレスモータ Coreless Motor

コアレスモータ Coreless Motor SC21-37 × × page51

遊星ギヤヘッド Planetary Gearhead IG-22V page72



| IG-22VM-SRY3702B-06 DC6V | | 起動電流 Starting current 2060mA | | | | | | |
|------------------------------|---|--|-----------------------|-------|-------|------------------------------|--------------------|-------------------------------|
| 減速比 Reduction Ratio (1/i) | 無負荷回転数 No-Load Speed min ⁻¹ | 定格回転数 Rated Speed min ⁻¹ | 定格トルク Rated Torque | | | 起動トルク Starting Torque mNm | 長さ(L) Length mm | 回転方向 Direction of rotation |
| | | | mNm | kg·cm | oz·in | | | |
| 4 | 1630 | 1310 | 9.81 | 0.10 | 1.39 | (50.0) | 53.5 | CW |
| 16 | 408 | 310 | 39.2 | 0.40 | 5.56 | (163) | 58.7 | CW |
| 19 | 343 | 257 | 49.0 | 0.50 | 6.95 | (195) | 58.7 | CW |
| 22 | 289 | 222 | 53.9 | 0.55 | 7.64 | (232) | 58.7 | CW |
| 64 | 102 | 77.2 | 127 | 1.3 | 18.1 | (522) | 63.9 | CW |
| 76 | 85.8 | 64.3 | 157 | 1.6 | 22.2 | (627) | 63.9 | CW |
| 90 | 72.3 | 54.1 | 186 | 1.9 | 26.4 | (739) | 63.9 | CW |
| 107 | 60.9 | 46.0 | 216 | 2.2 | 30.6 | (883) | 63.9 | CW |
| 256 | 25.5 | 19.0 | 431 | 4.4 | 61.1 | (1691) | 69.1 | CW |
| 304 | 21.5 | 16.1 | 510 | 5.2 | 72.2 | (2031) | 69.1 | CW |
| 361 | 18.1 | 13.5 | 608 | 6.2 | 86.1 | (2392) | 69.1 | CW |
| 428 | 15.2 | 11.4 | 716 | 7.3 | 101 | (2864) | 69.1 | CW |
| 509 | 12.8 | 9.85 | 785 | 8.0 | 111 | (3406) | 69.1 | CW |

| IG-22VM-SRY3703B-12 DC12V | | 起動電流 Starting current 2300mA | | | | | | |
|------------------------------|---|--|-----------------------|-------|-------|------------------------------|--------------------|-------------------------------|
| 減速比 Reduction Ratio (1/i) | 無負荷回転数 No-Load Speed min ⁻¹ | 定格回転数 Rated Speed min ⁻¹ | 定格トルク Rated Torque | | | 起動トルク Starting Torque mNm | 長さ(L) Length mm | 回転方向 Direction of rotation |
| | | | mNm | kg·cm | oz·in | | | |
| 4 | 2010 | 1820 | 9.81 | 0.10 | 1.39 | (104) | 53.5 | CW |
| 16 | 504 | 435 | 44.1 | 0.45 | 6.25 | (322) | 58.7 | CW |
| 19 | 424 | 365 | 53.9 | 0.55 | 7.64 | (387) | 58.7 | CW |
| 22 | 357 | 308 | 63.7 | 0.65 | 9.03 | (464) | 58.7 | CW |
| 64 | 126 | 108 | 147 | 1.5 | 20.8 | (1029) | 63.9 | CW |
| 76 | 106 | 91.0 | 177 | 1.8 | 25.0 | (1251) | 63.9 | CW |
| 90 | 89.3 | 76.8 | 206 | 2.1 | 29.2 | (1472) | 63.9 | CW |
| 107 | 75.2 | 64.7 | 245 | 2.5 | 34.7 | (1755) | 63.9 | CW |
| 256 | 31.5 | 27.0 | 481 | 4.9 | 68.1 | (3367) | 69.1 | CW |
| 304 | 26.5 | 22.8 | 569 | 5.8 | 80.6 | (4075) | 69.1 | CW |
| 361 | 22.3 | 19.2 | 677 | 6.9 | 95.9 | (4870) | 69.1 | CW |
| 428 | 18.8 | 16.2 | 785 | 8.0 | 111 | (5676) | 69.1 | CW |
| 509 | 15.8 | 14.0 | 785 | 8.0 | 111 | (6891) | 69.1 | CW |

| IG-22VM-SRY3705B-12 DC12V | | 起動電流 Starting current 1550mA | | | | | | |
|------------------------------|---|--|-----------------------|-------|-------|------------------------------|--------------------|-------------------------------|
| 減速比 Reduction Ratio (1/i) | 無負荷回転数 No-Load Speed min ⁻¹ | 定格回転数 Rated Speed min ⁻¹ | 定格トルク Rated Torque | | | 起動トルク Starting Torque mNm | 長さ(L) Length mm | 回転方向 Direction of rotation |
| | | | mNm | kg·cm | oz·in | | | |
| 4 | 1720 | 1510 | 9.81 | 0.10 | 1.39 | (80.3) | 53.5 | CW |
| 16 | 430 | 356 | 44.1 | 0.45 | 6.25 | (256) | 58.7 | CW |
| 19 | 362 | 298 | 53.9 | 0.55 | 7.64 | (305) | 58.7 | CW |
| 22 | 305 | 251 | 63.7 | 0.65 | 9.03 | (360) | 58.7 | CW |
| 64 | 108 | 88.4 | 147 | 1.5 | 20.8 | (810) | 63.9 | CW |
| 76 | 90.6 | 74.2 | 177 | 1.8 | 25.0 | (978) | 63.9 | CW |
| 90 | 76.3 | 62.8 | 206 | 2.1 | 29.2 | (1164) | 63.9 | CW |
| 107 | 64.2 | 52.8 | 245 | 2.5 | 34.7 | (1380) | 63.9 | CW |
| 256 | 26.9 | 22.1 | 481 | 4.9 | 68.1 | (2696) | 69.1 | CW |
| 304 | 22.6 | 18.6 | 569 | 5.8 | 80.6 | (3215) | 69.1 | CW |
| 361 | 19.1 | 15.6 | 677 | 6.9 | 95.9 | (3694) | 69.1 | CW |
| 428 | 16.1 | 13.2 | 785 | 8.0 | 111 | (4358) | 69.1 | CW |
| 509 | 13.5 | 11.5 | 785 | 8.0 | 111 | (5299) | 69.1 | CW |

| IG-22VM-SRY3712B-12 DC12V | | 起動電流 Starting current 379mA | | | | | | |
|------------------------------|---|--|-----------------------|-------|-------|------------------------------|--------------------|-------------------------------|
| 減速比 Reduction Ratio (1/i) | 無負荷回転数 No-Load Speed min ⁻¹ | 定格回転数 Rated Speed min ⁻¹ | 定格トルク Rated Torque | | | 起動トルク Starting Torque mNm | 長さ(L) Length mm | 回転方向 Direction of rotation |
| | | | mNm | kg·cm | oz·in | | | |
| 4 | 599 | 437 | 14.7 | 0.15 | 2.08 | (54.4) | 53.5 | CW |
| 16 | 150 | 108 | 49.0 | 0.5 | 6.95 | (175) | 58.7 | CW |
| 19 | 126 | 90.8 | 58.8 | 0.6 | 8.34 | (210) | 58.7 | CW |
| 22 | 106 | 77.0 | 68.6 | 0.7 | 9.72 | (251) | 58.7 | CW |
| 64 | 37.4 | 27.1 | 157 | 1.6 | 22.2 | (570) | 63.9 | CW |
| 76 | 31.5 | 22.4 | 196 | 2.0 | 27.8 | (678) | 63.9 | CW |
| 90 | 26.5 | 19.1 | 226 | 2.3 | 32.0 | (809) | 63.9 | CW |
| 107 | 22.4 | 15.9 | 275 | 2.8 | 38.9 | (948) | 63.9 | CW |
| 256 | 9.36 | 6.63 | 539 | 5.5 | 76.4 | (1848) | 69.1 | CW |
| 304 | 7.88 | 5.59 | 637 | 6.5 | 90.3 | (2192) | 69.1 | CW |
| 361 | 6.64 | 4.71 | 755 | 7.7 | 107 | (2598) | 69.1 | CW |
| 428 | 5.59 | 4.17 | 785 | 8.0 | 111 | (3090) | 69.1 | CW |
| 509 | 4.71 | 3.70 | 785 | 8.0 | 111 | (3661) | 69.1 | CW |

| IG-22VM-SRY3713B-12 DC12V | | 起動電流 Starting current 2140mA | | | | | | |
|------------------------------|---|--|-----------------------|-------|-------|------------------------------|--------------------|-------------------------------|
| 減速比 Reduction Ratio (1/i) | 無負荷回転数 No-Load Speed min ⁻¹ | 定格回転数 Rated Speed min ⁻¹ | 定格トルク Rated Torque | | | 起動トルク Starting Torque mNm | 長さ(L) Length mm | 回転方向 Direction of rotation |
| | | | mNm | kg·cm | oz·in | | | |
| 4 | 2060 | 1630 | 19.6 | 0.20 | 2.78 | (93.9) | 53.5 | CW |
| 16 | 515 | 398 | 68.6 | 0.70 | 9.72 | (302) | 58.7 | CW |
| 19 | 433 | 333 | 83.4 | 0.85 | 11.8 | (361) | 58.7 | CW |
| 22 | 365 | 282 | 98.1 | 1.0 | 13.9 | (431) | 58.7 | CW |
| 64 | 129 | 99.0 | 226 | 2.3 | 32.0 | (972) | 63.9 | CW |
| 76 | 108 | 82.7 | 275 | 2.8 | 38.9 | (1174) | 63.9 | CW |
| 90 | 91.2 | 69.8 | 324 | 3.3 | 45.8 | (1381) | 63.9 | CW |
| 107 | 76.8 | 58.9 | 382 | 3.9 | 54.2 | (1639) | 63.9 | CW |
| 256 | 32.2 | 24.5 | 755 | 7.7 | 107 | (3157) | 69.1 | CW |
| 304 | 27.1 | 21.4 | 785 | 8.0 | 111 | (3732) | 69.1 | CW |
| 361 | 22.8 | 18.8 | 785 | 8.0 | 111 | (4475) | 69.1 | CW |
| 428 | 19.2 | 16.4 | 785 | 8.0 | 111 | (5383) | 69.1 | CW |
| 509 | 16.2 | 14.2 | 785 | 8.0 | 111 | (6359) | 69.1 | CW |

| IG-22VM-SRY3710B-24 DC24V | | 起動電流 Starting current 749mA | | | | | | |
|------------------------------|---|--|-----------------------|-------|-------|------------------------------|--------------------|-------------------------------|
| 減速比 Reduction Ratio (1/i) | 無負荷回転数 No-Load Speed min ⁻¹ | 定格回転数 Rated Speed min ⁻¹ | 定格トルク Rated Torque | | | 起動トルク Starting Torque mNm | 長さ(L) Length mm | 回転方向 Direction of rotation |
| | | | mNm | kg·cm | oz·in | | | |
| 4 | 2270 | 1870 | 9.81 | 0.10 | 1.39 | (55.7) | 53.5 | CW |
| 16 | 568 | 445 | 39.2 | 0.40 | 5.56 | (181) | 58.7 | CW |
| 19 | 478 | 369 | 49.0 | 0.50 | 6.95 | (215) | 58.7 | CW |
| 22 | 403 | 318 | 53.9 | 0.55 | 7.64 | (256) | 58.7 | CW |
| 64 | 142 | 111 | 127 | 1.3 | 18.1 | (582) | 63.9 | CW |
| 76 | 120 | 92.4 | 157 | 1.6 | 22.2 | (683) | 63.9 | CW |
| 90 | 101 | 77.8 | 186 | 1.9 | 26.4 | (810) | 63.9 | CW |
| 107 | 84.8 | 66.0 | 216 | 2.2 | 30.6 | (974) | 63.9 | CW |
| 256 | 35.5 | 27.4 | 431 | 4.4 | 61.1 | (1889) | 69.1 | CW |
| 304 | 29.9 | 23.1 | 510 | 5.2 | 72.2 | (2243) | 69.1 | CW |
| 361 | 25.2 | 19.4 | 608 | 6.2 | 86.1 | (2642) | 69.1 | CW |
| 428 | 21.2 | 16.4 | 716 | 7.3 | 101 | (3162) | 69.1 | CW |
| 509 | 17.9 | 14.1 | 785 | 8.0 | 111 | (3698) | 69.1 | CW |

| IG-22VM-SRY3714B-24 DC24V | | 起動電流 Starting current 322mA | | | | | | |
|------------------------------|---|--|-----------------------|-------|-------|------------------------------|--------------------|-------------------------------|
| 減速比 Reduction Ratio (1/i) | 無負荷回転数 No-Load Speed min ⁻¹ | 定格回転数 Rated Speed min ⁻¹ | 定格トルク Rated Torque | | | 起動トルク Starting Torque mNm | 長さ(L) Length mm | 回転方向 Direction of rotation |
| | | | mNm | kg·cm | oz·in | | | |
| 4 | 932 | 698 | 14.7 | 0.15 | 2.08 | (58.5) | 53.5 | CW |
| 16 | 233 | 173 | 49.0 | 0.5 | 6.95 | (190) | 58.7 | CW |
| 19 | 196 | 145 | 58.8 | 0.6 | 8.34 | (226) | 58.7 | CW |
| 22 | 165 | 123 | 68.6 | 0.7 | 9.72 | (270) | 58.7 | CW |
| 64 | 58.3 | 43.4 | 157 | 1.6 | 22.2 | (614) | 63.9 | CW |
| 76 | 49.1 | 35.9 | 196 | 2.0 | 27.8 | (729) | 63.9 | CW |
| 90 | 41.3 | 30.6 | 226 | 2.3 | 32.0 | (872) | 63.9 | CW |
| 107 | 34.8 | 25.5 | 275 | 2.8 | 38.9 | (1029) | 63.9 | CW |
| 256 | 14.6 | 10.6 | 539 | 5.5 | 76.4 | (1967) | 69.1 | CW |
| 304 | 12.3 | 8.96 | 637 | 6.5 | 90.3 | (2346) | 69.1 | CW |
| 361 | 10.3 | 7.55 | 755 | 7.7 | 107 | (2828) | 69.1 | CW |
| 428 | 8.70 | 6.65 | 785 | 8.0 | 111 | (3331) | 69.1 | CW |
| 509 | 7.32 | 5.87 | 785 | 8.0 | 111 | (3963) | 69.1 | CW |

| IG-22VM-SRY3715B-24 DC24V | | 起動電流 Starting current 1820mA | | | | | | |
|------------------------------|---|--|-----------------------|-------|-------|------------------------------|--------------------|-------------------------------|
| 減速比 Reduction Ratio (1/i) | 無負荷回転数 No-Load Speed min ⁻¹ | 定格回転数 Rated Speed min ⁻¹ | 定格トルク Rated Torque | | | 起動トルク Starting Torque mNm | 長さ(L) Length mm | 回転方向 Direction of rotation |
| | | | mNm | kg·cm | oz·in | | | |
| 4 | 1930 | 1650 | 24.5 | 0.25 | 3.47 | (169) | 53.5 | CW |
| 16 | 482 | 410 | 83.4 | 0.85 | 11.8 | (558) | 58.7 | CW |
| 19 | 406 | 346 | 98.1 | 1.0 | 13.9 | (664) | 58.7 | CW |
| 22 | 342 | 291 | 118 | 1.2 | 16.7 | (791) | 58.7 | CW |
| 64 | 121 | 102 | 275 | 2.8 | 38.9 | (1751) | 63.9 | CW |
| 76 | 101 | 85.6 | 333 | 3.4 | 47.2 | (2184) | 63.9 | CW |
| 90 | 85.5 | 72.2 | 392 | 4.0 | 55.6 | (2520) | 63.9 | CW |
| 107 | 72.0 | 60.7 | 471 | 4.8 | 66.7 | (3001) | 63.9 | CW |
| 256 | 30.1 | 26.1 | 785 | 8.0 | 111 | (5907) | 69.1 | CW |
| 304 | 25.4 | 22.5 | 785 | 8.0 | 111 | (6876) | 69.1 | CW |
| 361 | 21.4 | 19.3 | 785 | 8.0 | 111 | (8000) | 69.1 | CW |
| 428 | 18.0 | 16.5 | 785 | 8.0 | 111 | (9420) | 69.1 | CW |
| 509 | 15.2 | 14.1 | 785 | 8.0 | 111 | (10847) | 69.1 | CW |

：標準品 Standard
：特注品 Custom-made

1. 上記データは参考値です。
2. 上記スペックは一例で、要望スペックにて承ります。

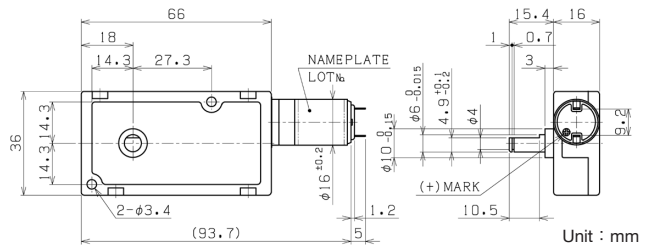
The above data is for reference only.
The above specifications are an example and your specifications are welcomed.

36 × 66 ギヤードモータ Gear Motor

コアレスモータ Coreless Motor

コアレスモータ Coreless Motor **SCR16-25 × ×** page46

スパーギヤヘッド Spur Gearhead **RTJ-100** page78



Unit : mm

| RTJ-100-SR2503A-06 | | DC6V | | 起動電流 Starting current 319mA | | | | |
|------------------------------|---|--|-----------------------|-----------------------------|-------|----------------------------------|--------------------|-----------------------------------|
| 減速比 Reduction Ratio (1/i) | 無負荷 回転数 No-Load Speed min ⁻¹ | 定格 回転数 Rated Speed min ⁻¹ | 定格トルク Rated Torque | | | 起動 トルク Starting Torque mNm | 長さ(L) Length mm | 回転 方向 Direction of rotation |
| | | | mNm | kg·cm | oz·in | | | |
| 151 | 38.7 | 32.9 | 39.2 | 0.40 | 5.56 | (262) | 図示 | CCW |
| 303 | 19.3 | 16.4 | 44.1 | 0.45 | 6.25 | (293) | 図示 | CCW |
| 376 | 15.6 | 13.2 | 53.9 | 0.55 | 7.64 | (350) | 図示 | CCW |
| 908 | 6.45 | 5.43 | 137 | 1.4 | 19.4 | (866) | 図示 | CCW |

| RTJ-100-SR2506A-06 | | DC6V | | 起動電流 Starting current 612mA | | | | |
|------------------------------|---|--|-----------------------|-----------------------------|-------|----------------------------------|--------------------|-----------------------------------|
| 減速比 Reduction Ratio (1/i) | 無負荷 回転数 No-Load Speed min ⁻¹ | 定格 回転数 Rated Speed min ⁻¹ | 定格トルク Rated Torque | | | 起動 トルク Starting Torque mNm | 長さ(L) Length mm | 回転 方向 Direction of rotation |
| | | | mNm | kg·cm | oz·in | | | |
| 151 | 44.9 | 39.9 | 49.0 | 0.50 | 6.95 | (440) | 図示 | CCW |
| 303 | 22.4 | 19.9 | 53.9 | 0.55 | 7.64 | (483) | 図示 | CCW |
| 376 | 18.1 | 16.0 | 68.6 | 0.7 | 9.72 | (591) | 図示 | CCW |
| 908 | 7.49 | 6.67 | 157 | 1.6 | 22.2 | (1434) | 図示 | CCW |

| RTJ-100-SR2501A-06 | | DC6V | | 起動電流 Starting current 722mA | | | | |
|------------------------------|---|--|-----------------------|-----------------------------|-------|----------------------------------|--------------------|-----------------------------------|
| 減速比 Reduction Ratio (1/i) | 無負荷 回転数 No-Load Speed min ⁻¹ | 定格 回転数 Rated Speed min ⁻¹ | 定格トルク Rated Torque | | | 起動 トルク Starting Torque mNm | 長さ(L) Length mm | 回転 方向 Direction of rotation |
| | | | mNm | kg·cm | oz·in | | | |
| 151 | 71.3 | 60.3 | 49.0 | 0.50 | 6.95 | (318) | 図示 | CCW |
| 303 | 35.6 | 30.2 | 53.9 | 0.55 | 7.64 | (355) | 図示 | CCW |
| 376 | 28.7 | 24.2 | 68.6 | 0.7 | 9.72 | (438) | 図示 | CCW |
| 908 | 11.9 | 10.1 | 157 | 1.6 | 22.2 | (1038) | 図示 | CCW |

| RTJ-100-SR2504A-12 | | DC12V | | 起動電流 Starting current 219mA | | | | |
|------------------------------|---|--|-----------------------|-----------------------------|-------|----------------------------------|--------------------|-----------------------------------|
| 減速比 Reduction Ratio (1/i) | 無負荷 回転数 No-Load Speed min ⁻¹ | 定格 回転数 Rated Speed min ⁻¹ | 定格トルク Rated Torque | | | 起動 トルク Starting Torque mNm | 長さ(L) Length mm | 回転 方向 Direction of rotation |
| | | | mNm | kg·cm | oz·in | | | |
| 151 | 52.3 | 44.2 | 39.2 | 0.40 | 5.56 | (253) | 図示 | CCW |
| 303 | 26.1 | 22.0 | 44.1 | 0.45 | 6.25 | (281) | 図示 | CCW |
| 376 | 21.0 | 17.7 | 53.9 | 0.55 | 7.64 | (343) | 図示 | CCW |
| 908 | 8.71 | 7.29 | 137 | 1.4 | 19.4 | (840) | 図示 | CCW |

| RTJ-100-SR2502A-12 | | DC12V | | 起動電流 Starting current 436mA | | | | |
|------------------------------|---|--|-----------------------|-----------------------------|-------|----------------------------------|--------------------|-----------------------------------|
| 減速比 Reduction Ratio (1/i) | 無負荷 回転数 No-Load Speed min ⁻¹ | 定格 回転数 Rated Speed min ⁻¹ | 定格トルク Rated Torque | | | 起動 トルク Starting Torque mNm | 長さ(L) Length mm | 回転 方向 Direction of rotation |
| | | | mNm | kg·cm | oz·in | | | |
| 151 | 70.0 | 58.6 | 63.7 | 0.65 | 9.03 | (391) | 図示 | CCW |
| 303 | 35.0 | 29.0 | 73.5 | 0.75 | 10.4 | (429) | 図示 | CCW |
| 376 | 28.1 | 23.5 | 88.3 | 0.9 | 12.5 | (539) | 図示 | CCW |
| 908 | 11.7 | 9.91 | 196 | 2.0 | 27.8 | (1281) | 図示 | CCW |

| RTJ-100-SR2512A-12 | | DC12V | | 起動電流 Starting current 1400mA | | | | |
|------------------------------|---|--|-----------------------|------------------------------|-------|----------------------------------|--------------------|-----------------------------------|
| 減速比 Reduction Ratio (1/i) | 無負荷 回転数 No-Load Speed min ⁻¹ | 定格 回転数 Rated Speed min ⁻¹ | 定格トルク Rated Torque | | | 起動 トルク Starting Torque mNm | 長さ(L) Length mm | 回転 方向 Direction of rotation |
| | | | mNm | kg·cm | oz·in | | | |
| 151 | 106 | 90.7 | 118 | 1.2 | 16.7 | (818) | 図示 | CCW |
| 303 | 52.8 | 44.9 | 137 | 1.4 | 19.4 | (916) | 図示 | CCW |
| 376 | 42.5 | 36.3 | 167 | 1.7 | 23.6 | (1145) | 図示 | CCW |
| 908 | 17.6 | 16.4 | 196 | 2.0 | 27.8 | (2875) | 図示 | CCW |

| RTJ-100-SR2507A-24 | | DC24V | | 起動電流 Starting current 359mA | | | | |
|------------------------------|---|--|-----------------------|-----------------------------|-------|----------------------------------|--------------------|-----------------------------------|
| 減速比 Reduction Ratio (1/i) | 無負荷 回転数 No-Load Speed min ⁻¹ | 定格 回転数 Rated Speed min ⁻¹ | 定格トルク Rated Torque | | | 起動 トルク Starting Torque mNm | 長さ(L) Length mm | 回転 方向 Direction of rotation |
| | | | mNm | kg·cm | oz·in | | | |
| 151 | 83.9 | 71.4 | 78.5 | 0.8 | 11.1 | (527) | 図示 | CCW |
| 303 | 41.9 | 35.6 | 88.3 | 0.9 | 12.5 | (587) | 図示 | CCW |
| 376 | 33.7 | 28.7 | 108 | 1.1 | 15.3 | (728) | 図示 | CCW |
| 908 | 14.0 | 12.4 | 196 | 2.0 | 27.8 | (1715) | 図示 | CCW |

標準品 Standard

特注品 Custom-made

1. 上記データは参考値です。

2. 上記スペックは一例で、要望スペックにて承ります。

The above data is for reference only.

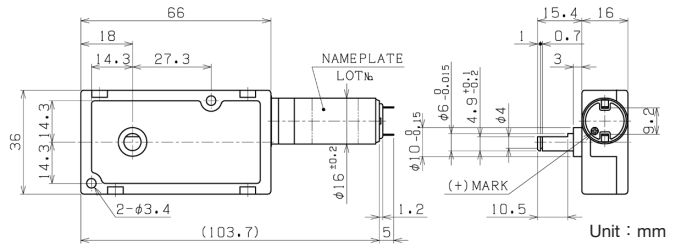
The above specifications are an example and your specifications are welcomed.

36 × 66 ギヤードモータ Gear Motor

コアレスモータ Coreless Motor

コアレスモータ Coreless Motor **SCR16-35 × ×** page47

スパーギヤヘッド Spur Gearhead **RTJ-100** page78



| RTJ-100-SR3505A-06 | | DC6V | | 起動電流 Starting current 534mA | | | | | | |
|---------------------------------|--|---|-----------------------|-----------------------------|-------|-------------------------------------|-----------------------|-----------------------------------|--|--|
| 減速比 Reduction Ratio (1/i) | 無負荷 回転数 No-Load Speed min ⁻¹ | 定格 回転数 Rated Speed min ⁻¹ | 定格トルク Rated Torque | | | 起動 トルク Starting Torque mNm | 長さ(L) Length mm | 回転 方向 Direction of rotation | | |
| | | | mNm | kg·cm | oz·in | | | | | |
| 151 | 32.0 | 27.6 | 73.5 | 0.75 | 10.4 | (535) | 図示 | CCW | | |
| 303 | 16.0 | 13.8 | 78.5 | 0.8 | 11.1 | (571) | 図示 | CCW | | |
| 376 | 12.9 | 11.1 | 98.1 | 1.0 | 13.9 | (703) | 図示 | CCW | | |
| 908 | 5.34 | 4.74 | 196 | 2.0 | 27.8 | (1744) | 図示 | CCW | | |

| RTJ-100-SR3501A-06 | | DC6V | | 起動電流 Starting current 1500mA | | | | | | |
|---------------------------------|--|---|-----------------------|------------------------------|-------|-------------------------------------|-----------------------|-----------------------------------|--|--|
| 減速比 Reduction Ratio (1/i) | 無負荷 回転数 No-Load Speed min ⁻¹ | 定格 回転数 Rated Speed min ⁻¹ | 定格トルク Rated Torque | | | 起動 トルク Starting Torque mNm | 長さ(L) Length mm | 回転 方向 Direction of rotation | | |
| | | | mNm | kg·cm | oz·in | | | | | |
| 151 | 40.2 | 36.2 | 118 | 1.2 | 16.7 | (1186) | 図示 | CCW | | |
| 303 | 20.1 | 18.0 | 137 | 1.4 | 19.4 | (1311) | 図示 | CCW | | |
| 376 | 16.2 | 14.5 | 167 | 1.7 | 23.6 | (1591) | 図示 | CCW | | |
| 908 | 6.71 | 6.37 | 196 | 2.0 | 27.8 | (3868) | 図示 | CCW | | |

| RTJ-100-SR3502A-12 | | DC12V | | 起動電流 Starting current 862mA | | | | | | |
|---------------------------------|--|---|-----------------------|-----------------------------|-------|-------------------------------------|-----------------------|-----------------------------------|--|--|
| 減速比 Reduction Ratio (1/i) | 無負荷 回転数 No-Load Speed min ⁻¹ | 定格 回転数 Rated Speed min ⁻¹ | 定格トルク Rated Torque | | | 起動 トルク Starting Torque mNm | 長さ(L) Length mm | 回転 方向 Direction of rotation | | |
| | | | mNm | kg·cm | oz·in | | | | | |
| 151 | 55.0 | 46.8 | 147 | 1.5 | 20.8 | (986) | 図示 | CCW | | |
| 303 | 27.4 | 23.8 | 147 | 1.5 | 20.8 | (1119) | 図示 | CCW | | |
| 376 | 22.1 | 18.9 | 196 | 2.0 | 27.8 | (1354) | 図示 | CCW | | |
| 908 | 9.16 | 8.62 | 196 | 2.0 | 27.8 | (3325) | 図示 | CCW | | |

| RTJ-100-SR3506A-12 | | DC12V | | 起動電流 Starting current 1260mA | | | | | | |
|---------------------------------|--|---|-----------------------|------------------------------|-------|-------------------------------------|-----------------------|-----------------------------------|--|--|
| 減速比 Reduction Ratio (1/i) | 無負荷 回転数 No-Load Speed min ⁻¹ | 定格 回転数 Rated Speed min ⁻¹ | 定格トルク Rated Torque | | | 起動 トルク Starting Torque mNm | 長さ(L) Length mm | 回転 方向 Direction of rotation | | |
| | | | mNm | kg·cm | oz·in | | | | | |
| 151 | 70.7 | 63.1 | 118 | 1.2 | 16.7 | (1098) | 図示 | CCW | | |
| 303 | 35.3 | 31.6 | 127 | 1.3 | 18.1 | (1212) | 図示 | CCW | | |
| 376 | 28.4 | 25.5 | 157 | 1.6 | 22.2 | (1538) | 図示 | CCW | | |
| 908 | 11.8 | 11.2 | 196 | 2.0 | 27.8 | (3855) | 図示 | CCW | | |

| RTJ-100-SR3504A-24 | | DC24V | | 起動電流 Starting current 624mA | | | | | | |
|---------------------------------|--|---|-----------------------|-----------------------------|-------|-------------------------------------|-----------------------|-----------------------------------|--|--|
| 減速比 Reduction Ratio (1/i) | 無負荷 回転数 No-Load Speed min ⁻¹ | 定格 回転数 Rated Speed min ⁻¹ | 定格トルク Rated Torque | | | 起動 トルク Starting Torque mNm | 長さ(L) Length mm | 回転 方向 Direction of rotation | | |
| | | | mNm | kg·cm | oz·in | | | | | |
| 151 | 81.3 | 74.4 | 78.5 | 0.8 | 11.1 | (925) | 図示 | CCW | | |
| 303 | 40.6 | 37.1 | 88.3 | 0.9 | 12.5 | (1024) | 図示 | CCW | | |
| 376 | 32.7 | 29.9 | 108 | 1.1 | 15.3 | (1261) | 図示 | CCW | | |
| 908 | 13.5 | 12.7 | 196 | 2.0 | 27.8 | (3308) | 図示 | CCW | | |

| RTJ-100-SR3509A-24 | | DC24V | | 起動電流 Starting current 748mA | | | | | | |
|---------------------------------|--|---|-----------------------|-----------------------------|-------|-------------------------------------|-----------------------|-----------------------------------|--|--|
| 減速比 Reduction Ratio (1/i) | 無負荷 回転数 No-Load Speed min ⁻¹ | 定格 回転数 Rated Speed min ⁻¹ | 定格トルク Rated Torque | | | 起動 トルク Starting Torque mNm | 長さ(L) Length mm | 回転 方向 Direction of rotation | | |
| | | | mNm | kg·cm | oz·in | | | | | |
| 151 | 78.6 | 73.6 | 78.5 | 0.8 | 11.1 | (1234) | 図示 | CCW | | |
| 303 | 39.3 | 36.7 | 88.3 | 0.9 | 12.5 | (1335) | 図示 | CCW | | |
| 376 | 31.6 | 29.6 | 108 | 1.1 | 15.3 | (1706) | 図示 | CCW | | |
| 908 | 13.1 | 12.5 | 196 | 2.0 | 27.8 | (4279) | 図示 | CCW | | |

■ : 標準品 Standard 1. 上記データは参考値です。
 ■ : 特注品 Custom-made 2. 上記スペックは一例で、要望スペックにて承ります。

The above data is for reference only.
 The above specifications are an example and your specifications are welcomed.

索引 INDEX

選定 Selection Guide

技術情報 Technical Information

モータ Motor

Brushless Coreless

ブラシレス ブラシレス

エンコーダ Encoder

Magnetic 磁気

Optical 光学

ギヤヘッド Gearhead

Planetary 遊星

Spur スパー

Brushless ブラシレス

Coreless コアレス

Iron Core コアード

NOTE

