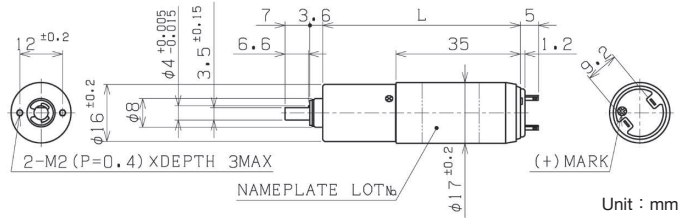


φ 17ギヤードモータ Gear Motor

コアレスモータ Coreless Motor

コアレスモータ Coreless Motor **SCR17-35 × ×** page49

遊星ギヤヘッド Planetary Gearhead **IG-16** page69



| IG-16GM-SRU3551B-06 DC6V | | 起動電流 Starting current 1040mA | | | | | | |
|------------------------------|---|--|-----------------------|-------|-------|------------------------------|--------------------|-------------------------------|
| 減速比 Reduction Ratio (1/i) | 無負荷回転数 No-Load Speed min ⁻¹ | 定格回転数 Rated Speed min ⁻¹ | 定格トルク Rated Torque | | | 起動トルク Starting Torque mNm | 長さ(L) Length mm | 回転方向 Direction of rotation |
| | | | mNm | kg·cm | oz·in | | | |
| 4 | 1030 | 788 | 9.81 | 0.10 | 1.39 | (41.8) | 52.4 | CW |
| 15 | 299 | 223 | 29.4 | 0.30 | 4.17 | (116) | 52.4 | CW |
| 23 | 195 | 147 | 44.1 | 0.45 | 6.25 | (179) | 52.4 | CW |
| 61 | 75.7 | 56.5 | 93.2 | 0.95 | 13.2 | (367) | 55.6 | CW |
| 107 | 43.3 | 36.7 | 98.1 | 1.0 | 13.9 | (644) | 55.6 | CW |
| 242 | 19.2 | 16.8 | 147 | 1.5 | 20.8 | (1176) | 58.8 | CW |
| 326 | 14.3 | 12.9 | 147 | 1.5 | 20.8 | (1502) | 58.8 | CW |
| 410 | 11.4 | 10.2 | 196 | 2.0 | 27.8 | (1862) | 58.8 | CW |
| 483 | 9.63 | 8.82 | 196 | 2.0 | 27.8 | (2330) | 58.8 | CW |

| IG-16GM-SRU3552B-06 DC6V | | 起動電流 Starting current 827mA | | | | | | |
|------------------------------|---|--|-----------------------|-------|-------|------------------------------|--------------------|-------------------------------|
| 減速比 Reduction Ratio (1/i) | 無負荷回転数 No-Load Speed min ⁻¹ | 定格回転数 Rated Speed min ⁻¹ | 定格トルク Rated Torque | | | 起動トルク Starting Torque mNm | 長さ(L) Length mm | 回転方向 Direction of rotation |
| | | | mNm | kg·cm | oz·in | | | |
| 4 | 864 | 670 | 8.83 | 0.09 | 1.25 | (39.3) | 52.4 | CW |
| 15 | 250 | 194 | 24.5 | 0.25 | 3.47 | (109) | 52.4 | CW |
| 23 | 163 | 125 | 39.2 | 0.4 | 5.56 | (168) | 52.4 | CW |
| 61 | 63.2 | 49.1 | 78.5 | 0.8 | 11.1 | (352) | 55.6 | CW |
| 107 | 36.2 | 30.4 | 98.1 | 1.0 | 13.9 | (612) | 55.6 | CW |
| 242 | 16.0 | 13.9 | 147 | 1.5 | 20.8 | (1120) | 58.8 | CW |
| 326 | 11.9 | 10.8 | 147 | 1.5 | 20.8 | (1590) | 58.8 | CW |
| 410 | 9.48 | 8.51 | 196 | 2.0 | 27.8 | (1916) | 58.8 | CW |
| 483 | 8.04 | 7.34 | 196 | 2.0 | 27.8 | (2251) | 58.8 | CW |

| IG-16GM-SRU3551B-12 DC12V | | 起動電流 Starting current 2270mA | | | | | | |
|------------------------------|---|--|-----------------------|-------|-------|------------------------------|--------------------|-------------------------------|
| 減速比 Reduction Ratio (1/i) | 無負荷回転数 No-Load Speed min ⁻¹ | 定格回転数 Rated Speed min ⁻¹ | 定格トルク Rated Torque | | | 起動トルク Starting Torque mNm | 長さ(L) Length mm | 回転方向 Direction of rotation |
| | | | mNm | kg·cm | oz·in | | | |
| 4 | 2140 | 1910 | 9.81 | 0.10 | 1.39 | (91.3) | 52.4 | CW |
| 15 | 619 | 549 | 29.4 | 0.30 | 4.17 | (260) | 52.4 | CW |
| 23 | 404 | 359 | 44.1 | 0.45 | 6.25 | (396) | 52.4 | CW |
| 61 | 157 | 139 | 93.2 | 0.95 | 13.2 | (813) | 55.6 | CW |
| 107 | 89.7 | 83.6 | 98.1 | 1.0 | 13.9 | (1443) | 55.6 | CW |
| 242 | 39.7 | 37.5 | 147 | 1.5 | 20.8 | (2653) | 58.8 | CW |
| 326 | 29.5 | 28.3 | 147 | 1.5 | 20.8 | (3614) | 58.8 | CW |
| 410 | 23.5 | 22.5 | 196 | 2.0 | 27.8 | (4606) | 58.8 | CW |
| 483 | 19.9 | 19.2 | 196 | 2.0 | 27.8 | (5572) | 58.8 | CW |

| IG-16GM-SRU3553B-12 DC12V | | 起動電流 Starting current 1310mA | | | | | | |
|------------------------------|---|--|-----------------------|-------|-------|------------------------------|--------------------|-------------------------------|
| 減速比 Reduction Ratio (1/i) | 無負荷回転数 No-Load Speed min ⁻¹ | 定格回転数 Rated Speed min ⁻¹ | 定格トルク Rated Torque | | | 起動トルク Starting Torque mNm | 長さ(L) Length mm | 回転方向 Direction of rotation |
| | | | mNm | kg·cm | oz·in | | | |
| 4 | 1570 | 1240 | 14.7 | 0.15 | 2.08 | (69.9) | 52.4 | CW |
| 15 | 454 | 352 | 44.1 | 0.45 | 6.25 | (196) | 52.4 | CW |
| 23 | 297 | 248 | 49.0 | 0.50 | 6.95 | (297) | 52.4 | CW |
| 61 | 115 | 96.9 | 98.1 | 1.0 | 13.9 | (623) | 55.6 | CW |
| 107 | 65.9 | 59.9 | 98.1 | 1.0 | 13.9 | (1077) | 55.6 | CW |
| 242 | 29.2 | 27.0 | 147 | 1.5 | 20.8 | (1951) | 58.8 | CW |
| 326 | 21.7 | 20.5 | 147 | 1.5 | 20.8 | (2658) | 58.8 | CW |
| 410 | 17.3 | 16.3 | 196 | 2.0 | 27.8 | (3391) | 58.8 | CW |
| 483 | 14.6 | 13.9 | 196 | 2.0 | 27.8 | (4088) | 58.8 | CW |

| IG-16GM-SRU3554B-12 DC12V | | 起動電流 Starting current 951mA | | | | | | |
|------------------------------|---|--|-----------------------|-------|-------|------------------------------|--------------------|-------------------------------|
| 減速比 Reduction Ratio (1/i) | 無負荷回転数 No-Load Speed min ⁻¹ | 定格回転数 Rated Speed min ⁻¹ | 定格トルク Rated Torque | | | 起動トルク Starting Torque mNm | 長さ(L) Length mm | 回転方向 Direction of rotation |
| | | | mNm | kg·cm | oz·in | | | |
| 4 | 1290 | 1090 | 9.81 | 0.10 | 1.39 | (63.3) | 52.4 | CW |
| 15 | 373 | 291 | 39.2 | 0.40 | 5.56 | (178) | 52.4 | CW |
| 23 | 243 | 200 | 49.0 | 0.50 | 6.95 | (277) | 52.4 | CW |
| 61 | 94.4 | 78.1 | 98.1 | 1.0 | 13.9 | (568) | 55.6 | CW |
| 107 | 54.0 | 48.7 | 98.1 | 1.0 | 13.9 | (1000) | 55.6 | CW |
| 242 | 23.9 | 22.0 | 147 | 1.5 | 20.8 | (1849) | 58.8 | CW |
| 326 | 17.8 | 16.7 | 147 | 1.5 | 20.8 | (2379) | 58.8 | CW |
| 410 | 14.2 | 13.3 | 196 | 2.0 | 27.8 | (3092) | 58.8 | CW |
| 483 | 12.0 | 11.4 | 196 | 2.0 | 27.8 | (3920) | 58.8 | CW |

| IG-16GM-SRU3560B-24 DC24V | | 起動電流 Starting current 855mA | | | | | | |
|------------------------------|---|--|-----------------------|-------|-------|------------------------------|--------------------|-------------------------------|
| 減速比 Reduction Ratio (1/i) | 無負荷回転数 No-Load Speed min ⁻¹ | 定格回転数 Rated Speed min ⁻¹ | 定格トルク Rated Torque | | | 起動トルク Starting Torque mNm | 長さ(L) Length mm | 回転方向 Direction of rotation |
| | | | mNm | kg·cm | oz·in | | | |
| 4 | 1840 | 1590 | 9.81 | 0.10 | 1.39 | (72.2) | 52.4 | CW |
| 15 | 530 | 430 | 39.2 | 0.40 | 5.56 | (208) | 52.4 | CW |
| 23 | 346 | 293 | 49.0 | 0.50 | 6.95 | (320) | 52.4 | CW |
| 61 | 134 | 114 | 98.1 | 1.0 | 13.9 | (657) | 55.6 | CW |
| 107 | 76.9 | 70.3 | 98.1 | 1.0 | 13.9 | (1143) | 55.6 | CW |
| 242 | 34.0 | 31.7 | 147 | 1.5 | 20.8 | (2173) | 58.8 | CW |
| 326 | 25.3 | 24.0 | 147 | 1.5 | 20.8 | (2861) | 58.8 | CW |
| 410 | 20.1 | 19.0 | 196 | 2.0 | 27.8 | (3581) | 58.8 | CW |
| 483 | 17.1 | 16.3 | 196 | 2.0 | 27.8 | (4190) | 58.8 | CW |

| IG-16GM-SRU3557B-24 DC24V | | 起動電流 Starting current 692mA | | | | | | |
|------------------------------|---|--|-----------------------|-------|-------|------------------------------|--------------------|-------------------------------|
| 減速比 Reduction Ratio (1/i) | 無負荷回転数 No-Load Speed min ⁻¹ | 定格回転数 Rated Speed min ⁻¹ | 定格トルク Rated Torque | | | 起動トルク Starting Torque mNm | 長さ(L) Length mm | 回転方向 Direction of rotation |
| | | | mNm | kg·cm | oz·in | | | |
| 4 | 1510 | 1230 | 14.7 | 0.15 | 2.08 | (79.3) | 52.4 | CW |
| 15 | 437 | 350 | 44.1 | 0.45 | 6.25 | (222) | 52.4 | CW |
| 23 | 285 | 244 | 49.0 | 0.50 | 6.95 | (341) | 52.4 | CW |
| 61 | 111 | 95.2 | 98.1 | 1.0 | 13.9 | (689) | 55.6 | CW |
| 107 | 63.4 | 58.3 | 98.1 | 1.0 | 13.9 | (1220) | 55.6 | CW |
| 242 | 28.1 | 26.2 | 147 | 1.5 | 20.8 | (2174) | 58.8 | CW |
| 326 | 20.9 | 19.8 | 147 | 1.5 | 20.8 | (2793) | 58.8 | CW |
| 410 | 16.6 | 15.8 | 196 | 2.0 | 27.8 | (4067) | 58.8 | CW |
| 483 | 14.1 | 13.5 | 196 | 2.0 | 27.8 | (4606) | 58.8 | CW |

| IG-16GM-SRU3554B-24 DC24V | | 起動電流 Starting current 2020mA | | | | | | |
|------------------------------|---|--|-----------------------|-------|-------|------------------------------|--------------------|-------------------------------|
| 減速比 Reduction Ratio (1/i) | 無負荷回転数 No-Load Speed min ⁻¹ | 定格回転数 Rated Speed min ⁻¹ | 定格トルク Rated Torque | | | 起動トルク Starting Torque mNm | 長さ(L) Length mm | 回転方向 Direction of rotation |
| | | | mNm | kg·cm | oz·in | | | |
| 4 | 2520 | 2360 | 9.81 | 0.10 | 1.39 | (155) | 52.4 | CW |
| 15 | 728 | 660 | 39.2 | 0.40 | 5.56 | (420) | 52.4 | CW |
| 23 | 475 | 439 | 49.0 | 0.50 | 6.95 | (647) | 52.4 | CW |
| 61 | 184 | 171 | 98.1 | 1.0 | 13.9 | (1388) | 55.6 | CW |
| 107 | 105 | 101 | 98.1 | 1.0 | 13.9 | (2575) | 55.6 | CW |
| 242 | 46.7 | 45.1 | 147 | 1.5 | 20.8 | (4291) | 58.8 | CW |
| 326 | 34.7 | 33.8 | 147 | 1.5 | 20.8 | (5668) | 58.8 | CW |
| 410 | 27.7 | 26.9 | 196 | 2.0 | 27.8 | (6786) | 58.8 | CW |
| 483 | 23.4 | 22.9 | 196 | 2.0 | 27.8 | (9173) | 58.8 | CW |

標準品 Standard

特注品 Custom-made

1. 上記データは参考値です。

2. 上記スペックは一例で、要望スペックにて承ります。

The above data is for reference only.

The above specifications are an example and your specifications are welcomed.