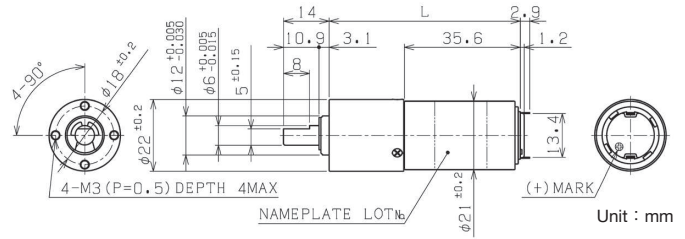


# φ 22ギヤードモータ Gear Motor

# コアレスモータ Coreless Motor

コアレスモータ Coreless Motor SC21-37 × × page51

遊星ギヤヘッド Planetary Gearhead IG-22V page72



IG-22VM-SRY3702B-06 DC6V		起動電流 Starting current 2060mA						
減速比 Reduction Ratio (1/i)	無負荷回転数 No-Load Speed min <sup>-1</sup>	定格回転数 Rated Speed min <sup>-1</sup>	定格トルク Rated Torque			起動トルク Starting Torque mNm	長さ(L) Length mm	回転方向 Direction of rotation
			mNm	kg·cm	oz·in			
4	1630	1310	9.81	0.10	1.39	(50.0)	53.5	CW
16	408	310	39.2	0.40	5.56	(163)	58.7	CW
19	343	257	49.0	0.50	6.95	(195)	58.7	CW
22	289	222	53.9	0.55	7.64	(232)	58.7	CW
64	102	77.2	127	1.3	18.1	(522)	63.9	CW
76	85.8	64.3	157	1.6	22.2	(627)	63.9	CW
90	72.3	54.1	186	1.9	26.4	(739)	63.9	CW
107	60.9	46.0	216	2.2	30.6	(883)	63.9	CW
256	25.5	19.0	431	4.4	61.1	(1691)	69.1	CW
304	21.5	16.1	510	5.2	72.2	(2031)	69.1	CW
361	18.1	13.5	608	6.2	86.1	(2392)	69.1	CW
428	15.2	11.4	716	7.3	101	(2864)	69.1	CW
509	12.8	9.85	785	8.0	111	(3406)	69.1	CW

IG-22VM-SRY3703B-12 DC12V		起動電流 Starting current 2300mA						
減速比 Reduction Ratio (1/i)	無負荷回転数 No-Load Speed min <sup>-1</sup>	定格回転数 Rated Speed min <sup>-1</sup>	定格トルク Rated Torque			起動トルク Starting Torque mNm	長さ(L) Length mm	回転方向 Direction of rotation
			mNm	kg·cm	oz·in			
4	2010	1820	9.81	0.10	1.39	(104)	53.5	CW
16	504	435	44.1	0.45	6.25	(322)	58.7	CW
19	424	365	53.9	0.55	7.64	(387)	58.7	CW
22	357	308	63.7	0.65	9.03	(464)	58.7	CW
64	126	108	147	1.5	20.8	(1029)	63.9	CW
76	106	91.0	177	1.8	25.0	(1251)	63.9	CW
90	89.3	76.8	206	2.1	29.2	(1472)	63.9	CW
107	75.2	64.7	245	2.5	34.7	(1755)	63.9	CW
256	31.5	27.0	481	4.9	68.1	(3367)	69.1	CW
304	26.5	22.8	569	5.8	80.6	(4075)	69.1	CW
361	22.3	19.2	677	6.9	95.9	(4870)	69.1	CW
428	18.8	16.2	785	8.0	111	(5676)	69.1	CW
509	15.8	14.0	785	8.0	111	(6891)	69.1	CW

IG-22VM-SRY3705B-12 DC12V		起動電流 Starting current 1550mA						
減速比 Reduction Ratio (1/i)	無負荷回転数 No-Load Speed min <sup>-1</sup>	定格回転数 Rated Speed min <sup>-1</sup>	定格トルク Rated Torque			起動トルク Starting Torque mNm	長さ(L) Length mm	回転方向 Direction of rotation
			mNm	kg·cm	oz·in			
4	1720	1510	9.81	0.10	1.39	(80.3)	53.5	CW
16	430	356	44.1	0.45	6.25	(256)	58.7	CW
19	362	298	53.9	0.55	7.64	(305)	58.7	CW
22	305	251	63.7	0.65	9.03	(360)	58.7	CW
64	108	88.4	147	1.5	20.8	(810)	63.9	CW
76	90.6	74.2	177	1.8	25.0	(978)	63.9	CW
90	76.3	62.8	206	2.1	29.2	(1164)	63.9	CW
107	64.2	52.8	245	2.5	34.7	(1380)	63.9	CW
256	26.9	22.1	481	4.9	68.1	(2696)	69.1	CW
304	22.6	18.6	569	5.8	80.6	(3215)	69.1	CW
361	19.1	15.6	677	6.9	95.9	(3694)	69.1	CW
428	16.1	13.2	785	8.0	111	(4358)	69.1	CW
509	13.5	11.5	785	8.0	111	(5299)	69.1	CW

IG-22VM-SRY3712B-12 DC12V		起動電流 Starting current 379mA						
減速比 Reduction Ratio (1/i)	無負荷回転数 No-Load Speed min <sup>-1</sup>	定格回転数 Rated Speed min <sup>-1</sup>	定格トルク Rated Torque			起動トルク Starting Torque mNm	長さ(L) Length mm	回転方向 Direction of rotation
			mNm	kg·cm	oz·in			
4	599	437	14.7	0.15	2.08	(54.4)	53.5	CW
16	150	108	49.0	0.5	6.95	(175)	58.7	CW
19	126	90.8	58.8	0.6	8.34	(210)	58.7	CW
22	106	77.0	68.6	0.7	9.72	(251)	58.7	CW
64	37.4	27.1	157	1.6	22.2	(570)	63.9	CW
76	31.5	22.4	196	2.0	27.8	(678)	63.9	CW
90	26.5	19.1	226	2.3	32.0	(809)	63.9	CW
107	22.4	15.9	275	2.8	38.9	(948)	63.9	CW
256	9.36	6.63	539	5.5	76.4	(1848)	69.1	CW
304	7.88	5.59	637	6.5	90.3	(2192)	69.1	CW
361	6.64	4.71	755	7.7	107	(2598)	69.1	CW
428	5.59	4.17	785	8.0	111	(3090)	69.1	CW
509	4.71	3.70	785	8.0	111	(3661)	69.1	CW

IG-22VM-SRY3713B-12 DC12V		起動電流 Starting current 2140mA						
減速比 Reduction Ratio (1/i)	無負荷回転数 No-Load Speed min <sup>-1</sup>	定格回転数 Rated Speed min <sup>-1</sup>	定格トルク Rated Torque			起動トルク Starting Torque mNm	長さ(L) Length mm	回転方向 Direction of rotation
			mNm	kg·cm	oz·in			
4	2060	1630	19.6	0.20	2.78	(93.9)	53.5	CW
16	515	398	68.6	0.70	9.72	(302)	58.7	CW
19	433	333	83.4	0.85	11.8	(361)	58.7	CW
22	365	282	98.1	1.0	13.9	(431)	58.7	CW
64	129	99.0	226	2.3	32.0	(972)	63.9	CW
76	108	82.7	275	2.8	38.9	(1174)	63.9	CW
90	91.2	69.8	324	3.3	45.8	(1381)	63.9	CW
107	76.8	58.9	382	3.9	54.2	(1639)	63.9	CW
256	32.2	24.5	755	7.7	107	(3157)	69.1	CW
304	27.1	21.4	785	8.0	111	(3732)	69.1	CW
361	22.8	18.8	785	8.0	111	(4475)	69.1	CW
428	19.2	16.4	785	8.0	111	(5383)	69.1	CW
509	16.2	14.2	785	8.0	111	(6359)	69.1	CW

IG-22VM-SRY3710B-24 DC24V		起動電流 Starting current 749mA						
減速比 Reduction Ratio (1/i)	無負荷回転数 No-Load Speed min <sup>-1</sup>	定格回転数 Rated Speed min <sup>-1</sup>	定格トルク Rated Torque			起動トルク Starting Torque mNm	長さ(L) Length mm	回転方向 Direction of rotation
			mNm	kg·cm	oz·in			
4	2270	1870	9.81	0.10	1.39	(55.7)	53.5	CW
16	568	445	39.2	0.40	5.56	(181)	58.7	CW
19	478	369	49.0	0.50	6.95	(215)	58.7	CW
22	403	318	53.9	0.55	7.64	(256)	58.7	CW
64	142	111	127	1.3	18.1	(582)	63.9	CW
76	120	92.4	157	1.6	22.2	(683)	63.9	CW
90	101	77.8	186	1.9	26.4	(810)	63.9	CW
107	84.8	66.0	216	2.2	30.6	(974)	63.9	CW
256	35.5	27.4	431	4.4	61.1	(1889)	69.1	CW
304	29.9	23.1	510	5.2	72.2	(2243)	69.1	CW
361	25.2	19.4	608	6.2	86.1	(2642)	69.1	CW
428	21.2	16.4	716	7.3	101	(3162)	69.1	CW
509	17.9	14.1	785	8.0	111	(3698)	69.1	CW

IG-22VM-SRY3714B-24 DC24V		起動電流 Starting current 322mA						
減速比 Reduction Ratio (1/i)	無負荷回転数 No-Load Speed min <sup>-1</sup>	定格回転数 Rated Speed min <sup>-1</sup>	定格トルク Rated Torque			起動トルク Starting Torque mNm	長さ(L) Length mm	回転方向 Direction of rotation
			mNm	kg·cm	oz·in			
4	932	698	14.7	0.15	2.08	(58.5)	53.5	CW
16	233	173	49.0	0.5	6.95	(190)	58.7	CW
19	196	145	58.8	0.6	8.34	(226)	58.7	CW
22	165	123	68.6	0.7	9.72	(270)	58.7	CW
64	58.3	43.4	157	1.6	22.2	(614)	63.9	CW
76	49.1	35.9	196	2.0	27.8	(729)	63.9	CW
90	41.3	30.6	226	2.3	32.0	(872)	63.9	CW
107	34.8	25.5	275	2.8	38.9	(1029)	63.9	CW
256	14.6	10.6	539	5.5	76.4	(1967)	69.1	CW
304	12.3	8.96	637	6.5	90.3	(2346)	69.1	CW
361	10.3	7.55	755	7.7	107	(2828)	69.1	CW
428	8.70	6.65	785	8.0	111	(3331)	69.1	CW
509	7.32	5.87	785	8.0	111	(3963)	69.1	CW

IG-22VM-SRY3715B-24 DC24V		起動電流 Starting current 1820mA						
減速比 Reduction Ratio (1/i)	無負荷回転数 No-Load Speed min <sup>-1</sup>	定格回転数 Rated Speed min <sup>-1</sup>	定格トルク Rated Torque			起動トルク Starting Torque mNm	長さ(L) Length mm	回転方向 Direction of rotation
			mNm	kg·cm	oz·in			
4	1930	1650	24.5	0.25	3.47	(169)	53.5	CW
16	482	410	83.4	0.85	11.8	(558)	58.7	CW
19	406	346	98.1	1.0	13.9	(664)	58.7	CW
22	342	291	118	1.2	16.7	(791)	58.7	CW
64	121	102	275	2.8	38.9	(1751)	63.9	CW
76	101	85.6	333	3.4	47.2	(2184)	63.9	CW
90	85.5	72.2	392	4.0	55.6	(2520)	63.9	CW
107	72.0	60.7	471	4.8	66.7	(3001)	63.9	CW
256	30.1	26.1	785	8.0	111	(5907)	69.1	CW
304	25.4	22.5	785	8.0	111	(6876)	69.1	CW
361	21.4	19.3	785	8.0	111	(8000)	69.1	CW
428	18.0	16.5	785	8.0	111	(9420)	69.1	CW
509	15.2	14.1	785	8.0	111	(10847)	69.1	CW

：標準品 Standard  
：特注品 Custom-made

1. 上記データは参考値です。  
2. 上記スペックは一例で、要望スペックにて承ります。

The above data is for reference only.  
The above specifications are an example and your specifications are welcomed.