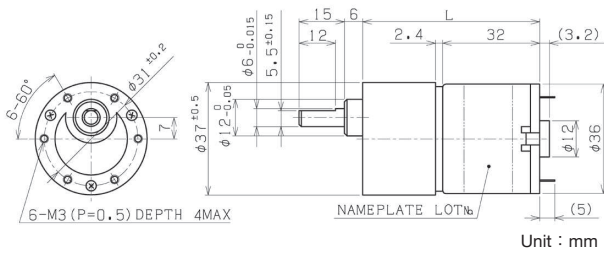


φ 37ギヤードモータ Gear Motor

コアードモータ Iron Core Motor

コアードモータ Iron Core Motor	FMA × ×	page22
スパーギヤヘッド Spur Gearhead	RB-35C	page75



RB-35CGM-FMA11-24・D DC24V		起動電流 Starting current 940mA		定格トルク Rated Torque			起動トルク Starting Torque	長さ(L) Length	回転方向 Direction of rotation
減速比 Reduction Ratio (1/i)	無負荷回転数 No-Load Speed min ⁻¹	定格回転数 Rated Speed min ⁻¹	mNm	kg·cm	oz·in	mNm	mm		
6	817	721	19.6	0.2	2.78	(167)	53.4	CW	
29	166	144	98.1	1.0	13.9	(740)	55.9	CCW	
35	138	119	108	1.1	15.3	(784)	58.4	CW	
49	100	85.8	157	1.6	22.2	(1106)	58.4	CW	
59	82.9	71.4	186	1.9	26.4	(1341)	58.4	CW	
80	60.9	52.4	255	2.6	36.1	(1827)	58.4	CW	
102	47.7	41.0	294	3.0	41.7	(2093)	60.9	CCW	
150	32.5	27.9	431	4.4	61.1	(3045)	60.9	CCW	
200	24.5	21.0	579	5.9	82.0	(4053)	60.9	CCW	
241	20.3	17.9	588	6.0	83.4	(4974)	60.9	CCW	
302	16.2	14.4	588	6.0	83.4	(5292)	63.4	CW	
494	9.91	9.26	588	6.0	83.4	(8965)	63.4	CW	
684	7.16	6.82	588	6.0	83.4	(12383)	63.4	CW	

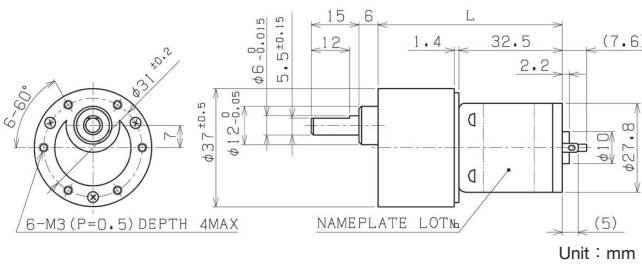
RB-35CGM-FMA08-12・D DC12V		起動電流 Starting current 2660mA		定格トルク Rated Torque			起動トルク Starting Torque	長さ(L) Length	回転方向 Direction of rotation
減速比 Reduction Ratio (1/i)	無負荷回転数 No-Load Speed min ⁻¹	定格回転数 Rated Speed min ⁻¹	mNm	kg·cm	oz·in	mNm	mm		
6	1000	904	19.6	0.2	2.78	(204)	53.4	CW	
29	203	181	98.1	1.0	13.9	(905)	55.9	CCW	
35	169	150	108	1.1	15.3	(961)	58.4	CW	
49	122	108	157	1.6	22.2	(1368)	58.4	CW	
59	102	90.0	186	1.9	26.4	(1581)	58.4	CW	
80	74.5	66.0	255	2.6	36.1	(2235)	58.4	CW	
102	58.5	51.7	294	3.0	41.7	(2529)	60.9	CCW	
150	39.8	35.2	431	4.4	61.1	(3729)	60.9	CCW	
200	30.0	26.5	579	5.9	82.0	(4963)	60.9	CCW	
241	24.8	22.4	588	6.0	83.4	(6076)	60.9	CCW	
302	19.8	18.1	588	6.0	83.4	(6848)	63.4	CW	
494	12.1	11.5	588	6.0	83.4	(11858)	63.4	CW	
684	8.77	8.43	588	6.0	83.4	(15167)	63.4	CW	

RB-35CGM-FMA12-24・D DC24V		起動電流 Starting current 1735mA		定格トルク Rated Torque			起動トルク Starting Torque	長さ(L) Length	回転方向 Direction of rotation
減速比 Reduction Ratio (1/i)	無負荷回転数 No-Load Speed min ⁻¹	定格回転数 Rated Speed min ⁻¹	mNm	kg·cm	oz·in	mNm	mm		
6	1220	1110	19.6	0.2	2.78	(217)	53.4	CW	
29	247	222	98.1	1.0	13.9	(969)	55.9	CCW	
35	205	184	108	1.1	15.3	(1054)	58.4	CW	
49	149	133	157	1.6	22.2	(1462)	58.4	CW	
59	124	110	186	1.9	26.4	(1647)	58.4	CW	
80	90.7	81.0	255	2.6	36.1	(2384)	58.4	CW	
102	71.1	63.4	294	3.0	41.7	(2715)	60.9	CCW	
150	48.4	43.2	431	4.4	61.1	(4012)	60.9	CCW	
200	36.5	32.5	579	5.9	82.0	(5283)	60.9	CCW	
241	30.2	27.4	588	6.0	83.4	(6342)	60.9	CCW	
302	24.1	22.1	588	6.0	83.4	(7085)	63.4	CW	
494	14.8	14.0	588	6.0	83.4	(10878)	63.4	CW	
684	10.7	10.3	588	6.0	83.4	(15729)	63.4	CW	

φ 37ギヤードモータ Gear Motor

コアードモータ Iron Core Motor

コアードモータ Iron Core Motor	NCB × ×	page22
スパーギヤヘッド Spur Gearhead	RB-35C	page75



RB-35CGM-NCB02-24・D DC24V		起動電流 Starting current 1670mA		定格トルク Rated Torque			起動トルク Starting Torque	長さ(L) Length	回転方向 Direction of rotation
減速比 Reduction Ratio (1/i)	無負荷回転数 No-Load Speed min ⁻¹	定格回転数 Rated Speed min ⁻¹	mNm	kg·cm	oz·in	mNm	mm		
6	1800	1400	29.4	0.30	4.17	(132)	52.9	CCW	
29	365	279	137	1.4	19.4	(581)	55.4	CW	
35	304	233	147	1.5	20.8	(629)	57.9	CCW	
49	220	168	206	2.1	29.2	(872)	57.9	CCW	
59	183	140	245	2.5	34.7	(1043)	57.9	CCW	
80	134	102	343	3.5	48.6	(1436)	57.9	CCW	
102	105	80.0	392	4.0	55.6	(1646)	60.4	CW	
150	71.6	54.7	569	5.8	80.6	(2411)	60.4	CW	
200	54.0	44.0	588	6.0	83.4	(3175)	60.4	CW	
241	44.7	37.9	588	6.0	83.4	(3865)	60.4	CW	
302	35.7	30.8	588	6.0	83.4	(4284)	62.9	CCW	
494	21.8	20.0	588	6.0	83.4	(7121)	62.9	CCW	
684	15.8	14.8	588	6.0	83.4	(9290)	62.9	CCW	

RB-35CGM-NCB01-24・D DC24V		起動電流 Starting current 1160mA		定格トルク Rated Torque			起動トルク Starting Torque	長さ(L) Length	回転方向 Direction of rotation
減速比 Reduction Ratio (1/i)	無負荷回転数 No-Load Speed min ⁻¹	定格回転数 Rated Speed min ⁻¹	mNm	kg·cm	oz·in	mNm	mm		
6	1330	1110	19.6	0.20	2.78	(118)	52.9	CCW	
29	271	226	88.3	0.90	12.5	(532)	55.4	CW	
35	225	187	98.1	1.0	13.9	(581)	57.9	CCW	
49	163	135	137	1.4	19.4	(798)	57.9	CCW	
59	135	112	167	1.7	23.6	(980)	57.9	CCW	
80	99.4	82.2	226	2.3	32.0	(1306)	57.9	CCW	
102	78.0	64.6	255	2.6	36.1	(1484)	60.4	CW	
150	53.1	44.0	373	3.8	52.8	(2177)	60.4	CW	
200	40.0	33.1	500	5.1	70.8	(2899)	60.4	CW	
241	33.1	27.6	588	6.0	83.4	(3539)	60.4	CW	
302	26.4	22.5	588	6.0	83.4	(3980)	62.9	CCW	
494	16.2	14.7	588	6.0	83.4	(6350)	62.9	CCW	
684	11.7	10.9	588	6.0	83.4	(8600)	62.9	CCW	

：標準品 Standard
：特注品 Custom-made

1. 上記データは参考値です。
2. 上記スペックは一例で、要望スペックにて承ります。

The above data is for reference only.
The above specifications are an example and your specifications are welcomed.